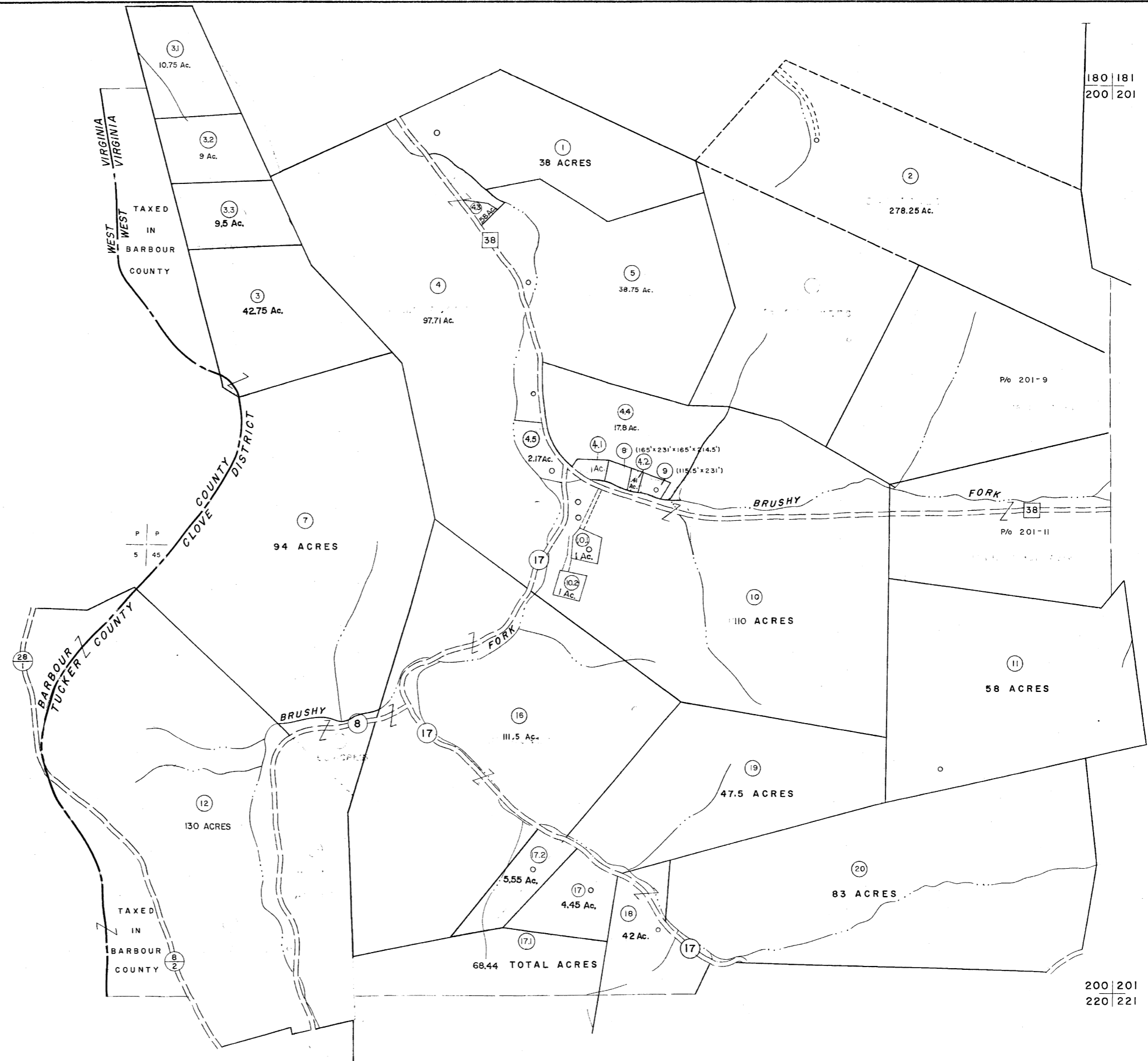


180
200

180 | 181
200 | 201



200
220

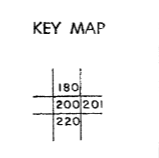
200 | 201
220 | 221

For Tax Purposes Only

Prepared by
MICHAEL BAKER, JR., INC.
Consulting Engineers
Rochester, Pennsylvania

Legend	
Property line	—————
Edge of pavement or roadway	—————
Corporation line	—————
District line	—————
County line	—————
Original lot line	-----
Dead lot number	(D)
Parcel or index number	(P)
Improvement	o
Railroad	—+—+—+—

Revisions			
1	6-3-64	9	SLS INC. - DDC 5/97
2	6-3-75	10	SLS INC. 2/19/98 DSW
3	1/27/99	11	SLS INC. 1/27/99 DSW
4	2/7/02	12	ESI 2/7/02 REK
5	OGIS 12/30/90 DSH	13	H&S 2/22/04
6	OGIS 3-19-92 TL	14	3/21/05 S&H
7	OGIS 2-95 HD	15	6-22-08 4.5
8	O.G.I.S 4-1-96 J.E.B	16	



TUCKER COUNTY
STATE OF WEST VIRGINIA
Office of Assessor

DISTRICT	CLOVER
SHEET NO:	200
Date, Aerial Photography: Nov., 1961	Date, Map: Dec., 1962
Photo No:	Scale: 1" = 400'