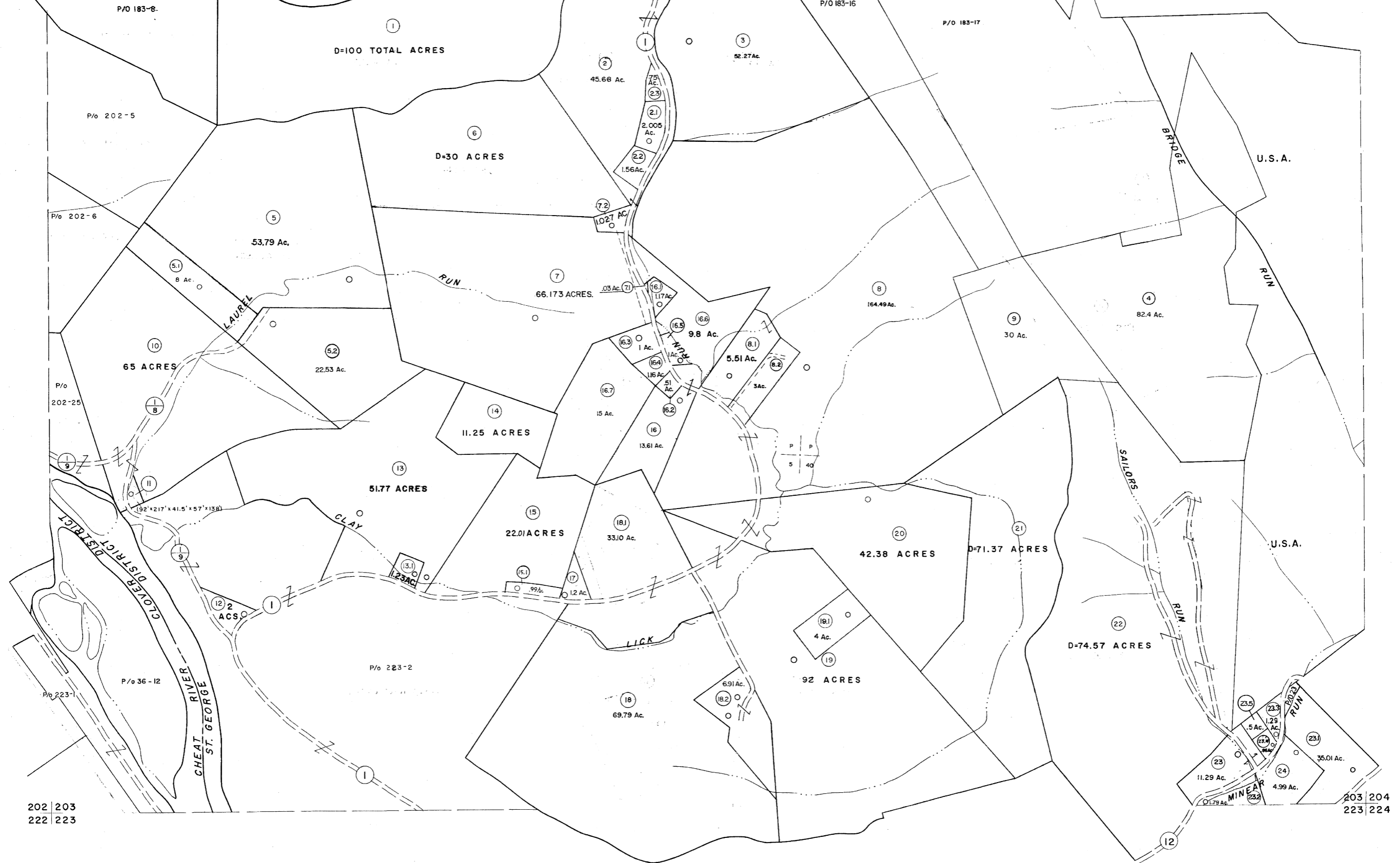


182 | 183  
202 | 203

183 | 184  
203 | 204



202 | 203  
222 | 223

203 | 204  
223 | 224

For Tax Purposes Only

Prepared by  
MICHAEL BAKER, JR., INC.  
Consulting Engineers  
Rochester, Pennsylvania

Legend	
Property line	Original lot line
Edge of pavement or roadway	Deed lot number
Corporation line	Parcel or index number
District line	Improvement
County line	Railroad

Revisions								
1	11/20/78	DG	9	OGIS 3-19-91	TL	17	SLS INC. 3/1/00	JWM
2	1/21/83	L.E.S.	10	OGIS 1/25/93	DSH	18	ESI 2/7/02	REK
3	7-21-84	L.E.S.	11	OGIS 12/11/93	SAJ	19	ESI 2/20/03	REK
4	Revised to 7-1-85		12	OGIS 2-95	HD	20	HBS 2/22/04	
5	REV. TO 7-1-86	NCS	13	O.G.I.S 4-1-96	J.E.B	21	3/28/06	S&H
6	Revised to 7-1-87		14	SLS INC. - DDC	5/97	22	3/24/07	S&H
7	REV. TO 3-1-89	R.F.B.	15	SLS INC. 2/23/98	JWM	23	6-22-08	H&S
8	OGIS 12/31/90	DSH	16	SLS INC. 1/27/99	DSW	24		

KEY MAP

**TUCKER COUNTY**  
STATE OF WEST VIRGINIA  
Office of Assessor

DISTRICT  
**CLOVER-ST. GEORGE**

SHEET NO: 203

Date, Aerial Photography: Nov, 1961  
Date, Map: Dec, 1962  
Photo No: 223  
Scale: 1" = 400'