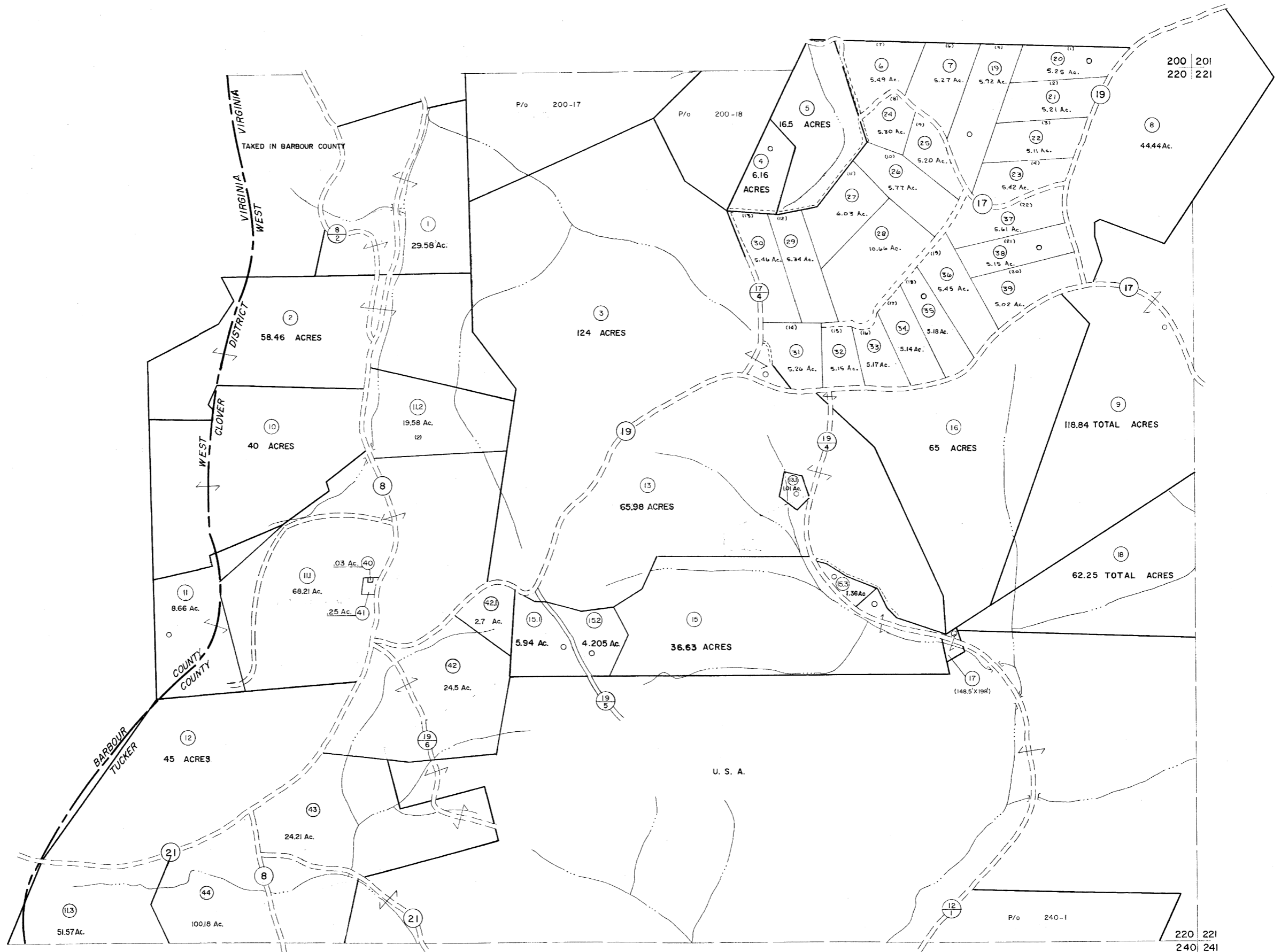


200
220

220
240



For Tax Purposes Only

Prepared by
MICHAEL BAKER, JR., INC.
Consulting Engineers
Rochester, Pennsylvania

Legend

Property line	—————	Original lot line	—————
Edge of pavement or roadway	—————	Deed lot number	(NS)
Corporation line	—————	Parcel or index number	(99)
District line	—————	Improvement	○
County line	—————	Railroad	——+——

Revisions

No.	Date	By	Description
1	6-3-75	JC	OGIS 4-95
2			SLS INC. - DDC 5/97
3			SLS INC. 2/23/98 JWM
4	REV. TO 7-1-86	NCS	SLS INC. 1/27/99 DSW
5	Rev. to 3-1-89	REB	ES1 1/31/01 REK
6	OGIS 3-19-92	YL	HBS 2/22/04
7	OGIS 1/25/93	DSH	6-22-08
8	OGIS 12/11/93	SAJ	6-21-09

KEY MAP



TUCKER COUNTY
STATE OF WEST VIRGINIA
Office of Assessor

DISTRICT

CLOVER

SHEET NO: 220

Date, Aerial Photography: November, 1961 Date, Map: Dec. 1962
Photo No: Scale: 1" = 400'