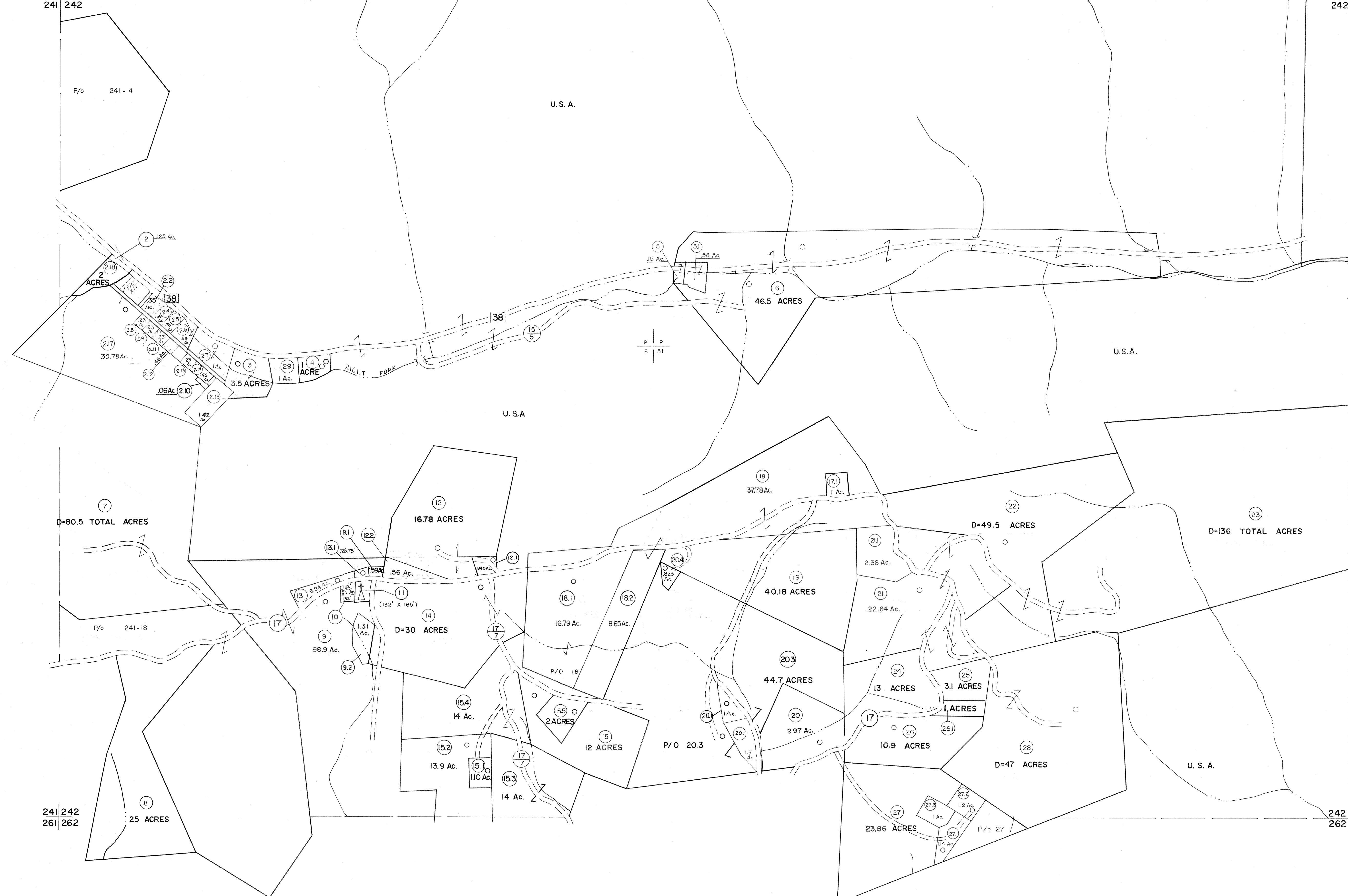


221|222
241|242

222|223
242|243



For Tax Purposes Only
 Prepared by
MICHAEL BAKER, JR., INC.
 Consulting Engineers
 Rochester, Pennsylvania

Legend	
Property line	—————
Edge of pavement or roadway	—————
Corporation line	—————
District line	—————
County line	—————
Original lot line	-----
Deed lot number	(15)
Parcel or index number	(2)
Improvement	○
Railroad	—+—+—+—

Revisions	
1	JUNE 25 PAM 9 OGIS 3-19-92 TL 17 ES1 2/8/02 REK
2	11-21-78 DG 10 OGIS 1/25/93 DSH 18 H&S 2/22/04
3	Revised to 7-1-88 11 OGIS 12/11/93 SAJ 19 3/24/07 S&H
4	7-1-84 L.E.S. 12 O.G.I.S. 4-1-96 J.E.B. 20
5	Revised to 7-1-85 13 SLS INC. - DDC 5/97 21
6	REV. TO 7-1-86 NCS 14 SLS INC. - DDC 5/97 21
7	REV. TO 3-1-89 R.E.B. 15 SLS INC. 2/23/98 JWM 22
8	OGIS 12/31/90 DSH 16 ES1 1/31/01 REK 24

KEY MAP

TUCKER COUNTY
 STATE OF WEST VIRGINIA
 Office of Assessor

DISTRICT **CLOVER**
SHEET NO: 242
 Date, Aerial Photography: November, 1961 Date, Map: Dec., 1962
 Photo No: Scale: 1" = 400'