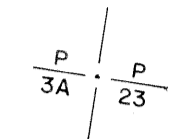
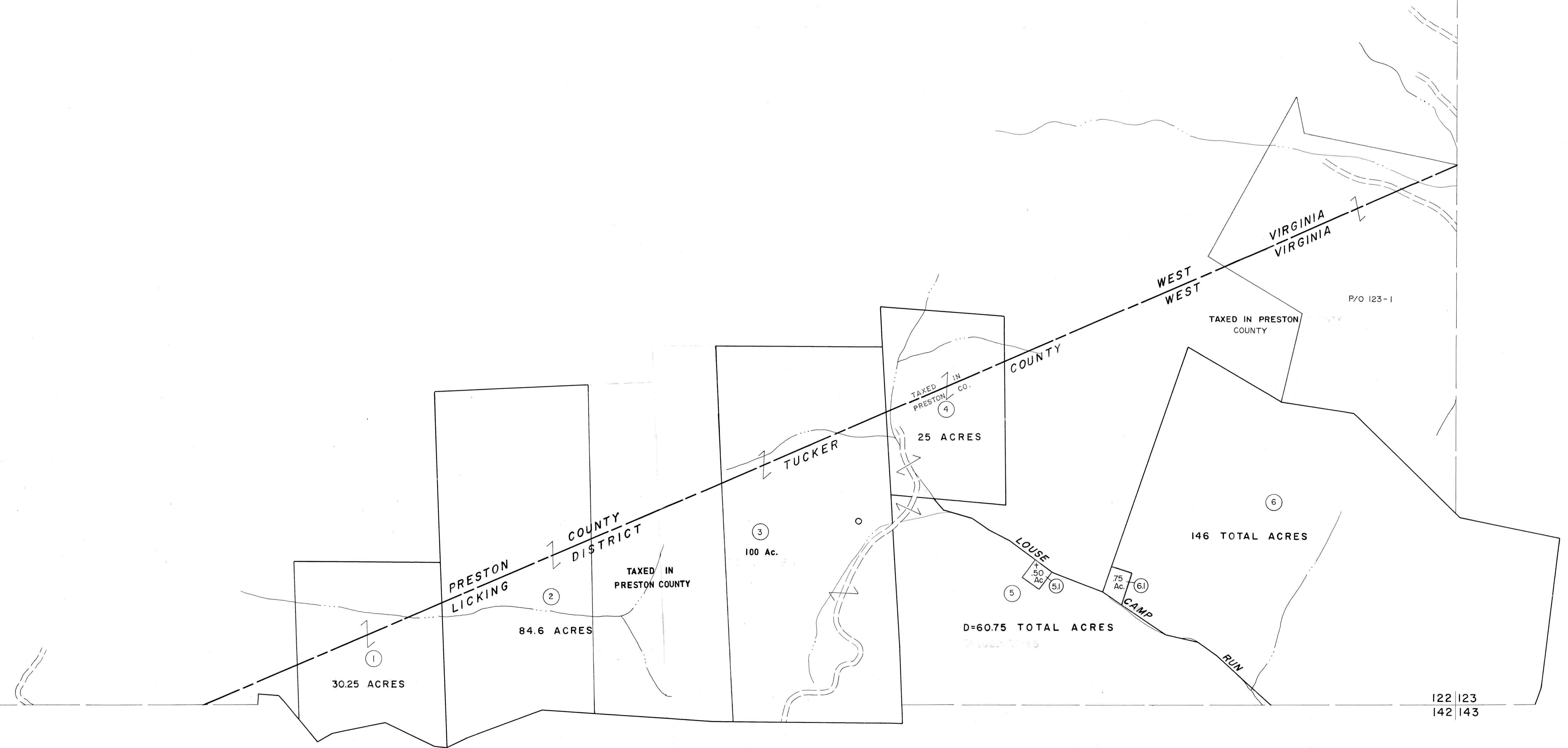


122 123



122
141 142

122 123
142 143



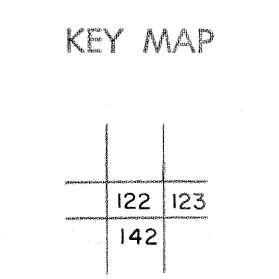
For Tax Purposes Only
Prepared by
MICHAEL BAKER, JR., INC.
Consulting Engineers
Rochester, Pennsylvania

Legend

Property line	---	Original lot line	---
Edge of pavement or roadway	---	Deed lot number	(15)
Corporation line	---	Parcel or index number	(99)
District line	---	Improvement	o
County line	---	Railroad	---

Revisions

1	Revised to 7-1-88	9	17
2	OGIS 12/29/90 DSH	10	18
3	OGIS 3-19-92 TL	11	19
4	OGIS 1/23/93 DSH	12	20
5	OGIS 12/9/93 SAJ	13	21
6	O.G.I.S 4-1-96 J.E.B	14	22
7		15	23
8		16	24



TUCKER COUNTY
STATE OF WEST VIRGINIA
Office of Assessor

DISTRICT **LICKING**
SHEET NO: 122
Date, Aerial Photography: November, 1961 Date, Map: Dec, 1962
Photo No: Scale: 1"=400'