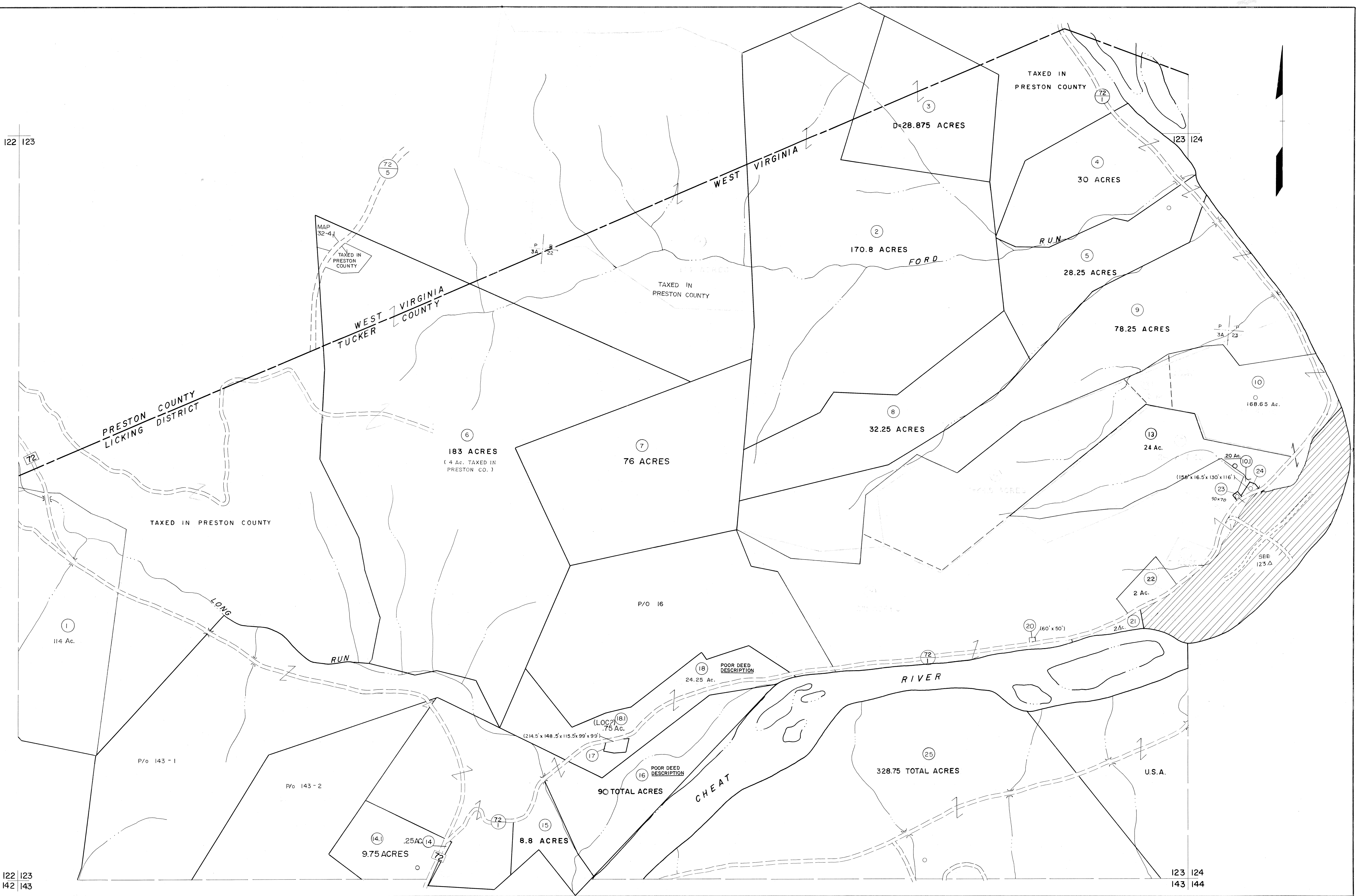
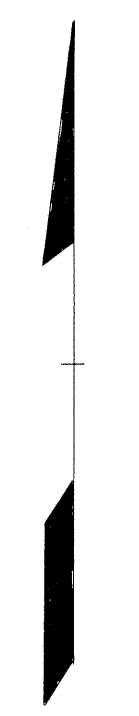


122 123

122 123
142 143

123 124

123 124
143 144



For Tax Purposes Only

Prepared by
MICHAEL BAKER, JR., INC.
Consulting Engineers
Rochester, Pennsylvania

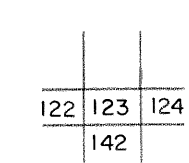
Legend

Property line	—	Original lot line	—
Edge of pavement or roadway	—	Deed lot number	(15)
Corporation line	—	Parcel or index number	(99)
District line	—	Improvement	o
County line	—	Railroad	—

Revisions

1	6-9-75	J.C.	9	OGIS	1/23/92	DSH	17
2	11/14/78	DG	10	O.G.I.S.	4-1-96	J.E.B.	18
3	Revised 7-1-88	DS	11	SLS INC.	- DDC 5/97		19
4	REV. TO 7-1-86	NCS	12	SLS INC.	2/19/98	DSW	20
5	REV. TO 3-1-89	NCS	13				21
6	OGIS	12/29/90	DSH	14			22
7	OGIS	3-19-92	TL	15			23
8				16			24

KEY MAP



TUCKER COUNTY

STATE OF WEST VIRGINIA

Office of Assessor

DISTRICT

LICKING

SHEET NO: 123

Date, Aerial Photography: November, 1961 Date, Map: Dec., 1962
Photo No: Scale: 1" = 400'