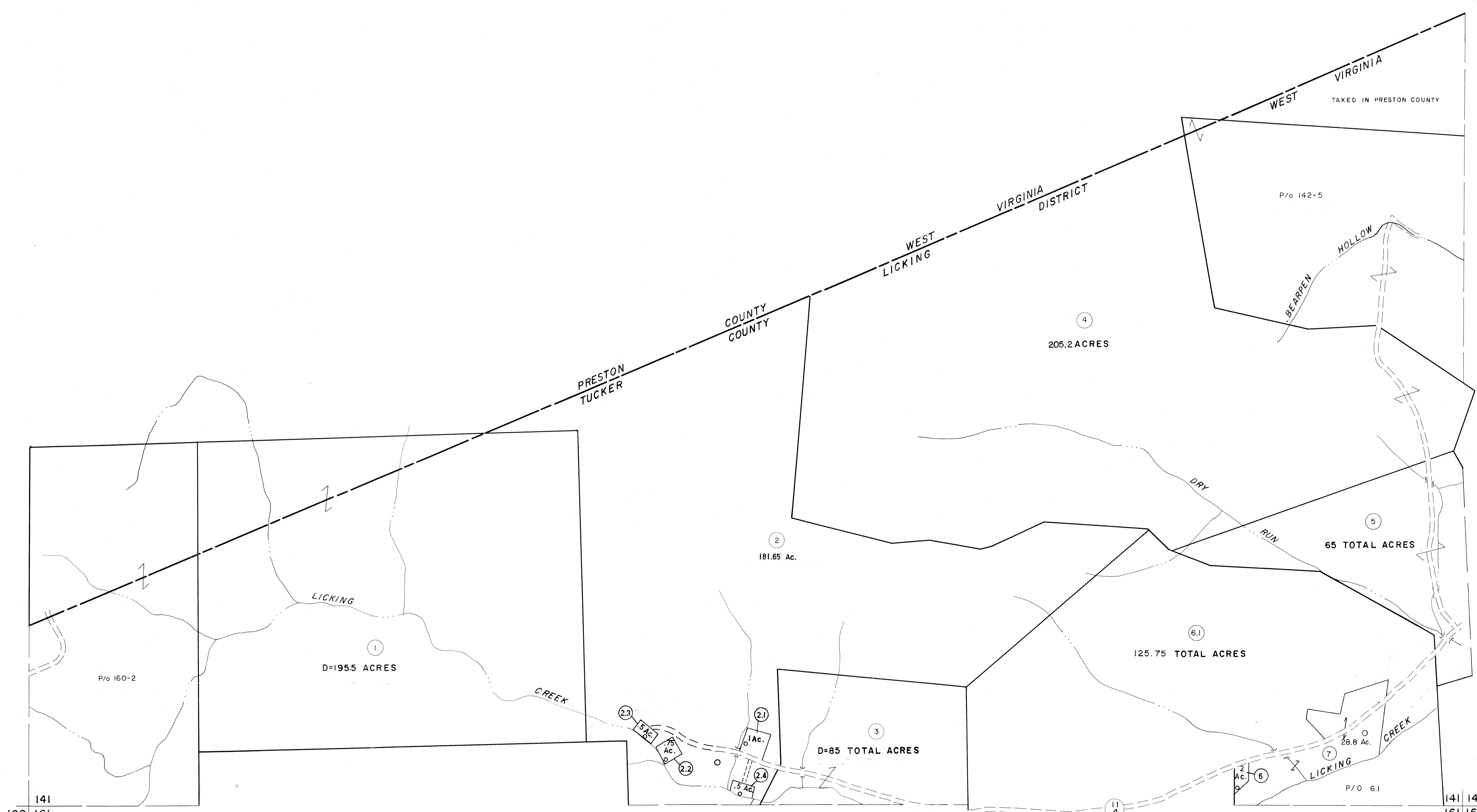


141

122  
141 142

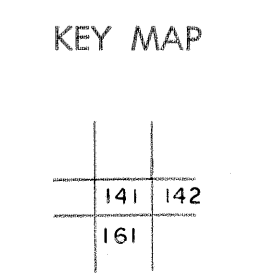


For Tax Purposes Only

Prepared by  
**MICHAEL BAKER, JR., INC.**  
 Consulting Engineers  
 Rochester, Pennsylvania

| Legend                      |                        |
|-----------------------------|------------------------|
| Property line               | Original lot line      |
| Edge of pavement or roadway | Deed lot number        |
| Corporation line            | Parcel or index number |
| District line               | Improvement            |
| County line                 | Railroad               |

| Revisions |                    |
|-----------|--------------------|
| 1         | Revised to 7-1-83  |
| 2         | 7-1-84 L.E.S.      |
| 3         | REV. TO 7-1-86 NCS |
| 4         | OGIS 12/29/90 DSH  |
| 5         | OGIS 3-19-92 TL    |
| 6         | OGIS 4-95 HD       |
| 7         |                    |
| 8         |                    |



**TUCKER COUNTY**  
 STATE OF WEST VIRGINIA  
 Office of Assessor

|                           |                |
|---------------------------|----------------|
| DISTRICT                  | <b>LICKING</b> |
| SHEET NO:                 | 141            |
| Date, Aerial Photography: | November, 1961 |
| Date, Map:                | Dec., 1962     |
| Photo No:                 |                |
| Scale:                    | 1" = 400'      |