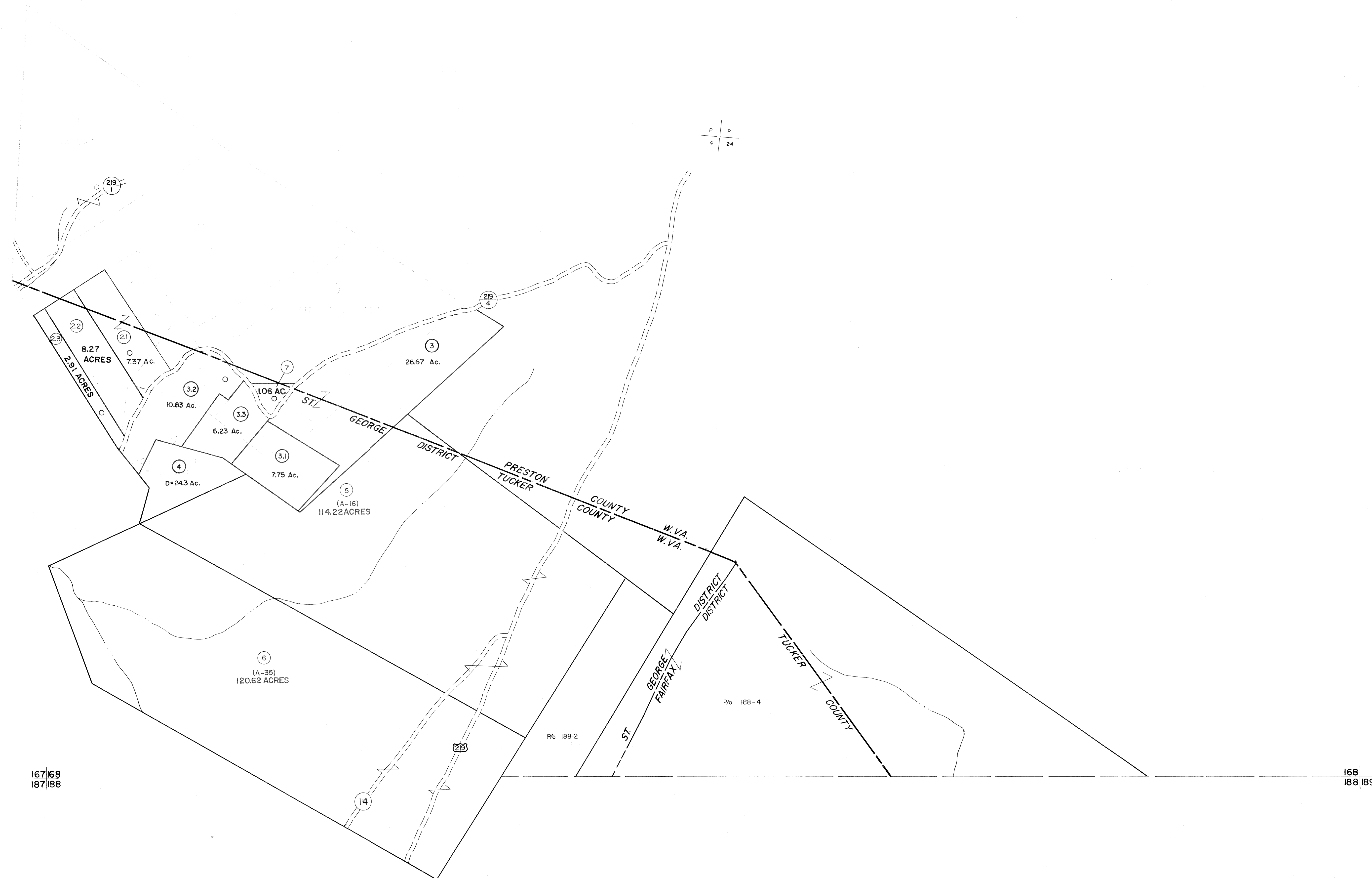


147
167|168

168



167|168
187|188

168
188|189

For Tax Purposes Only

Prepared by
MICHAEL BAKER, JR., INC.
Consulting Engineers
Rochester, Pennsylvania

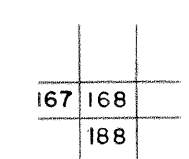
Legend

Property line	———	Original lot line	-----
Edge of pavement or roadway	———	Deed lot number	(15)
Corporation line	-----	Parcel or index number	(29)
District line	-----	Improvement	o
County line	-----	Railroad	+

Revisions

No.	Date	By	Revised To	No.	Date	By
1	11/17/78	D.G.	3/26/07	9		S&H
2	REVISED TO 7-1-83			10		
3	REV. TO 7-1-86	NCS		11		
4	REV. TO 3-1-89	NCS		12		
5	OGIS 12/30/90	DSH		13		
6	OGIS 3-19-92	TL		14		
7	OGIS 1/24/93	DSH		15		
8	O.G.I.S. 4-1-98	J.E.B.		16		

KEY MAP



TUCKER COUNTY
STATE OF WEST VIRGINIA
Office of Assessor

DISTRICT **ST. GEORGE FAIRFAX**

SHEET NO: 168

Date, Aerial Photography: November, 1961 Date, Map: Dec., 1962
Photo No: Scale: 1" = 400'