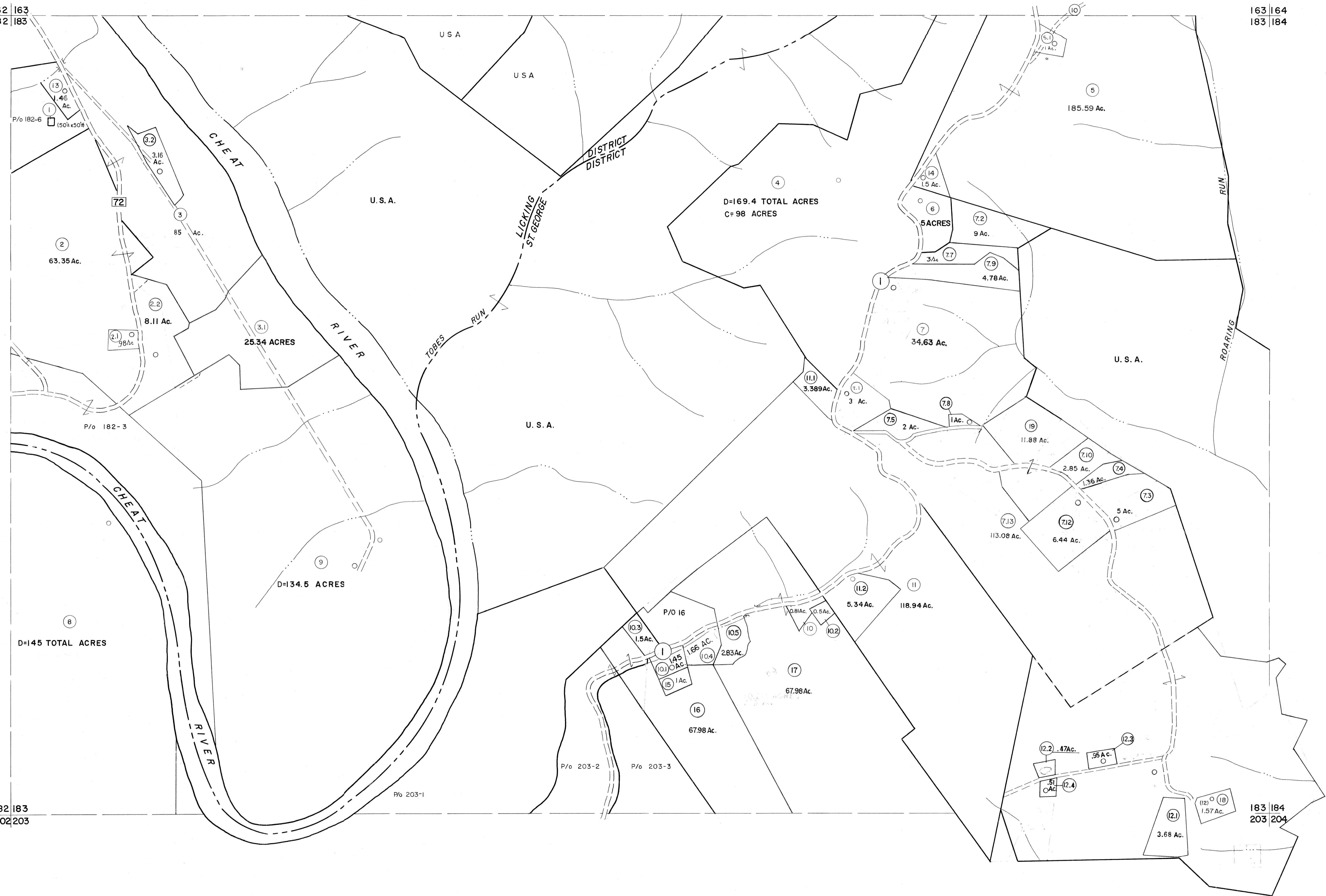


162 | 163  
182 | 183

163 | 164  
183 | 184



182 | 183  
202 | 203

183 | 184  
203 | 204

**For Tax Purposes Only**

Prepared by  
**MICHAEL BAKER, JR., INC.**  
Consulting Engineers  
Rochester, Pennsylvania

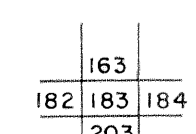
**Legend**

Property line	—	Original lot line	---
Edge of pavement or roadway	—	Deed lot number	(15)
Corporation line	—	Parcel or index number	(22)
District line	---	Improvement	○
County line	---	Railroad	—

**Revisions**

1	6-6-75	JC	9	OGIS	3-19-92	TL	17
2	11/20/78	DG	10	OGIS	1/24/93	DSH	18
3	7-1-83	C.R.	11	OGIS	12/11/93	SAJ	19
4	7-1-84	L.E.S.	12	SLS INC.	2/19/98	DSW	20
5	REV TO 7-1-86	NCS	13	HAS	2/22/04		21
6	Revised 11-1-87	DS	14		3/21/05	S&H	22
7	REV TO 3-1-89	NCS	15		3/24/07	S&H	23
8	OGIS	12/30/90	DSH	16			24

**KEY MAP**



**TUCKER COUNTY**  
STATE OF WEST VIRGINIA  
Office of Assessor

DISTRICT **LICKING ST. GEORGE**

**SHEET NO: 183**

Date, Aerial Photography: Nov., 1961 Date, Map: Dec., 1962  
Photo No: Scale: 1" = 400'