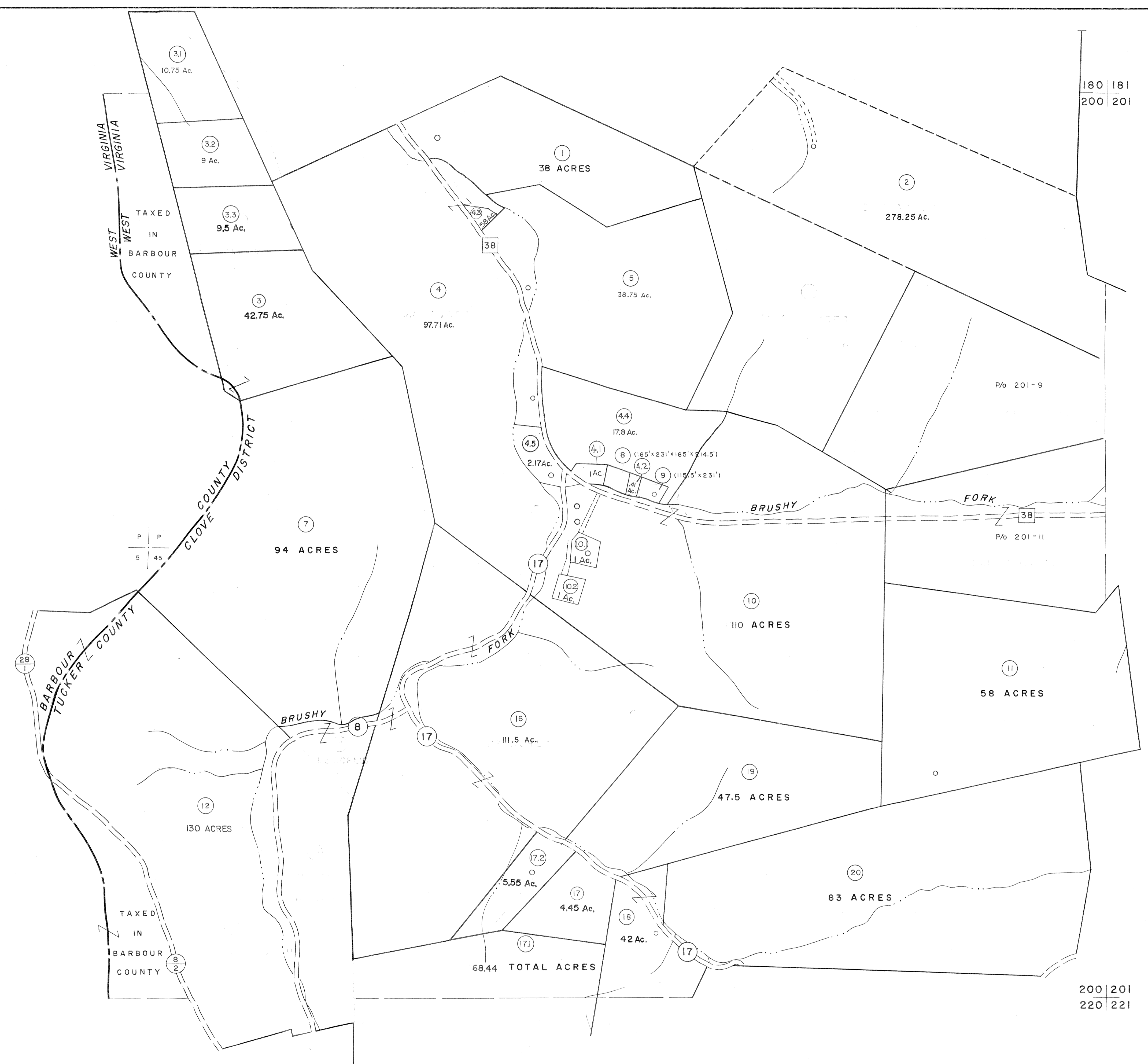


180
200

180 181
200 201



200
220

200 201
220 221

For Tax Purposes Only

Prepared by
MICHAEL BAKER, JR., INC.
Consulting Engineers
Rochester, Pennsylvania

| Legend | |
|-----------------------------|------------------------|
| Property line | Original lot line |
| Edge of pavement or roadway | Deed lot number |
| Corporation line | Parcel or index number |
| District line | Improvement |
| County line | Railroad |

| Revisions | | | |
|-----------|----------------------|----|----------------------|
| 1 | 6-3-64 | 9 | SLS INC. - DDC 5/97 |
| 2 | 6-3-75 | 10 | SLS INC. 2/19/98 DSW |
| 3 | 12/1/83 | 11 | SLS INC. 1/27/99 DSW |
| 4 | 12/1/85 | 12 | ESI 2/7/02 REK |
| 5 | OGIS 12/30/90 DSH | 13 | H&S 2/22/04 |
| 6 | OGIS 3-19-92 TL | 14 | 3/21/05 S&H |
| 7 | OGIS 2-95 HD | 15 | |
| 8 | O.G.I.S 4-1-96 J.E.B | 16 | |

KEY MAP

TUCKER COUNTY
STATE OF WEST VIRGINIA
Office of Assessor

DISTRICT
CLOVER

SHEET NO: **200**

Date, Aerial Photography: Nov, 1961 Date, Map: Dec, 1962
Photo No: Scale: 1"=400'