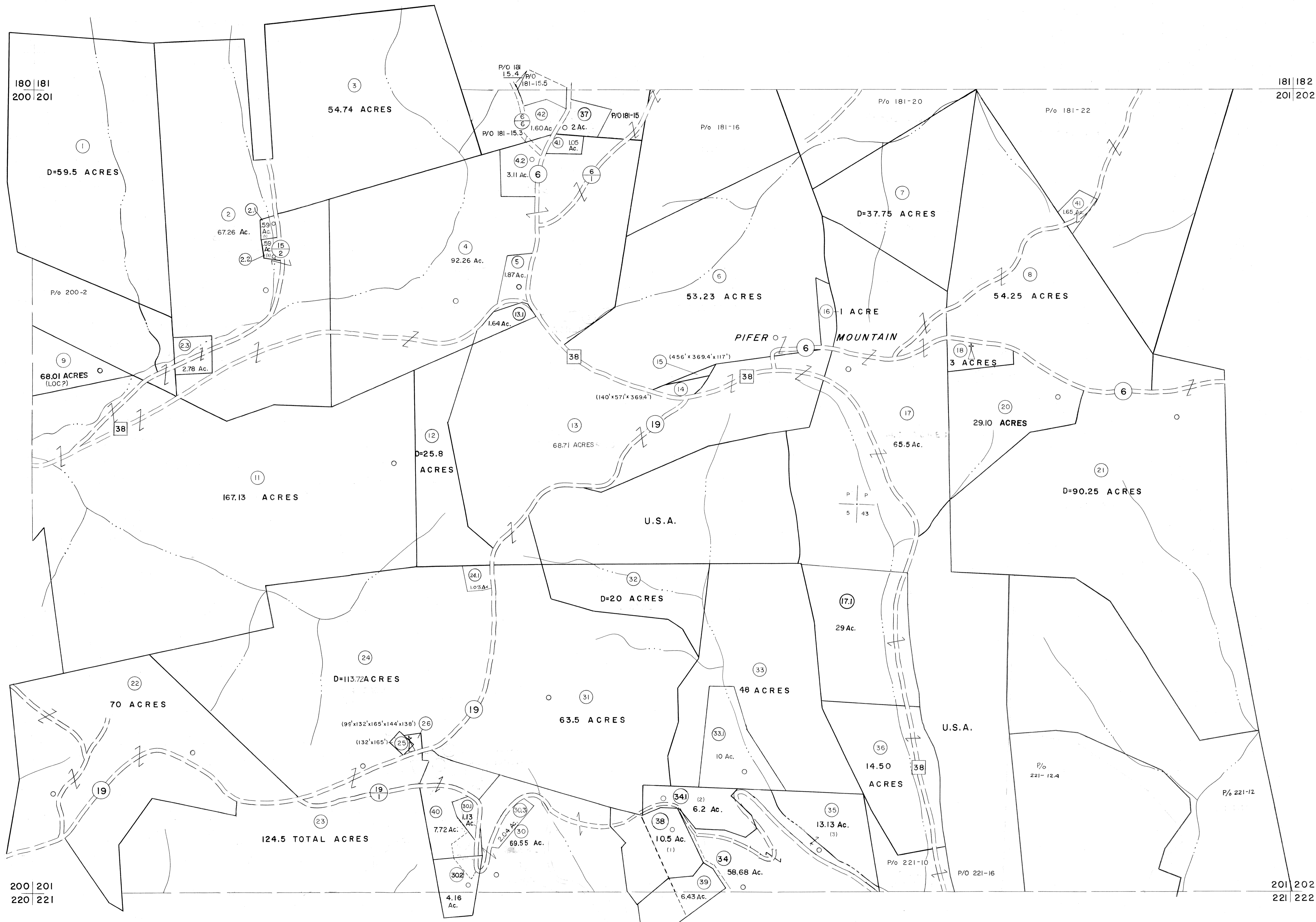


180 | 181
200 | 201

181 | 182
201 | 202



For Tax Purposes Only

Prepared by
MICHAEL BAKER, JR., INC.
Consulting Engineers
Rochester, Pennsylvania

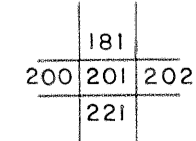
Legend

Property line	—	Original lot line	- - - - -
Edge of pavement or roadway	—	Deed lot number	(13)
Corporation line	—	Parcel or index number	(99)
District line	—	Improvement	o
County line	—	Railroad	—

Revisions

1	6-3-67	9	OGIS 1/25/93	DSH	17	3/21/05	SBH
2	6-3-75	10	OGIS 12/11/93	SAJ	18	3/24/07	SBH
3	11-20-78	11	OGIS 2-95	HD	19		
4	10-1-88	12	SLS INC. - DDC 5/97		20		
5	10-1-88	13	SLS INC. 2/23/98	JWM	21		
6	REV. TO 7-1-86	14	SLS INC. 1/27/99	DSW	22		
7	OGIS 12/31/90	15	ESI 1/31/01	REK	23		
8	OGIS 3-19-92	16	H&S 2/22/04		24		

KEY MAP



TUCKER COUNTY
STATE OF WEST VIRGINIA
Office of Assessor

DISTRICT

CLOVER

SHEET NO: 201

Date, Aerial Photography: Nov, 1961 Date, Map: Dec, 1962
Photo No: Scale: 1" = 400'