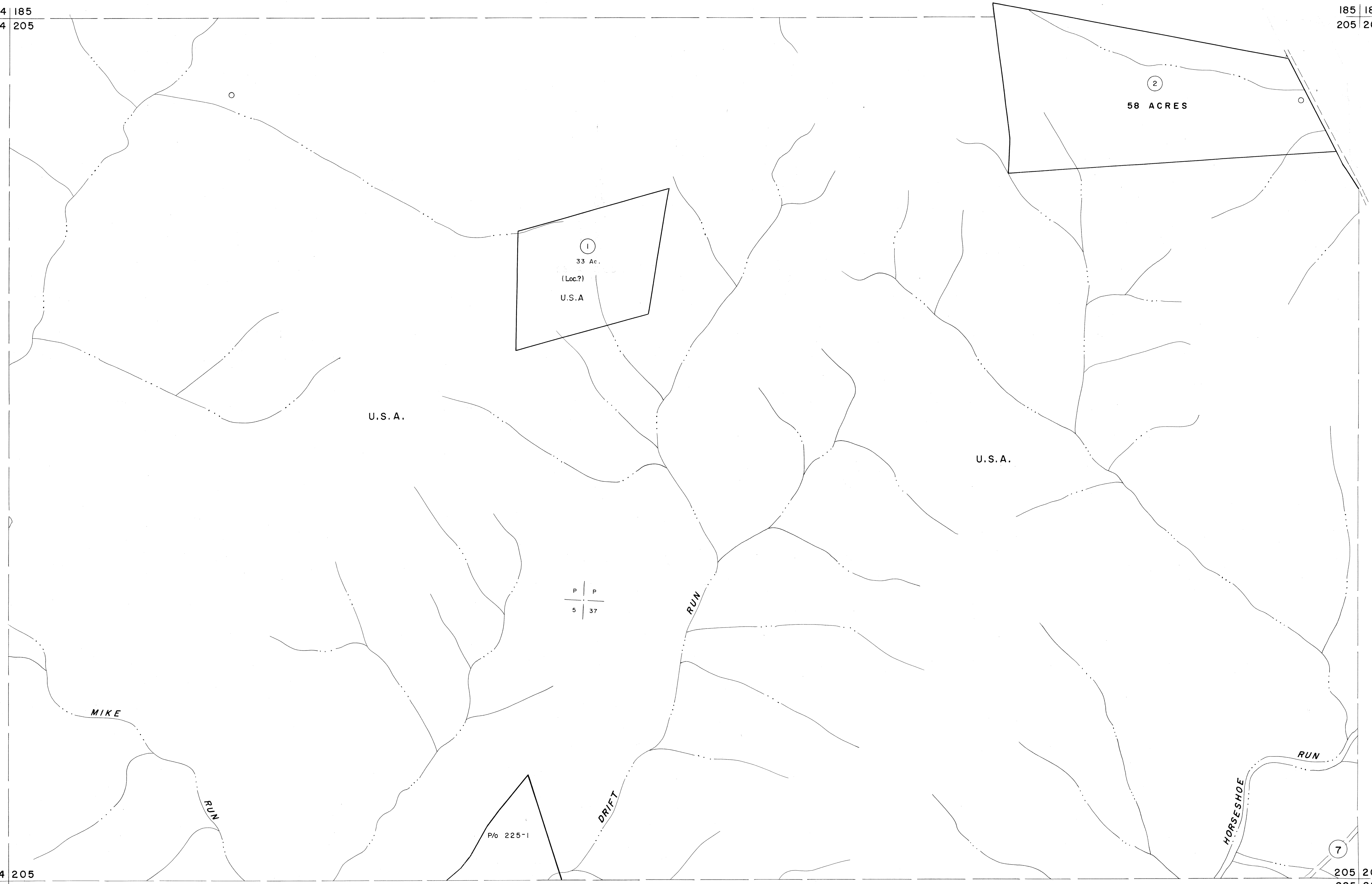


184 185
204 205

185 186
205 206

204 205
224 225

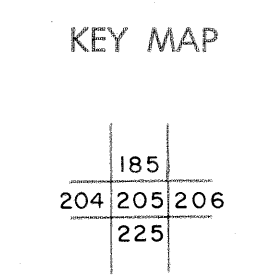
205 206
225 226



For Tax Purposes Only
 Prepared by
MICHAEL BAKER, JR., INC.
 Consulting Engineers
 Rochester, Pennsylvania

| Legend | |
|-----------------------------|------------------------|
| Property line | Original lot line |
| Edge of pavement or roadway | Deed lot number |
| Corporation line | Parcel or index number |
| District line | Improvement |
| County line | Railroad |

| Revisions | | | |
|-----------|-----------|----------|----------|
| 1 | July 1983 | 7/82 | 9 |
| 2 | OGIS | 12/31/90 | DSH 10 |
| 3 | OGIS | 3-19-92 | TL 11 |
| 4 | O.G.I.S | 4-1-96 | J.E.B 12 |
| 5 | | | 13 |
| 6 | | | 14 |
| 7 | | | 15 |
| 8 | | | 16 |
| | | | 17 |
| | | | 18 |
| | | | 19 |
| | | | 20 |
| | | | 21 |
| | | | 22 |
| | | | 23 |
| | | | 24 |



TUCKER COUNTY
 STATE OF WEST VIRGINIA
 Office of Assessor

DISTRICT
ST. GEORGE
 SHEET NO: **205**
 Date, Aerial Photography: Nov, 1961 Date, Map: Dec, 1962
 Photo No: Scale: 1" = 400'