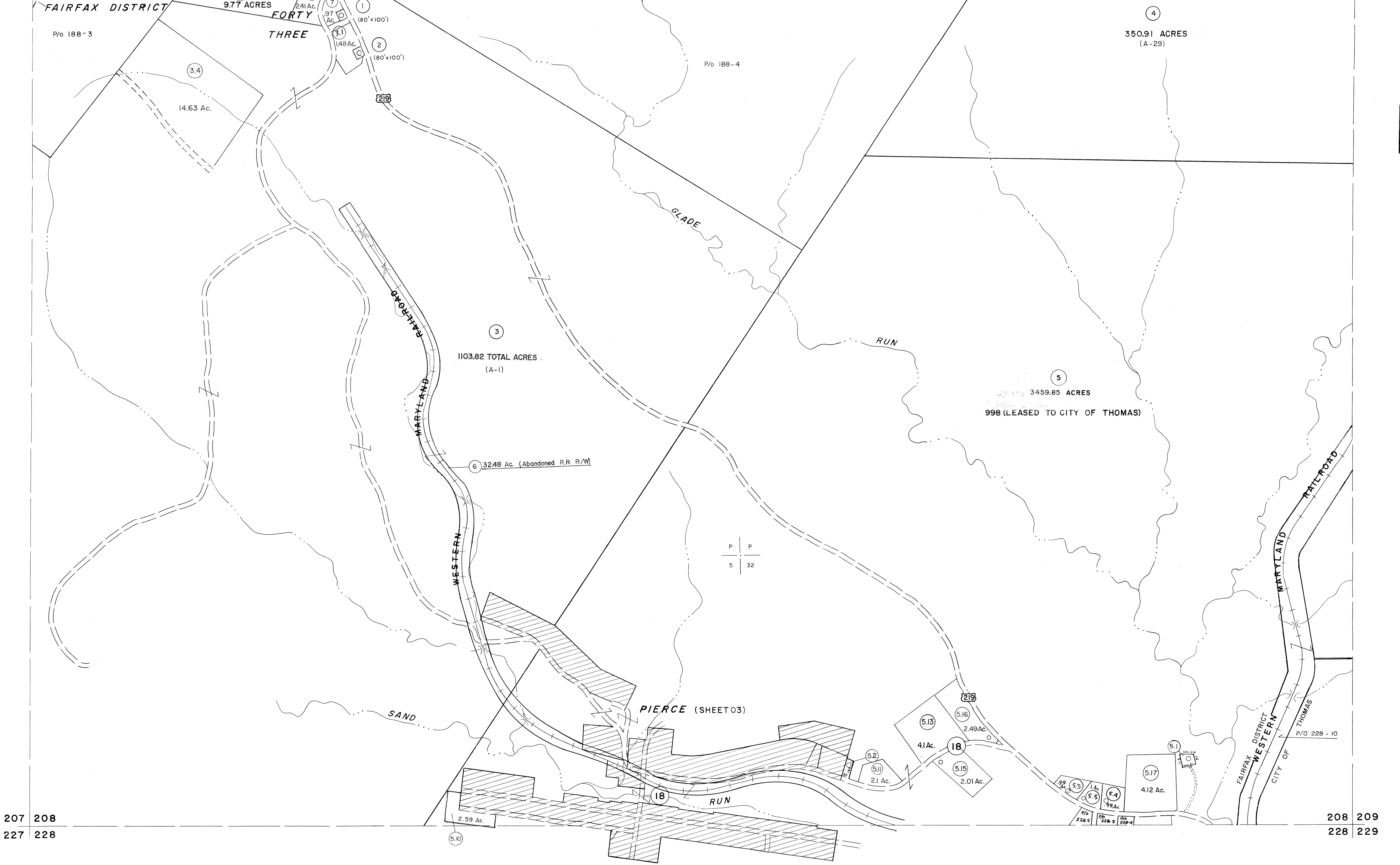


187 188  
207 208

188 189  
208 209



207 208  
227 228

208 209  
228 229

For Tax Purposes Only  
Prepared by  
**MICHAEL BAKER, JR., INC.**  
Consulting Engineers  
Rochester, Pennsylvania

Legend	
Property line	———
Edge of pavement or roadway	———
Corporation line	———
District line	———
County line	———
Original lot line	———
Deed lot number	(15)
Parcel or index number	(99)
Improvement	○
Railroad	———

Revisions					
1	JUNE 75	P.A.V.	9	SLS INC. 2/23/98	JWM 17 3/28/06 S & H
2	11/20/78	D.G.	10	SLS INC. 1/27/99	DSW 18
3	REV. TO 7-1-86	NCS	11	SLS INC. 3/1/00	JWM 19
4	REV. TO 3-1-89	RE.B.	12	ESI 1/31/01	REK 20
5	OGIS 3-19-92	TL	13	ESI 2/7/02	REK 21
6	OGIS 2-95	HD	14	ESI 2/20/03	REK 22
7	O.G.I.S 4-1-96	J.E.B.	15	HBS 2/22/04	
8	SLS INC. - DDC 5/97		16	S & H 3/21/05	24

KEY MAP  
188  
207 208 209  
228

**TUCKER COUNTY**  
STATE OF WEST VIRGINIA  
Office of Assessor

DISTRICT **FAIRFAX**  
SHEET NO: **208**  
Date, Aerial Photography: Nov., 1961 Date, Map: Dec, 1962  
Photo No: Scale: 1" = 400'