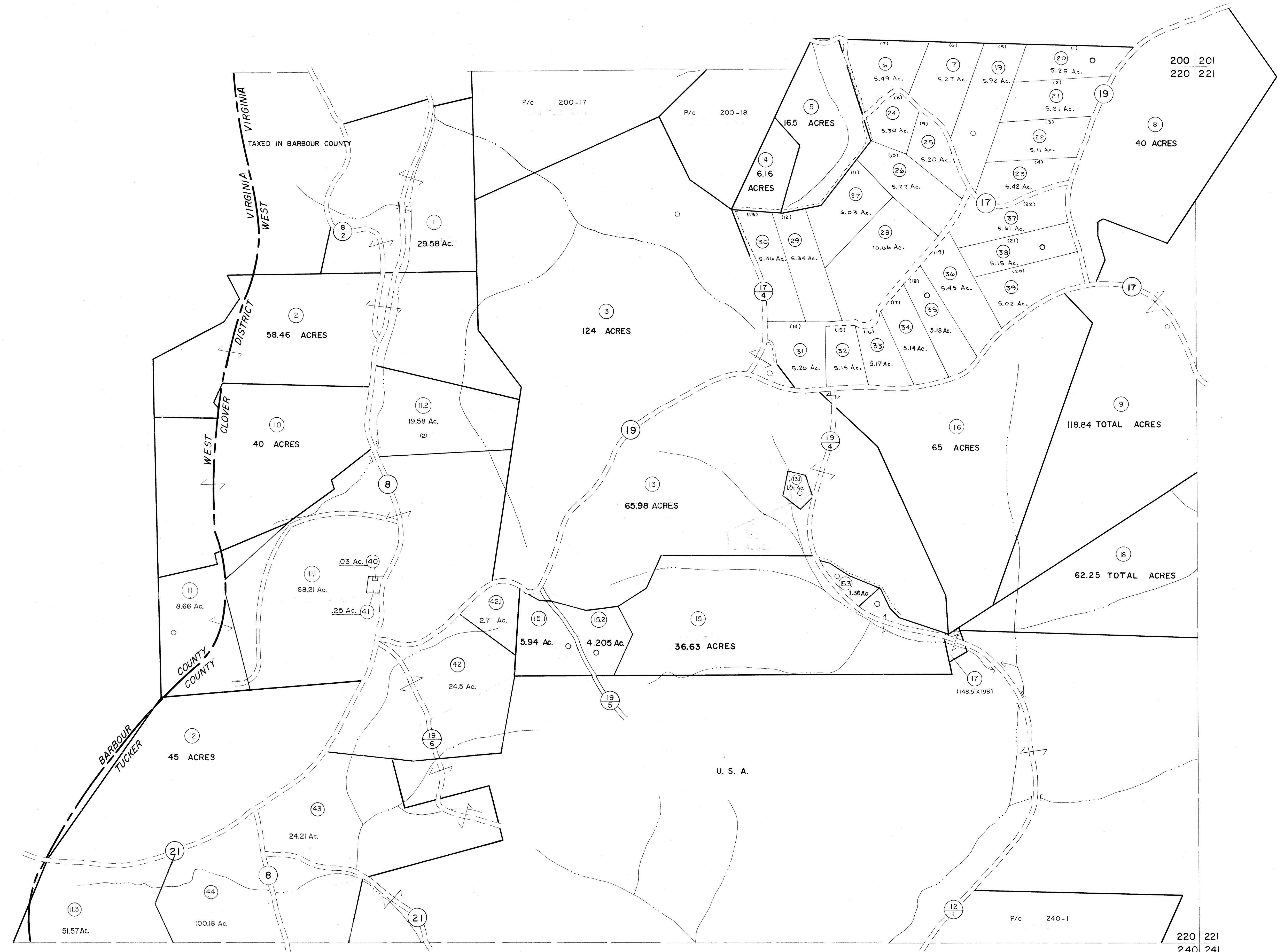


200  
220

220  
240



For Tax Purposes Only  
 Prepared by  
**MICHAEL BAKER, JR., INC.**  
 Consulting Engineers  
 Rochester, Pennsylvania

Legend	
Property line	Original lot line
Edge of pavement or roadway	Deed lot number
Corporation line	Parcel or index number
District line	Improvement
County line	Railroad

Revisions	
1 6-3-75 JC	9 OGIS 4-95 HD 17
2 11-1-83 JC	10 SLS INC. - DDC 5/97 18
3 7-1-85 JC	11 SLS INC. 2/23/98 JWM 19
4 REV. TO 7-1-86 NCS	12 SLS INC. 1/27/99 DSW 20
5 Rev. to 3-1-89 R.E.B.	13 ESI 1/31/01 REK 21
6 OGIS 3-19-92 T.L.	14 HBS 2/22/04 22
7 OGIS 1/25/93 DSH	15 23
8 OGIS 12/11/93 SAJ	16 24

KEY MAP

**TUCKER COUNTY**  
 STATE OF WEST VIRGINIA  
 Office of Assessor

DISTRICT  
**CLOVER**  
 SHEET NO: 220  
 Date, Aerial Photography: November, 1961 Date, Map: Dec., 1962  
 Photo No: Scale: 1" = 400'