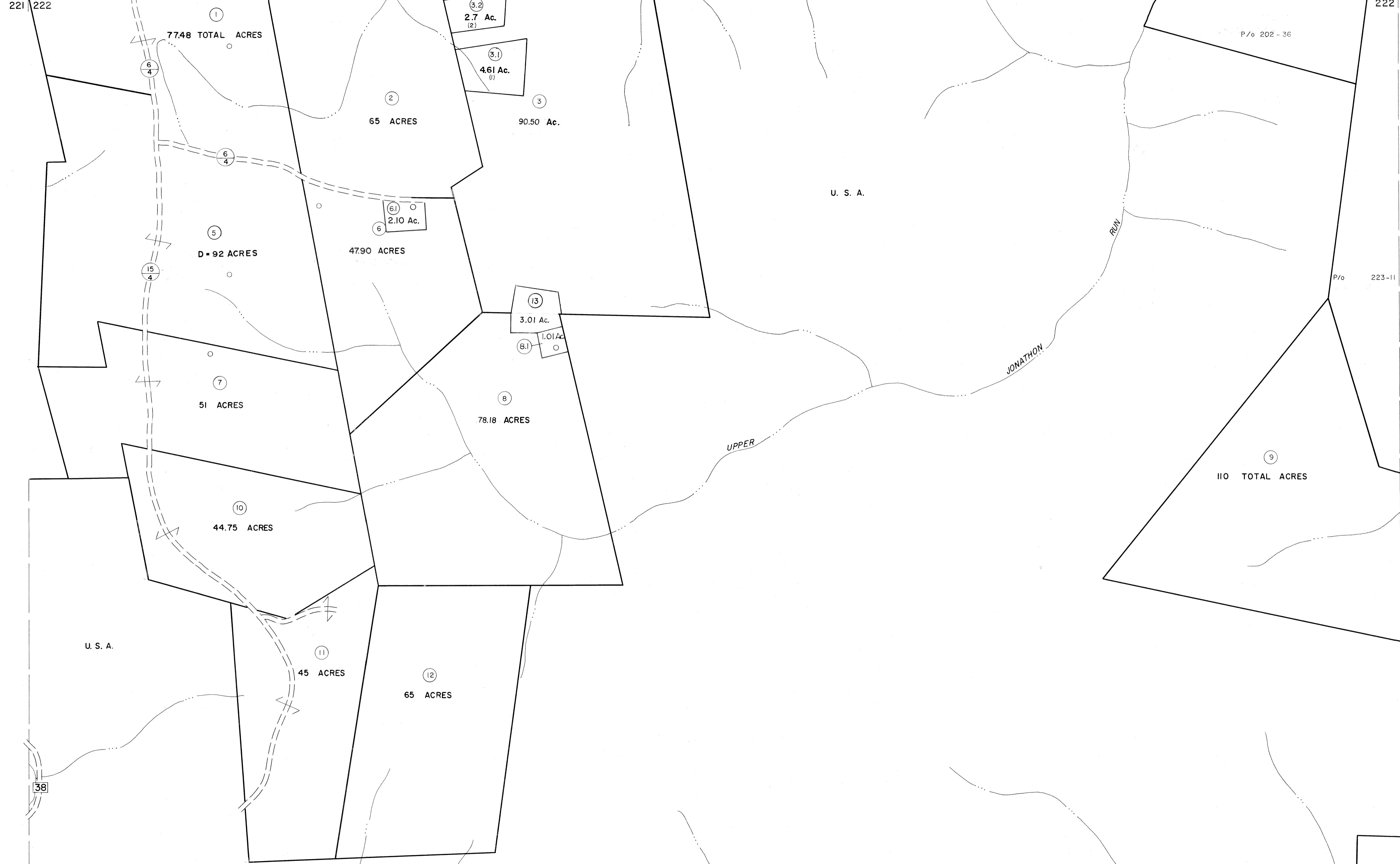


201 202
221 222

202 203
222 223

221 222
241 242

222 223
242 243



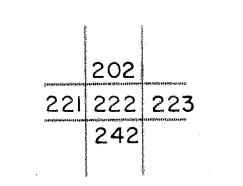
For Tax Purposes Only

Prepared by
MICHAEL BAKER, JR., INC.
Consulting Engineers
Rochester, Pennsylvania

| Legend | |
|-----------------------------|------------------------|
| Property line | Original lot line |
| Edge of pavement or roadway | Deed lot number |
| Corporation line | Parcel or index number |
| District line | Improvement |
| County line | Railroad |

| Revisions | | | |
|-----------|----------------|--------|----|
| 1 | July 1978 | RS | 9 |
| 2 | 7-1-84 | L.E.S. | 10 |
| 3 | REV. TO 3-1-89 | R.E.B. | 11 |
| 4 | OGIS 1/25/93 | DSH | 12 |
| 5 | OGIS 12/11/93 | SAJ | 13 |
| 6 | OGIS 2-95 | HD | 14 |
| 7 | SLS INC. - DDC | 5/97 | 15 |
| 8 | | | 16 |

KEY MAP



TUCKER COUNTY
STATE OF WEST VIRGINIA
Office of Assessor

| | |
|---------------------------|----------------|
| DISTRICT | CLOVER |
| SHEET NO: | 222 |
| Date, Aerial Photography: | November, 1961 |
| Date, Map: | Dec, 1962 |
| Photo No: | |
| Scale: | 1" = 400' |