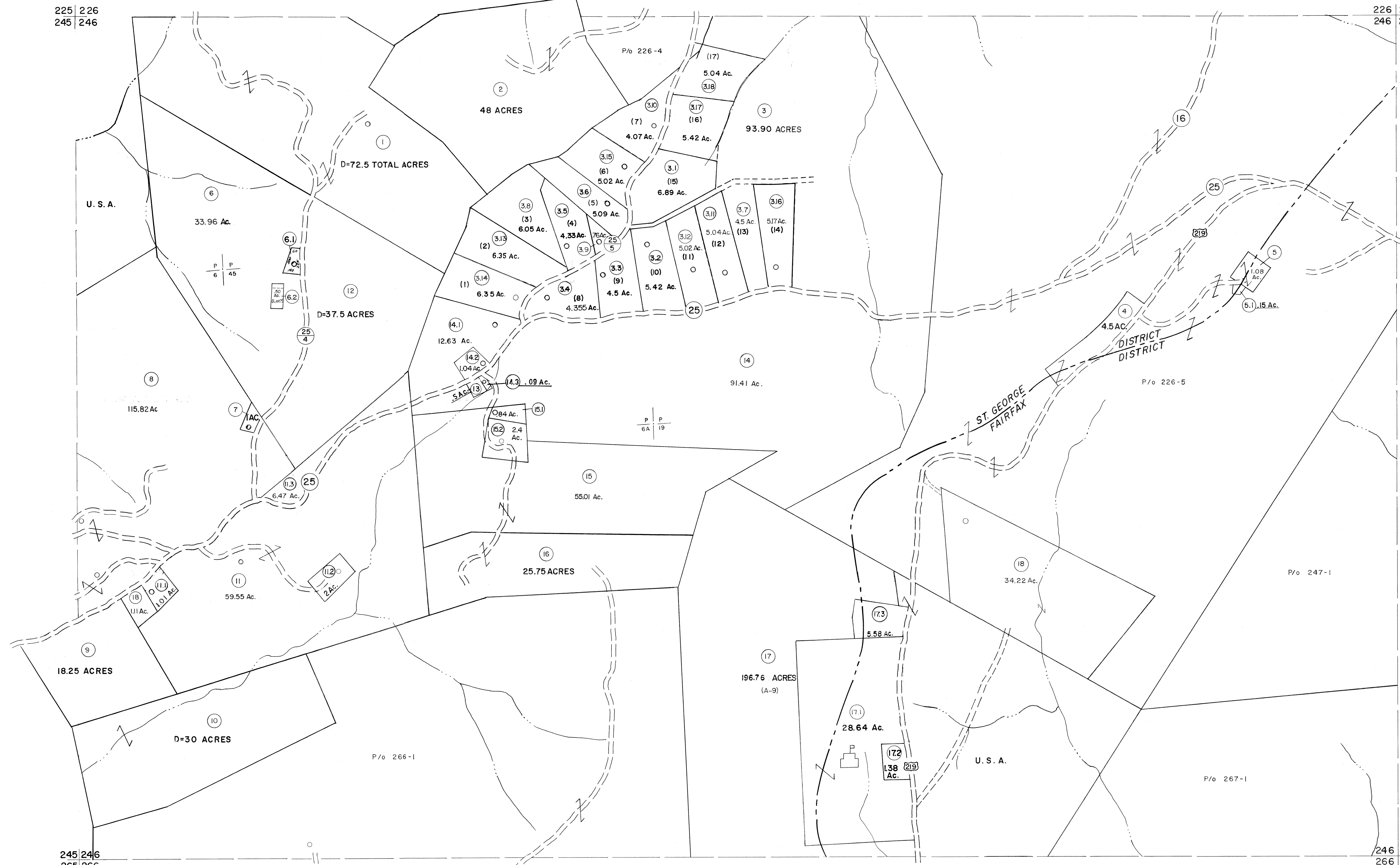


225 226
245 246

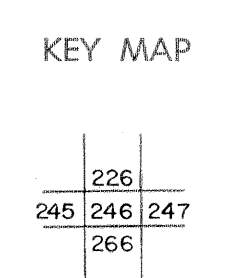
226 227
246 247



For Tax Purposes Only
 Prepared by
MICHAEL BAKER, JR., INC.
 Consulting Engineers
 Rochester, Pennsylvania

Legend	
Property line	—
Edge of pavement or roadway	—
Corporation line	—
District line	—
County line	—
Original lot line	- - - - -
Dead lot number	(15)
Parcel or index number	(25)
Improvement	o
Railroad	—+—+—+—

Revisions	
1	11-21-78 T.G.
2	Revised to 7-1-83
3	7-1-84 L.E.S.
4	Revised to 7-1-87
5	REV. TO 7-1-86 NCS
6	Revised to 7-1-87
7	REV. TO 3-1-89 R.E.B.
8	OGIS 12/31/90 DSH
9	OGIS 3-19-92 TL
10	OGIS 12/11/93 SAJ
11	OGIS 2-95 HD
12	O.G.I.S 4-1-96 J.E.B.
13	SLS INC. - DDC 5/97
14	SLS INC. 2/23/98 JWM
15	ESI 2/8/02 REK
16	
17	ESI 2/20/03 REK
18	HAS 2/19/03
19	3/21/05 S&H
20	3/24/07 S&H
21	
22	
23	
24	



TUCKER COUNTY
 STATE OF WEST VIRGINIA
 Office of Assessor

DISTRICT **ST. GEORGE FAIRFAX**
SHEET NO: 246
 Date, Aerial Photography: Nov., 1961 Date, Map: Dec., 1962
 Photo No: Scale: 1" = 400'