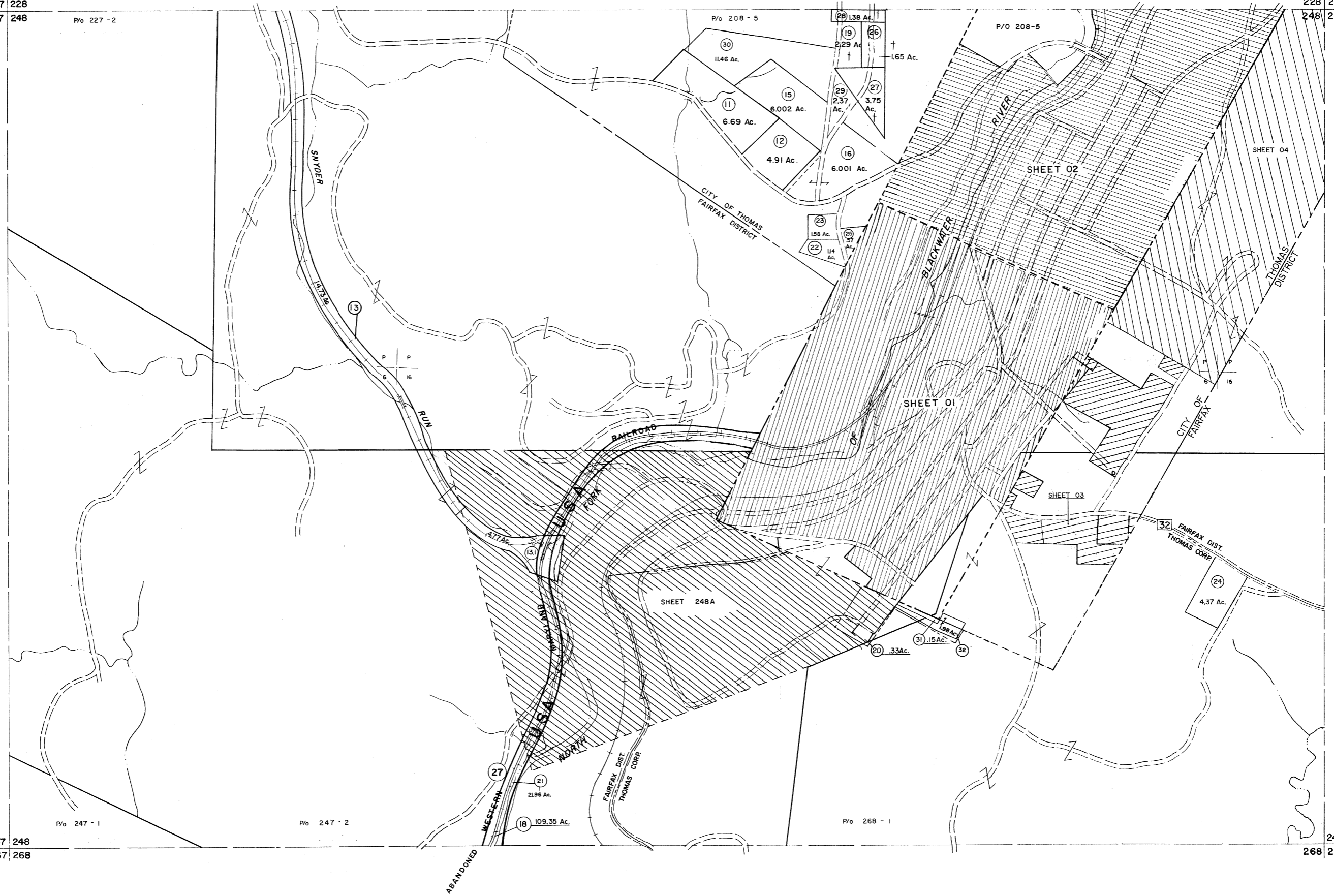


227 228
247 248

P/O 227 - 2

228 229
248 249



247 248
267 268

P/O 247 - 1

P/O 247 - 2

P/O 268 - 1

249
268 269

For Tax Purposes Only
 Prepared by
MICHAEL BAKER, JR., INC.
 Consulting Engineers
 Rochester, Pennsylvania

Legend	
Property line	—
Edge of pavement or roadway	—
Corporation line	—
District line	—
County line	—
Original lot line	— (15)
Dead lot number	— (99)
Parcel or index number	— (O)
Improvement	—
Railroad	—

Revisions	
1	11-27-78 T.C.
2	REV. TO 7-1-86 NCS
3	REV. TO 3-1-89 REB
4	OGIS 1/1/91 DSH
5	OGIS 3-19-92 TL
6	OGIS 1/25/93 DSH
7	OGIS 2-95 HD
8	OGIS 4-1-96 J.E.B.
9	SLS INC. - DDC 5/97
10	SLS INC. - DDC 7/97
11	SLS INC. 2/23/98 JWM
12	SLS INC. 1/27/99 DSW
13	SLS INC. 3/1/00 JWM
14	ESI 2/8/02 REK
15	3/21/05 SBH



TUCKER COUNTY
 STATE OF WEST VIRGINIA
 Office of Assessor

DISTRICT
FAIRFAX - DAVIS
 SHEET NO: 248
 Date, Aerial Photography: November, 1961 Date, Map: Dec. 1962
 Photo No: Scale: 1" = 400'