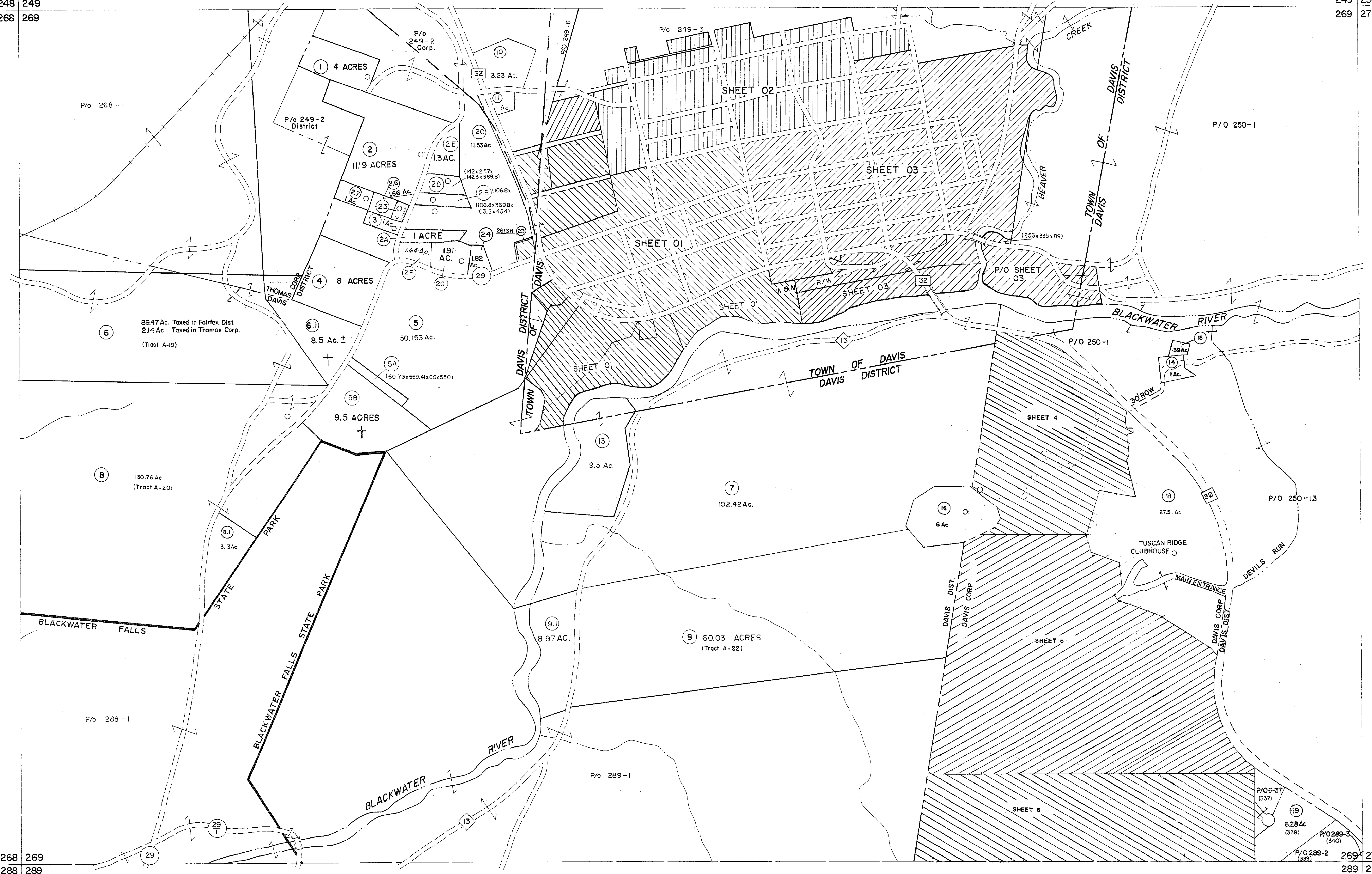


248 249  
268 269

249 250  
269 270



For Tax Purposes Only  
 Prepared by  
**MICHAEL BAKER, JR., INC.**  
 Consulting Engineers  
 Rochester, Pennsylvania

Legend	
Property line	Original lot line
Edge of pavement or roadway	Deed lot number
Corporation line	Parcel or index number
District line	Improvement
County line	Railroad

Revisions	
1	10-3-63
2	11-78 BAH
3	7-1-88
4	7-1-88
5	July, 1986
6	REV. TO 3-1-89
7	OGIS 1/1/91
8	
9	OGIS 1/27/93
10	OGIS 2-95
11	O.G.I.S. 4-1-96
12	SLS INC. - DDC 5/97
13	SLS INC. 2/23/98
14	SLS INC. 1/27/99
15	SLS INC. 3/2/00
16	ESI 1/31/01
17	ESI 2/8/02
18	ESI 2/20/03
19	HBS 2/19/04
20	3/24/07
21	6-22-08
22	6-21-09
23	5-8-10
24	6/24/11

5-4-13 443  
 5/28/15 SBH  
 KEY MAP  
 249  
 268 269 270  
 289

**TUCKER COUNTY**  
 STATE OF WEST VIRGINIA  
 Office of Assessor

DISTRICT  
**DAVIS**  
 SHEET NO: 269  
 Date, Aerial Photography: November, 1961 Date, Map: Dec., 1962  
 Photo No. Scale: 1" = 400'