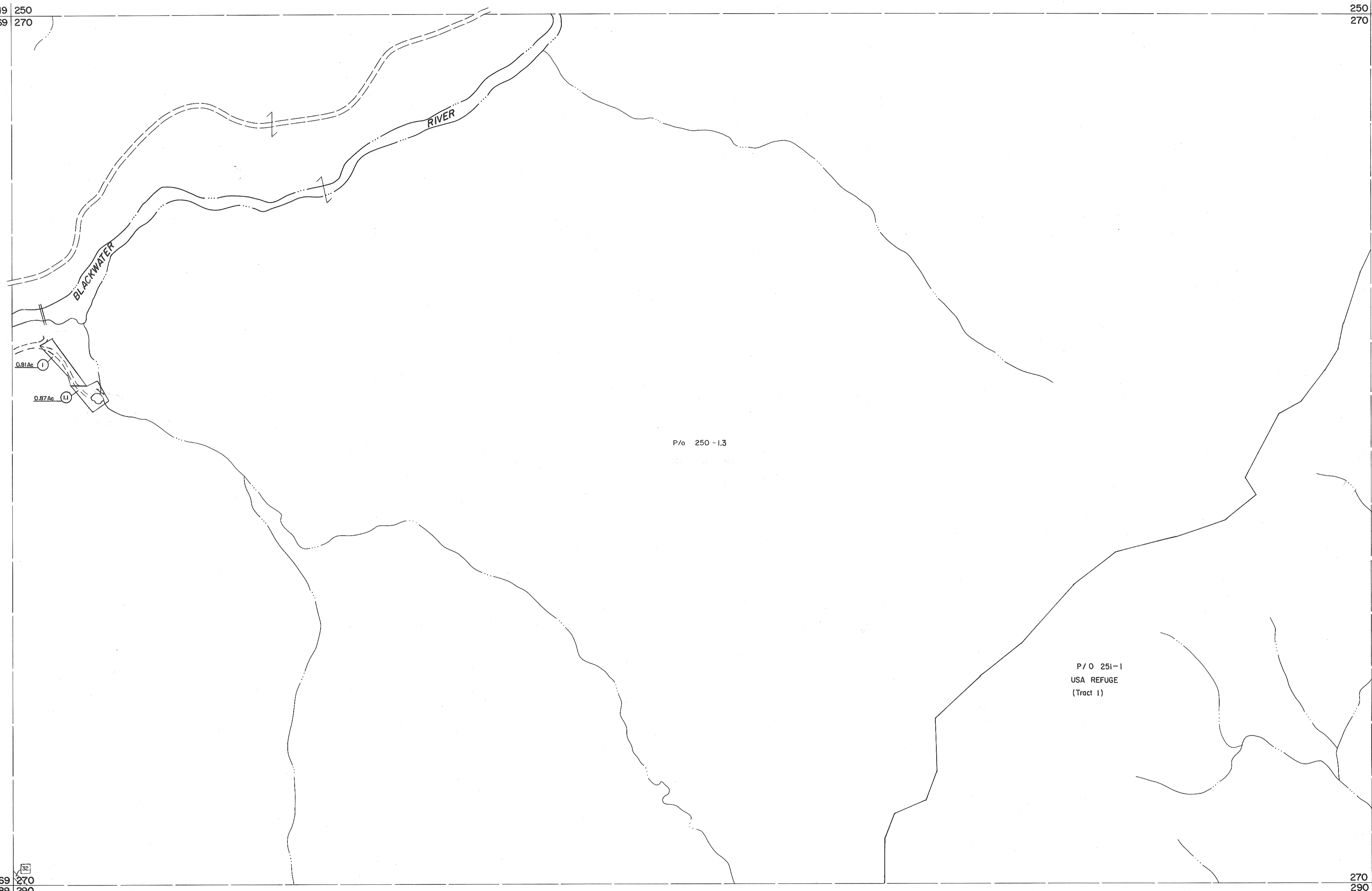


249 250  
269 270

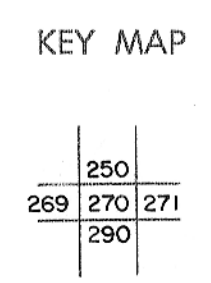
250 251  
270 271



For Tax Purposes Only  
 Prepared by  
**MICHAEL BAKER, JR., INC.**  
 Consulting Engineers  
 Rochester, Pennsylvania

Legend	
Property line	—————
Edge of pavement or roadway	———+———
Corporation line	-----
District line	- - - - -
County line	—————
Original lot line	-----
Deed lot number	(15)
Parcel or index number	(22)
Improvement	o
Railroad	—+—+—+—

Revisions	
1	Revised to 7-1-88 J.F.
2	REV. TO 3-1-89 R.E.B.
3	HBS 2/19/04
4	6-22-08 H.S.
5	6-21-09 H.S.
6	3-4-13 H.S.
7	
8	



**TUCKER COUNTY**  
 STATE OF WEST VIRGINIA  
 Office of Assessor

DISTRICT **DAVIS**  
 SHEET NO: 270  
 Date, Aerial Photography: November, 1961 Date, Map: Dec., 1962  
 Photo No: Scale: 1" = 400'