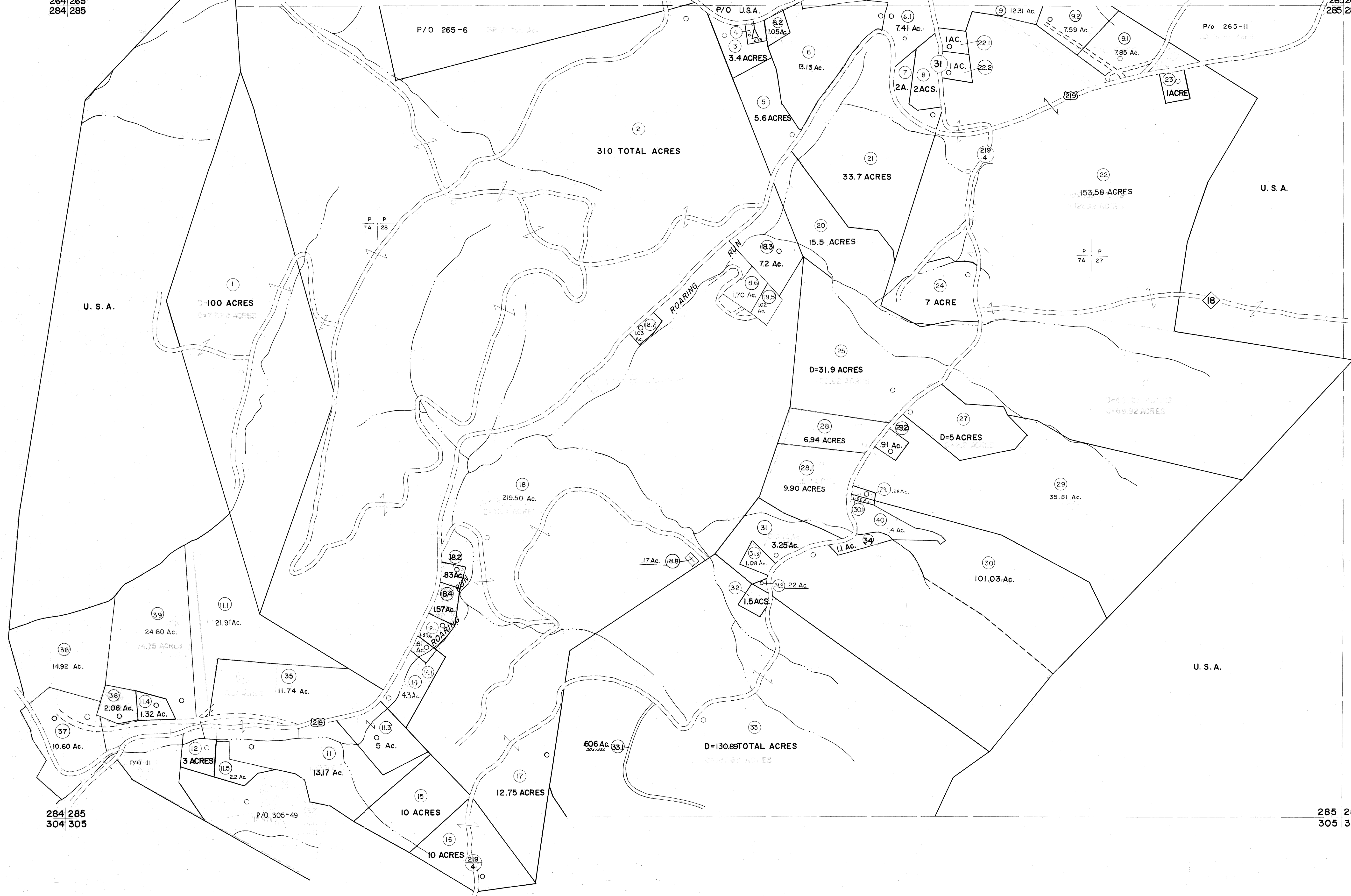


264 265  
284 285

265 266  
285 286



284 285  
304 305

285 286  
305 306

For Tax Purposes Only

Prepared by  
MICHAEL BAKER, JR., INC.  
Consulting Engineers  
Rochester, Pennsylvania

Legend	
Property line	—
Edge of pavement or roadway	- - - -
Corporation line	— · — · —
District line	- - - -
County line	— · — · —
Original lot line	- - - -
Dead lot number	(15)
Parcel or index number	(22)
Improvement	○
Railroad	— + — + —

Revisions			
1	10-3-63	9	OGIS 3-19-92 TL
2	6-4-75 T.G.	10	OGIS 12/12/93 SAJ
3	11-29-78 T.G.	11	O.G.I.S. 4-1-96 J.E.B.
4	Revised to 7-1-85	12	SLS INC. - DDC 5/97
5	7-1-84 L.E.S.	13	SLS INC. 2/27/98 JWM
6	July 1985	14	SLS INC. 1/27/99 DSW
7	Revised to 3-1-89	15	SLS INC. 3/2/00 JWM
8	OGIS 1/1/91 DSH	16	ESI 2/1/01 REK
		17	ESI 2/8/02 REK
		18	ESI 2/20/03 REK
		19	HBS 2/19/04
		20	3/21/05 S & H
		21	3/24/07 S & H
		22	
		23	
		24	

KEY MAP

**TUCKER COUNTY**  
STATE OF WEST VIRGINIA  
Office of Assessor

DISTRICT **BLACKFORK**

SHEET NO: 285

Date, Aerial Photography: November, 1961 Date, Map: Dec, 1962  
Photo No: Scale: 1" = 400'