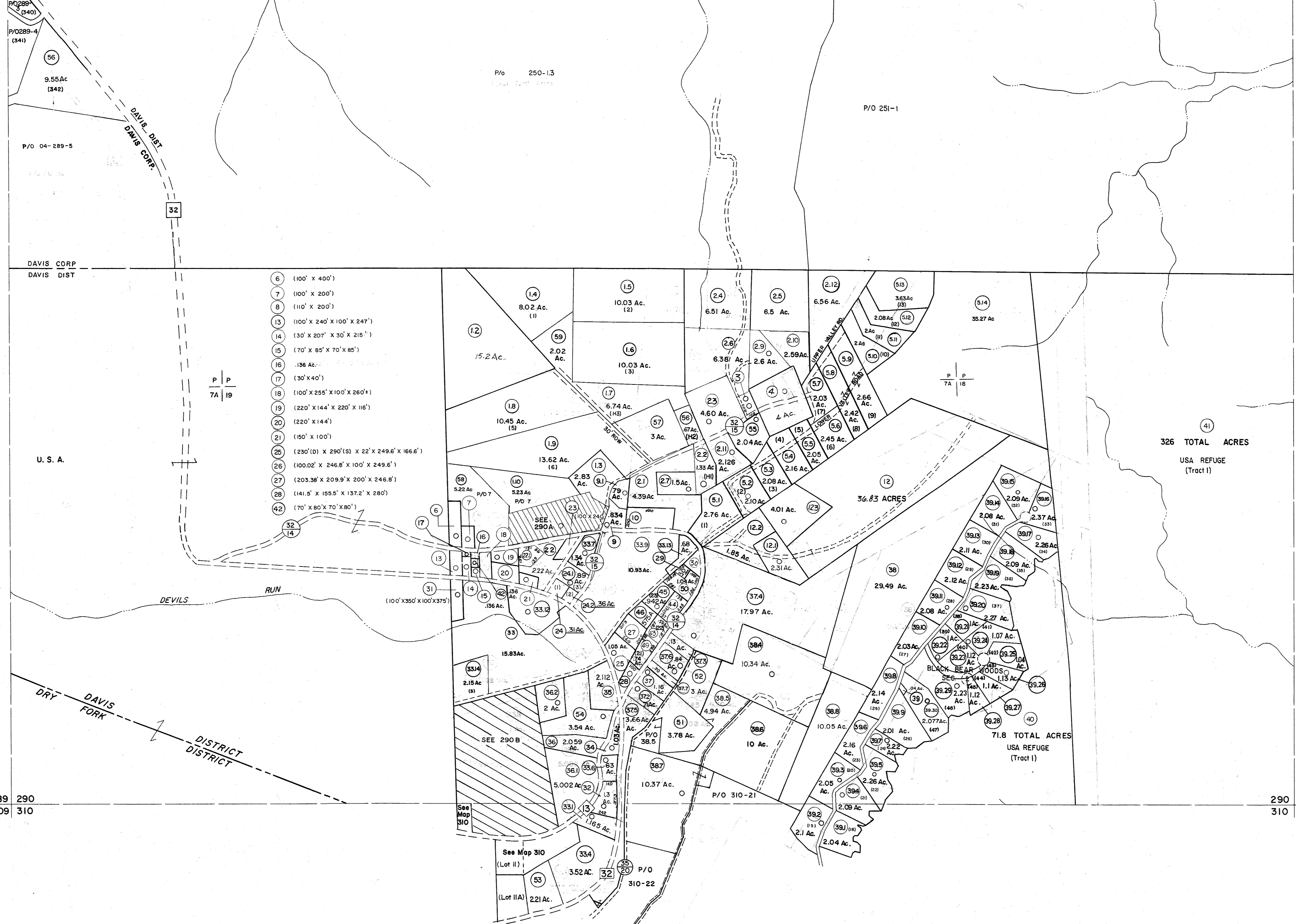


269 270  
289 290

270 271  
290 291



- 6 (100' X 400')
- 7 (100' X 200')
- 8 (110' X 200')
- 13 (100' X 240' X 100' X 247')
- 14 (30' X 207' X 30' X 215')
- 15 (70' X 85' X 70' X 85')
- 16 .136 Ac.
- 17 (30' X 40')
- 18 (100' X 255' X 100' X 260')
- 19 (220' X 144' X 220' X 116')
- 20 (220' X 144')
- 21 (150' X 100')
- 25 (230'(D) X 290'(S) X 22' X 249.6' X 166.6')
- 26 (100.02' X 246.8' X 100' X 249.6')
- 27 (203.38' X 209.9' X 200' X 246.6')
- 28 (141.5' X 155.5' X 137.2' X 280')
- 42 (70' X 80' X 70' X 80')

P | P  
7A | 19

P | P  
7A | 18

326 TOTAL ACRES  
USA REFUGE  
(Tract I)

71.8 TOTAL ACRES  
USA REFUGE  
(Tract I)

**For Tax Purposes Only**

Prepared by  
MICHAEL BAKER, JR., INC.  
Consulting Engineers  
Rochester, Pennsylvania

Legend	
Property line	Original lot line
Edge of pavement or roadway	Deed lot number
Corporation line	Parcel or index number
District line	Improvement
County line	Railroad

Revisions	
1 10-3-63	9 REV. TO 3-1-89
2 6-3-64	10 OGIS 1/1/91
3 4-78 BAH	11 OGIS 3-19-92
4 Revised to 7-1-85	12 OGIS 1/29/93
5 7-1-84	13 OGIS 12/12/93
6 Revised to 7-1-85	14 OGIS 2-95
7 July, 1986	15 O.G.I.S 4-1-96
8 Revised to 7-1-87	16

6-22-08 H 4 S  
6-21-09 H 4 S  
5-8-10 KEY MAP H 4 S  
6/27/11 S 8 H  
5-4-13 H 4 S

5/31/15 S 8 H

**TUCKER COUNTY**  
STATE OF WEST VIRGINIA  
Office of Assessor

DISTRICT - **DAVIS - DRY FORK**

**SHEET NO: 290**

Date, Aerial Photography: November, 1961 Date, Map: Dec, 1962  
Photo No: Scale: 1" = 400'