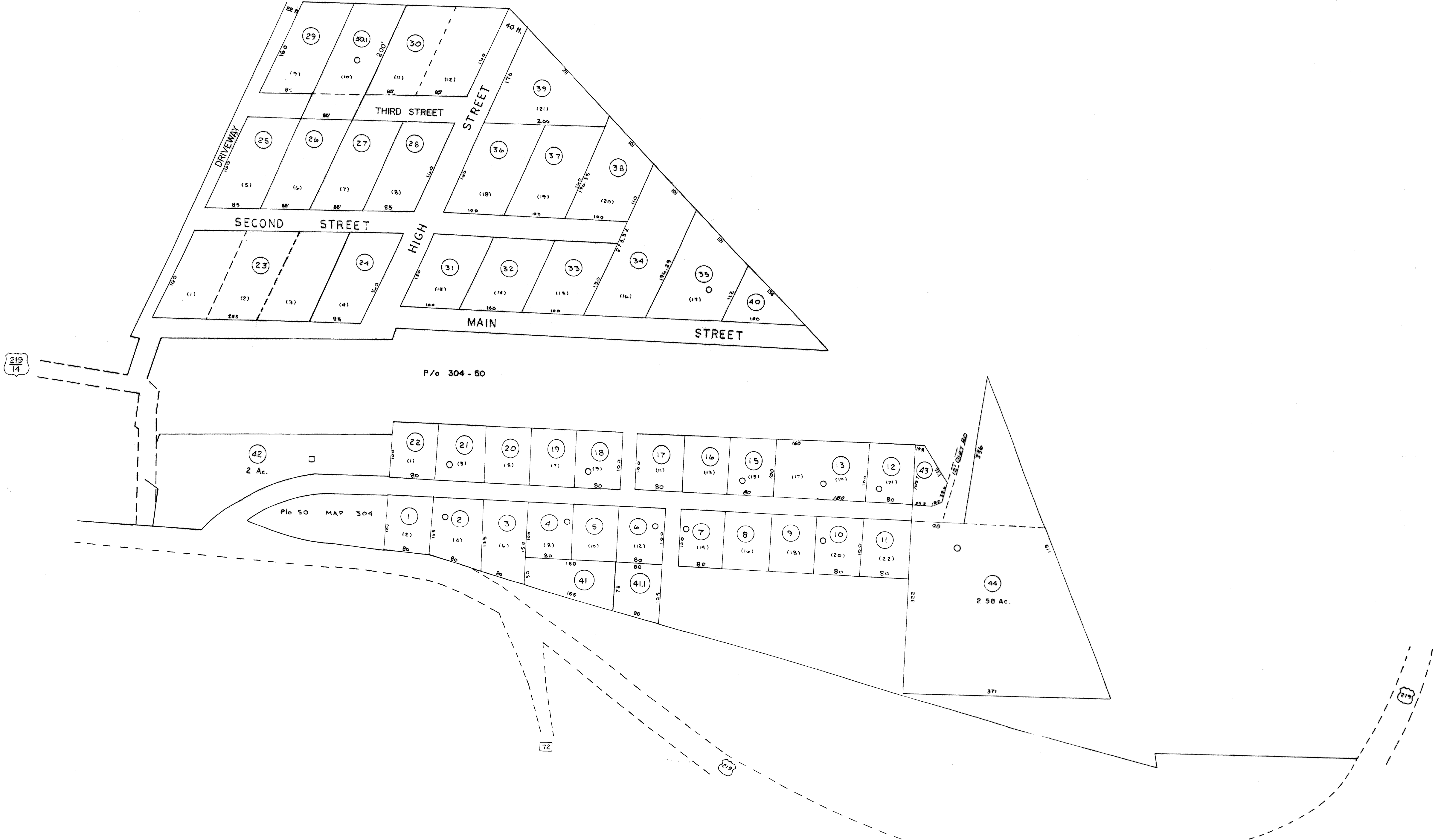


PURNELL SUB-DIV.



For Tax Purposes Only

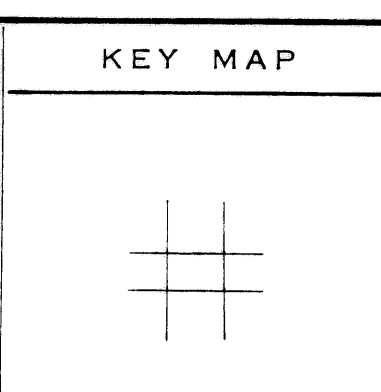
Prepared by
LOCAL GOVERNMENT RELATIONS DIV.
STATE TAX COMMISSIONER
CHARLESTON, W.VA.

LEGEND	
Property line	Original lot line
Edge of pavement or roadway	Dead lot number
Corporation line	Parcel or index number
District line	Improvement
County line	Railroad

REVISIONS		
1	6-4-75	J.C.
2	11-28-78	D.G.
3	Revised to 7-1-83	J.P.
4	OGIS 3-19-92	TL
5	O.G.I.S. 4-1-96	J.E.B.
6	SLS INC. - DDC 5/97	
7	SLS INC. 3/3/98	J.W.M.
8	SLS INC. 1/28/99	DSW
9	ESI 2/1/01	REK
	ESI 2/20/03	REK

RESTRICTION

All tax maps created under the provisions of reappraisal legislation are the property of the State of West Virginia and the reproduction, copying, distribution or sale of such tax maps or any copies thereof without the written permission of the State Tax Commissioner is prohibited by law.



TUCKER COUNTY
STATE OF WEST VIRGINIA
OFFICE OF ASSESSOR

BLACKFORK
304-A
Date, Aerial Photography: _____ Date, Map: _____
Photo No: _____ Scale: 1" = 100'