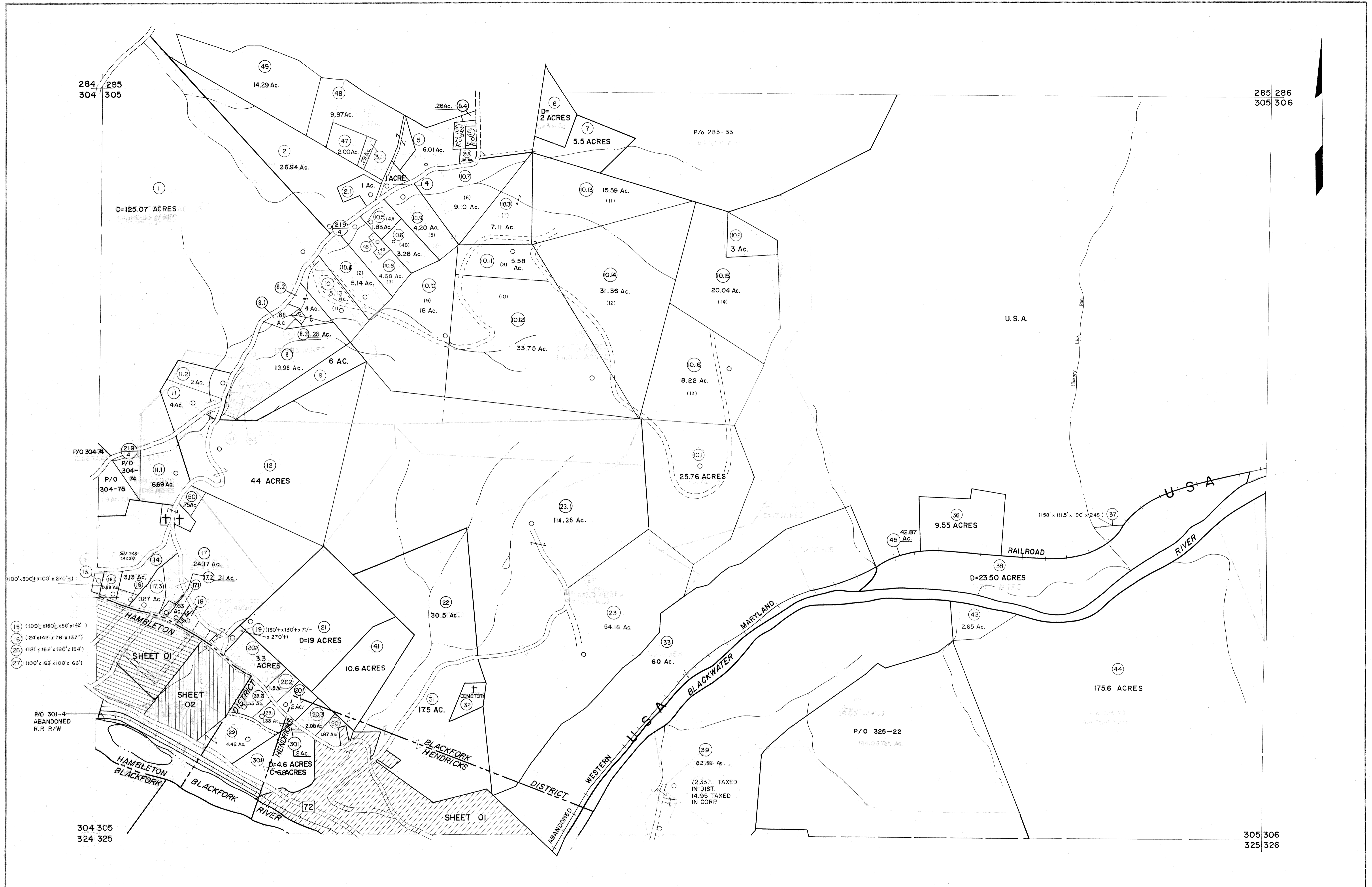


284 285
304 305

285 286
305 306



- (15) (100' x 150' x 50' x 142')
- (16) (124' x 142' x 78' x 137')
- (26) (181' x 165' x 180' x 154')
- (27) (100' x 168' x 100' x 166')

D=125.07 ACRES

P/O 285-33

U.S.A.

U.S.A.

RAILROAD

D=23.50 ACRES

HAMBLETON

SHEET 01

SHEET 02

HAMBLETON BLACKFORK

BLACKFORK RIVER

BLACKFORK HENDRICKS

DISTRICT

WESTERN

BLACKWATER

MARYLAND

175.6 ACRES

P/O 325-22

304 305
324 325

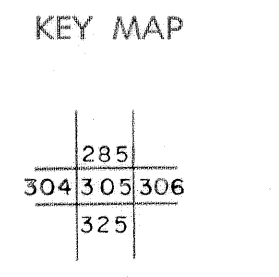
305 306
325 326

For Tax Purposes Only

Prepared by
MICHAEL BAKER, JR., INC.
Consulting Engineers
Rochester, Pennsylvania

Legend	
Property line	Original lot line
Edge of pavement or roadway	Deed lot number
Corporation line	Parcel or index number
District line	Improvement
County line	Railroad

Revisions	
1	10-3-63
2	6-3-75
3	11-26-78 BAH
4	Revised to 7-1-83
5	Revised to 7-1-85
6	July, 1986 TRL
7	Revised to 7-1-87
8	Revised to 3-1-89
9	OGIS 1/4/91 DSH
10	OGIS 3-19-92 TL
11	OGIS 1/30/93 DSH
12	OGIS 12/11/93 SAJ
13	OGIS 2-95 HD
14	O.G.I.S. 4-1-96 J.E.B.
15	SLS INC. - DDC 5/97
16	SLS INC. 3/3/98 JWM
17	SLS INC. 1/28/99 DSW
18	SLS INC. 3/2/00 JWM
19	ESI 2/1/01 REK
20	ESI 2/20/02 REK
21	H&S 2/19/04
22	3/21/05 S&H
23	3/24/07 S&H
24	



TUCKER COUNTY
STATE OF WEST VIRGINIA
Office of Assessor

DISTRICT
BLACKFORK

SHEET NO: 305

Date, Aerial Photography: November, 1961 Date, Map: Dec, 1962
Photo No: Scale: 1" = 400'