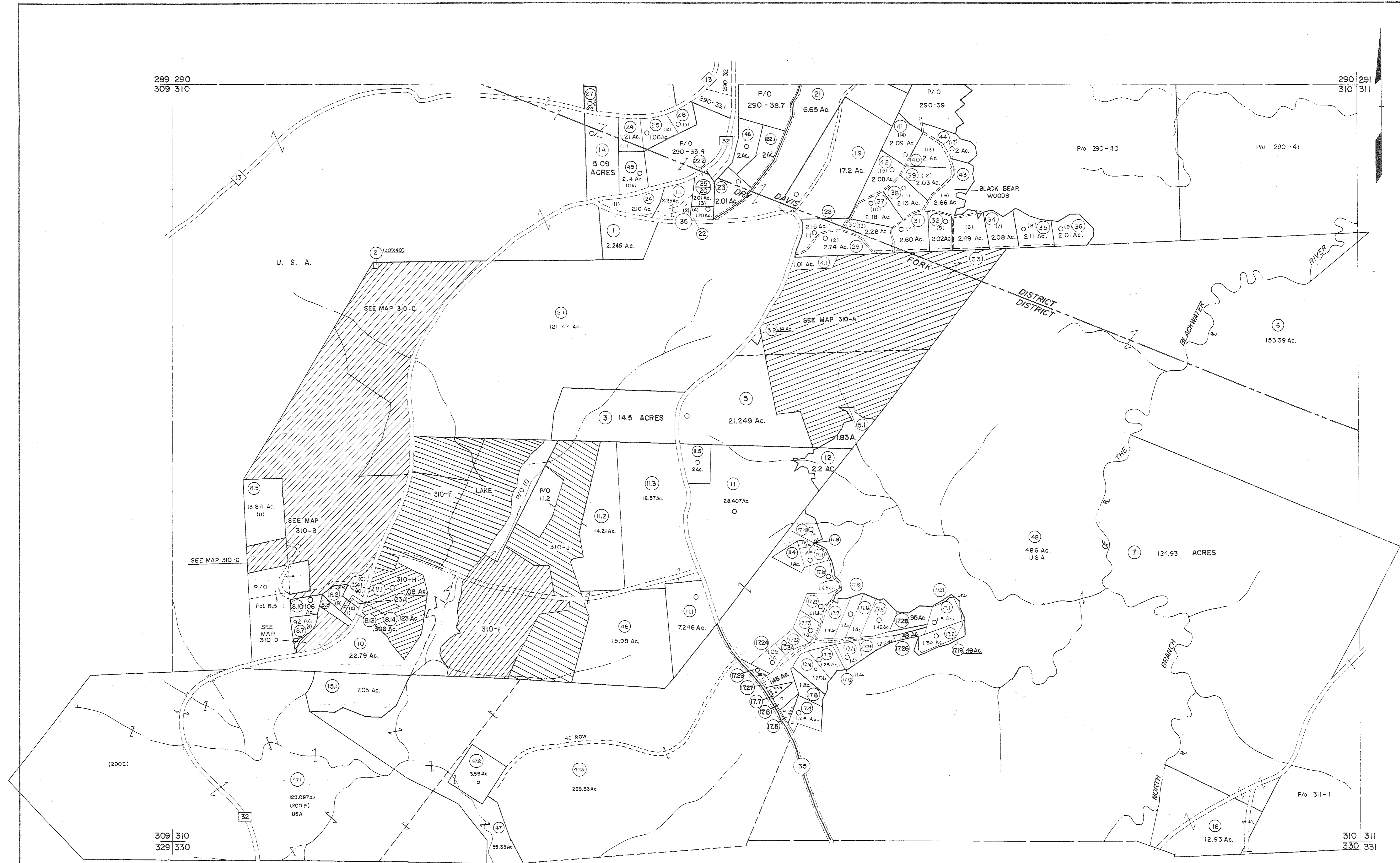


289 290
309 310

290 291
310 311

309 310
329 330

310 311
330 331



For Tax Purposes Only

Prepared by
MICHAEL BAKER, JR., INC.
Consulting Engineers
Rochester, Pennsylvania

Legend	
Property line	———
Edge of pavement or roadway	———
Corporation line	———
District line	———
County line	———
Original lot line	———
Deed lot number	(15)
Parcel or index number	(99)
Improvement	○
Railroad	———

Revisions	
1 6-5-75	JC
2 11-27-78	DA
3 Revised to 7-1-83	DA
4 7-1-84	L.E.S.
5 Revised to 7-1-85	TRL
6 July 1986	TRL
7 Revised to 7-1-87	DA
8 Revised to 7-1-87	DA
9 OGIS 1/4/91	DSH
10 OGIS 3-19-92	TL
11 OGIS 1/30/93	DSH
12 OGIS 12/11/93	SAJ
13 OGIS 2-95	HD
14 O.G.I.S. 4-1-96	J.E.B.
15 SLS INC. - DDC 5/97	
16 SLS INC. - DDC 7/97	
17 SLS INC. 1/28/99	DSW
18 SLS INC. 3/2/00	JWM
19 ESI 2/1/01	REK
20 ESI 2/8/02	REK
21 ESI 2/20/03	REK
22 H&S 2/19/04	
23 3/21/05	S&H
24 3/24/07	S&H

5-22-08
6-21-09
445
445

KEY MAP
6/24/11
5-4-13
S&H

290
309 310 311
330

5/25/15 S&H

TUCKER COUNTY
STATE OF WEST VIRGINIA
Office of Assessor

DISTRICT
DAVIS DRY FORK

SHEET NO: 310

Date, Aerial Photography: November, 1961 Date, Map/Dec. 1962
Photo No. Scale: 1" = 400'