

311|312  
331|332

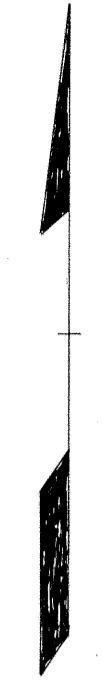
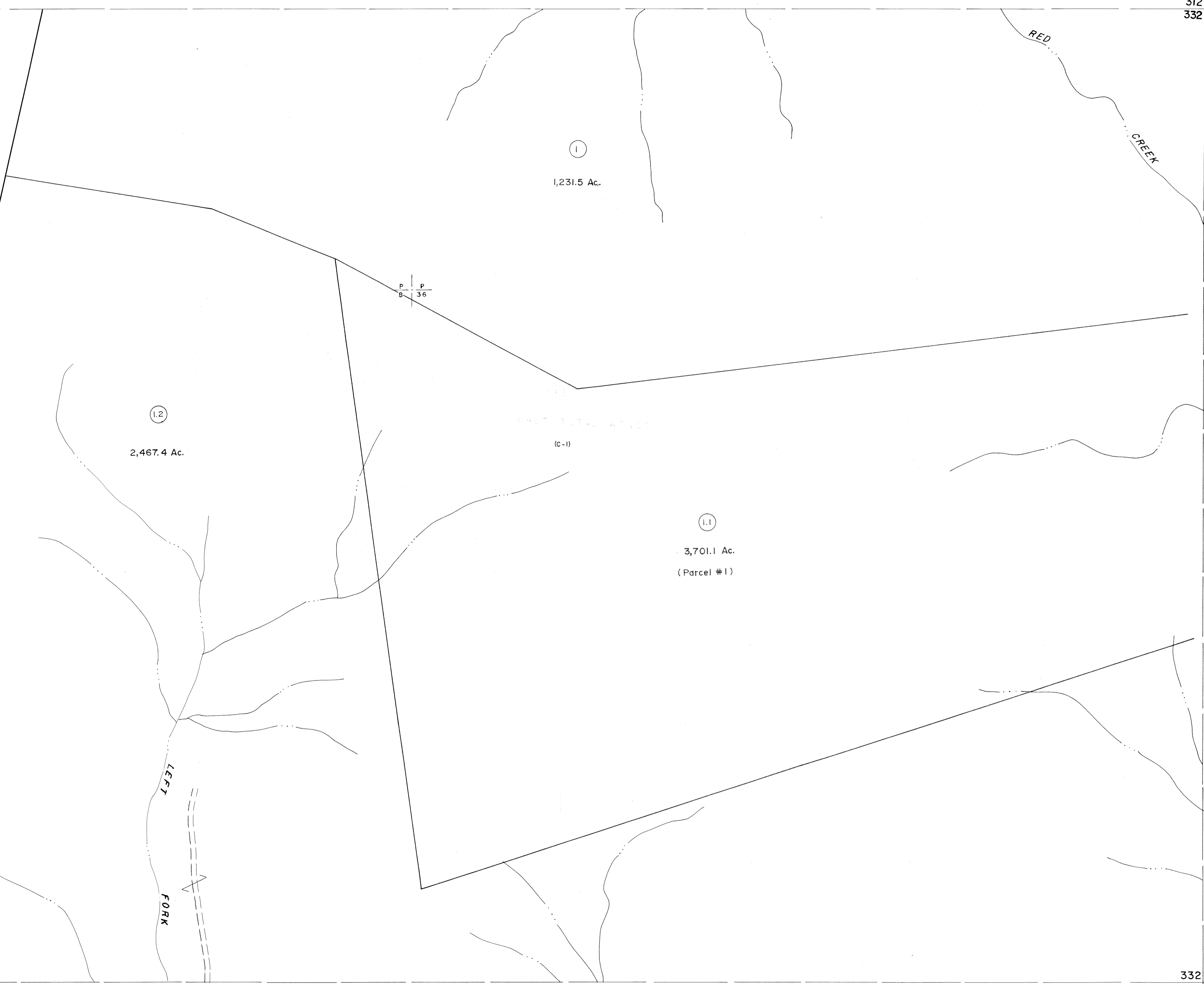
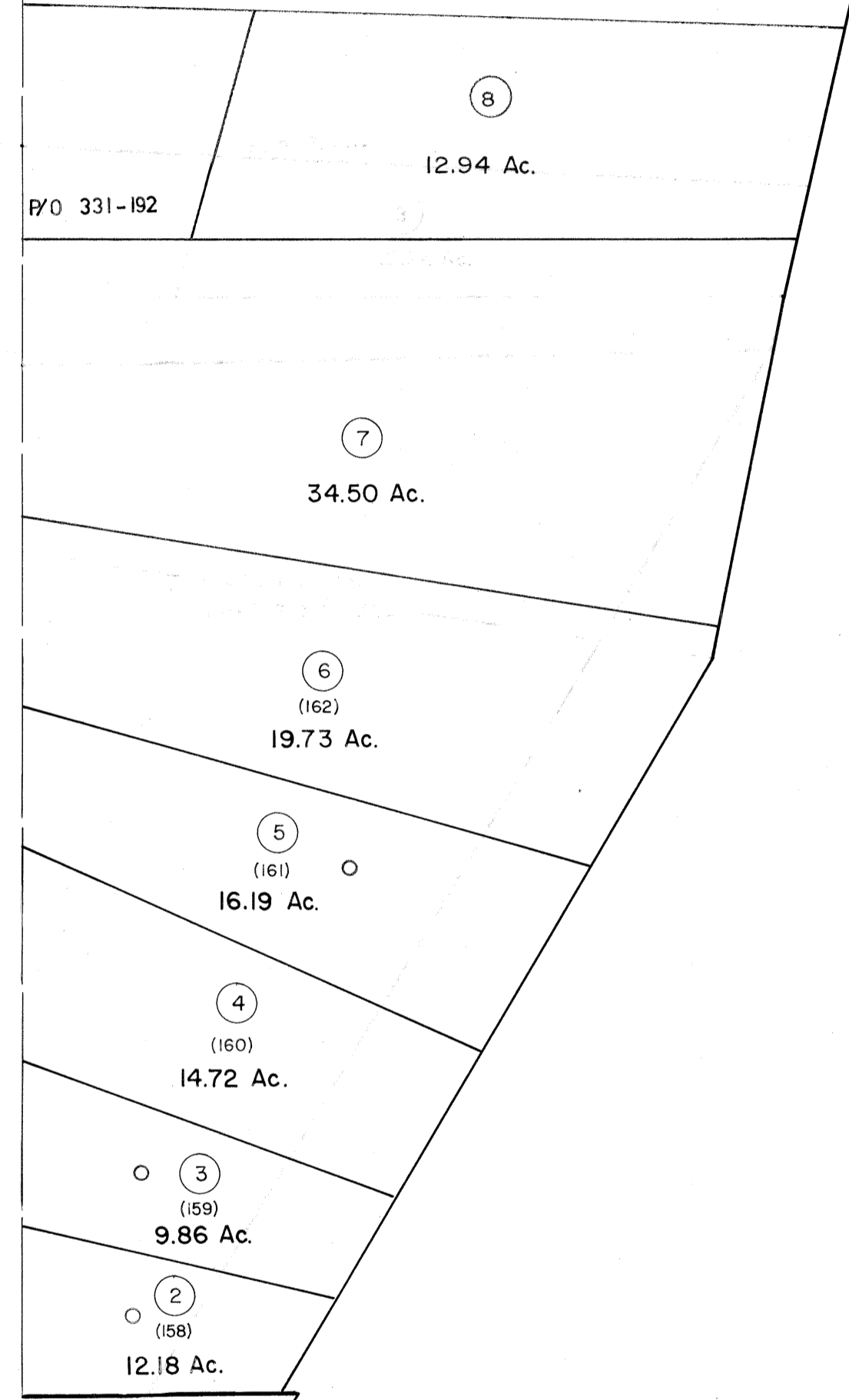
312|313  
332|333

P/o 331-2

P/O 331-192

331|332  
351|352

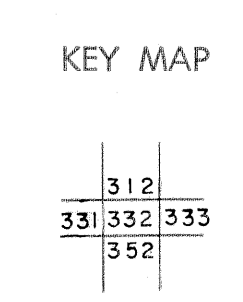
332|333  
352|353



For Tax Purposes Only  
Prepared by  
MICHAEL BAKER, JR., INC.  
Consulting Engineers  
Rochester, Pennsylvania

Legend	
Property line	—————
Edge of pavement or roadway	- - - - -
Corporation line	- · - · -
District line	- - - - -
County line	- - - - -
Original lot line	—————
Dead lot number	(5)
Parcel or index number	(2)
Improvement	○
Railroad	—+—+—+—

Revisions	
1	Revised to 7-1-88
2	July, 1986 TRL
3	REV. TO 3-1-89 R.E.B.
4	OGIS 1/5/91 DSH
5	OGIS 3-19-92 TL
6	OGIS 1/31/93 DSH
7	O.G.I.S. 4-1-96 J.E.B.
8	SLS INC. 1/28/99 DSW



TUCKER COUNTY  
STATE OF WEST VIRGINIA  
Office of Assessor

DISTRICT	DRY FORK
SHEET NO: 332	
Date, Aerial Photography: November, 1961	Date, Map: Dec., 1962
Photo No:	Scale: 1" = 400'