

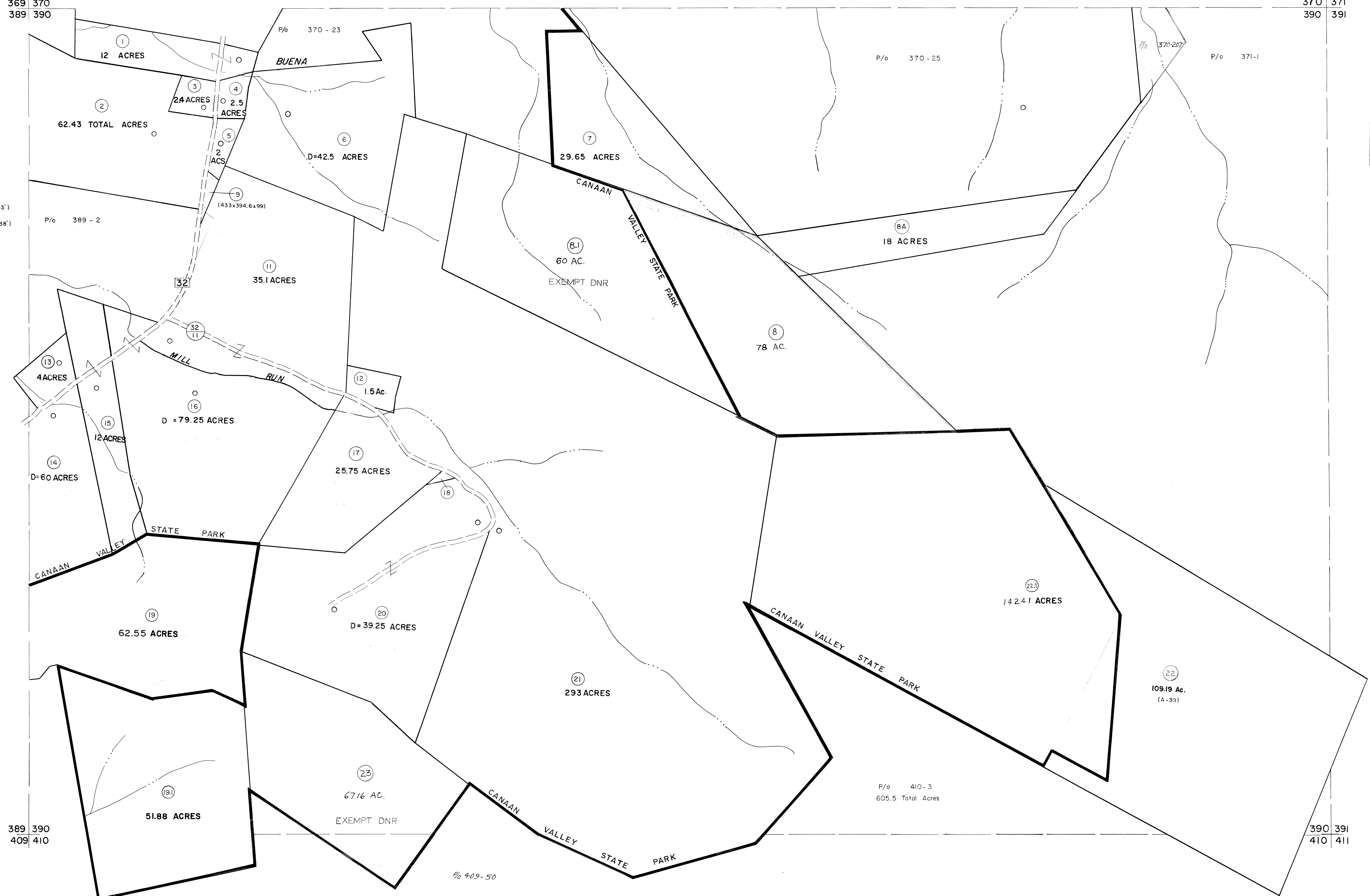
369 370
389 390

370 371
390 391

(10) (394' x 99' x 433')
(18) (148' x 148' x 138')

389 390
409 410

390 391
410 411



For Tax Purposes Only

Prepared by
MICHAEL BAKER, JR., INC.
Consulting Engineers
Rochester, Pennsylvania

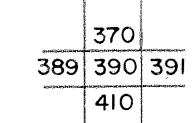
Legend

Property line	-----	Original lot line	-----
Edge of pavement or roadway	-----	Deed lot number	(15)
Corporation line	-----	Parcel or index number	(99)
District line	-----	Improvement	o
County line	-----	Railroad	+

Revisions

1	1/0-3-63	9		17	
2	6-5-75	10		18	
3	REV TO 7-1-83	11		19	
4	7-1-84	12		20	
5	July, 1986	13		21	
6	OGIS 1/6/91	14		22	
7	OGIS 2/1/93	15		23	
8	OGIS 12/12/93	16		24	

KEY MAP



TUCKER COUNTY
STATE OF WEST VIRGINIA
Office of Assessor

DISTRICT

DRY FORK

SHEET NO: 390

Date, Aerial Photography: November, 1961 Date, Map: Dec., 1962
Photo No: Scale: 1" = 400'