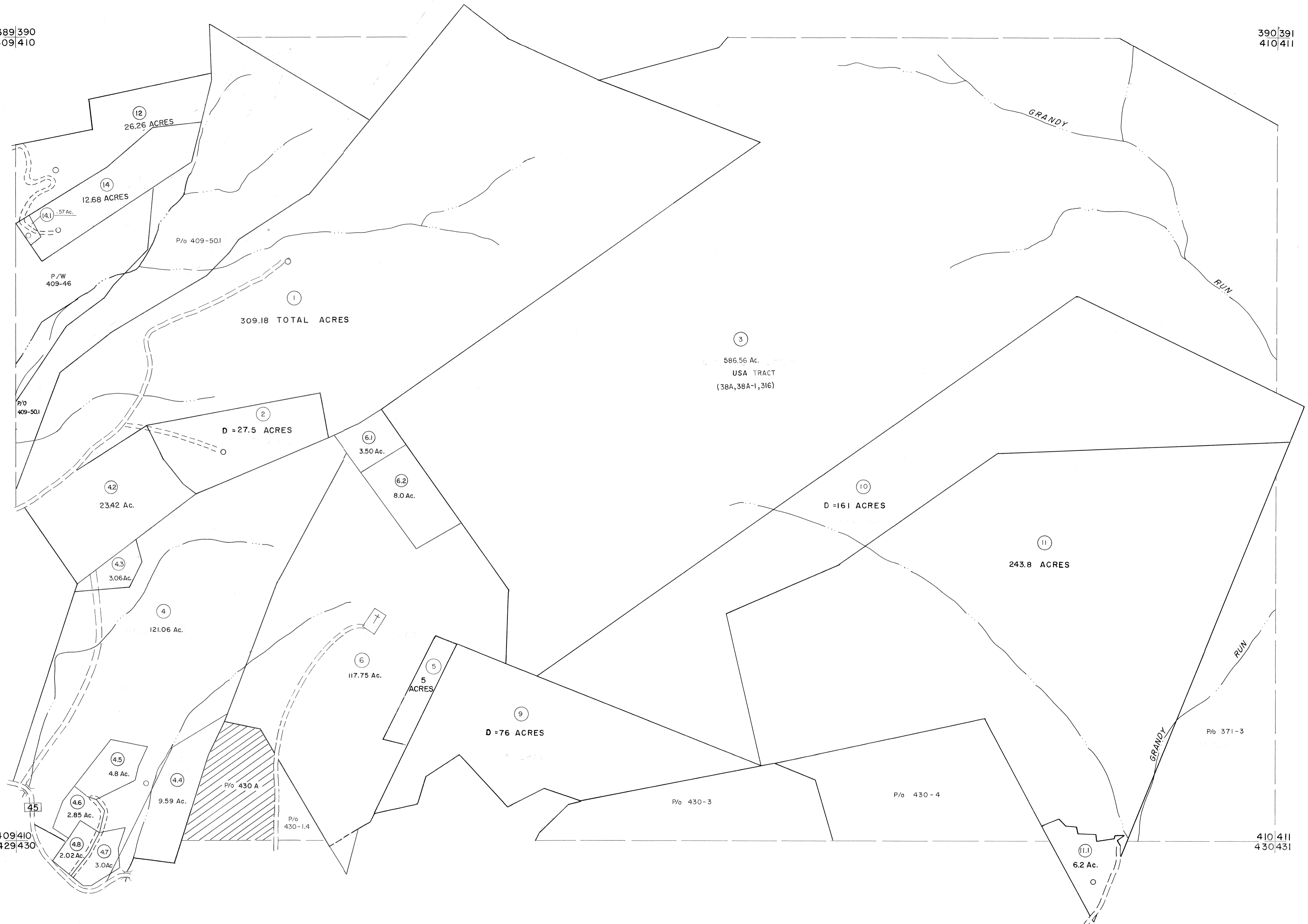


389|390
409|410

390|391
410|411



For Tax Purposes Only

Prepared by
MICHAEL BAKER, JR., INC.
Consulting Engineers
Rochester, Pennsylvania

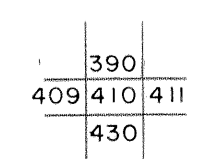
Legend

| | | | |
|-----------------------------|---|------------------------|------|
| Property line | — | Original lot line | — |
| Edge of pavement or roadway | — | Deed lot number | (13) |
| Corporation line | — | Parcel or index number | (22) |
| District line | — | Improvement | ○ |
| County line | — | Railroad | — |

Revisions

| | | | | | | | |
|---|----------------|--------|----|----------------|---------|-----|----|
| 1 | 11-27-78 | DA | 9 | SLS INC. - DDC | 5/97 | 17 | |
| 2 | REV. TO 7-1-83 | NCS | 10 | SLS INC. | 3/4/98 | JWM | 18 |
| 3 | 7-1-84 | L.E.S. | 11 | SLS INC. | 1/28/99 | DSW | 19 |
| 4 | REV. TO 7-1-85 | NCS | 12 | ESI | 2/12/02 | REK | 20 |
| 5 | REV. TO 3-1-89 | R.E.B. | 13 | ESI | 2/20/03 | REK | 21 |
| 6 | OGIS 2/11/93 | DSH | 14 | H&S | 2/04 | | 22 |
| 7 | OGIS 12/12/93 | SAJ | 15 | | 3/21/05 | SBH | 23 |
| 8 | O.G.I.S 4-1-96 | J.E.B | 16 | | 3/18/06 | SBH | 24 |

KEY MAP



TUCKER COUNTY
STATE OF WEST VIRGINIA
Office of Assessor

DISTRICT

DRY FORK

SHEET NO: 410

Date, Aerial Photography: Nov, 1961 Date, Map: Dec, 1962
Photo No: Scale: 1" = 400'