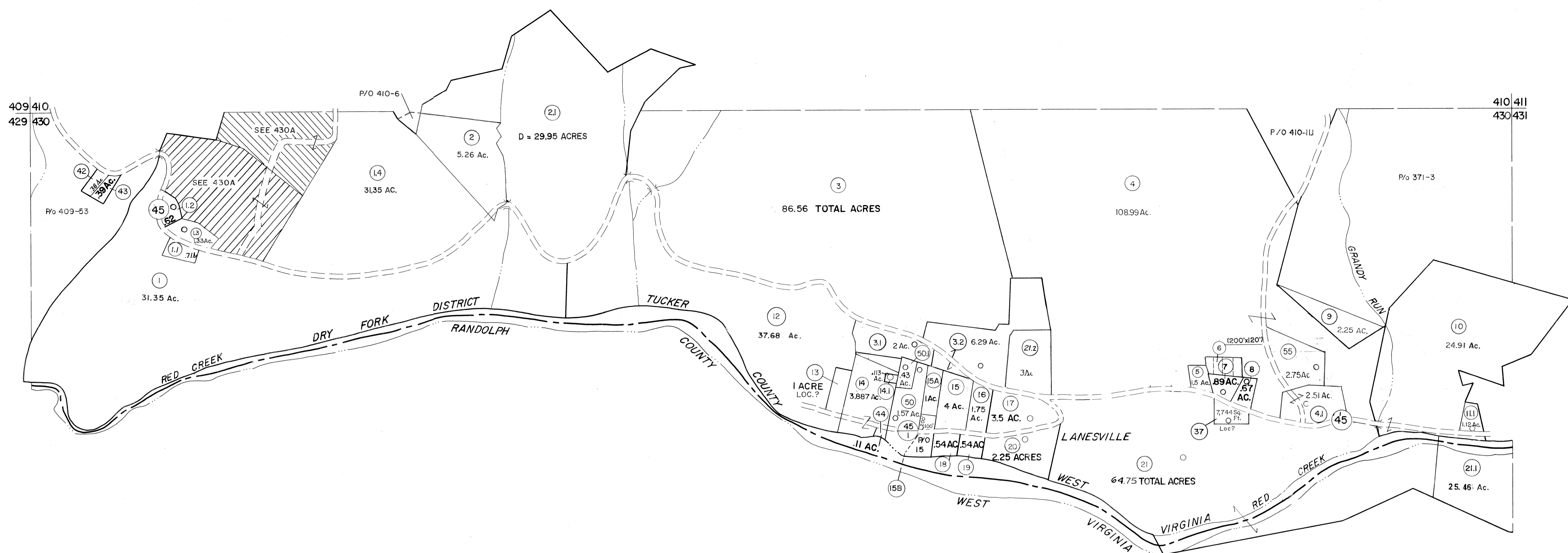


409/410
429/430

410/411
430/431



429/430

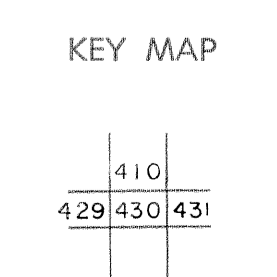
430/431

- 22) 10,331 Sq. Ft.
- 23) 5,100 Sq. Ft.
- 24) Lot 8 & 4,000 Sq. Ft.
- 25) Lot 10
- 26) Lot 6
- 27) .25 Ac.
- 28) 1.25 Ac.
- 29) 10,082 Sq. Ft.
- 30) 90 Sq. Rds.
- 31) .12 & .50 Ac.
- 32) 6,400 Sq. Ft.
- 33) .25 Ac.
- 34) 69 Sq. Pls.
- 35) Lot 9
- 36) .25 Ac.
- 38) 1/2 of Lot 26
- 39) Lot 21
- 40) 70 Ac.
- 41) 50 Ac.
- 51) 1/4 Ac.

For Tax Purposes Only
 Prepared by
MICHAEL BAKER, JR., INC.
 Consulting Engineers
 Rochester, Pennsylvania

Legend	
Property line	Original lot line
Edge of pavement or roadway	Deed lot number
Corporation line	Parcel or index number
District line	Improvement
County line	Railroad

Revisions					
1	6-3-67	9	OGIS	2/1/93	DSH
2	11-27-78	10	OGIS	12/12/93	SAJ
3	REV. TO 7-1-83	11	O.G.I.S	4-1-96	J.E.B
4	7-1-84	12	SLS INC.	- DDC	5/97
5	Revised to	13	SLS INC.	3/4/98	JWM
6	July, 1986	14	SLS INC.	1/28/99	JWM
7	OGIS	15	SLS INC.	3/03/00	JAW
8	OGIS	16	ESI	2/2/01	REK



TUCKER COUNTY
 STATE OF WEST VIRGINIA
 Office of Assessor

DISTRICT **DRY FORK**
SHEET NO: 430
 Date, Aerial Photography: November, 1961 Date, Map: Dec, 1962
 Photo No: Scale: 1" = 400'