

227 228  
247 248

P/O 227 - 2

228 229  
248 249

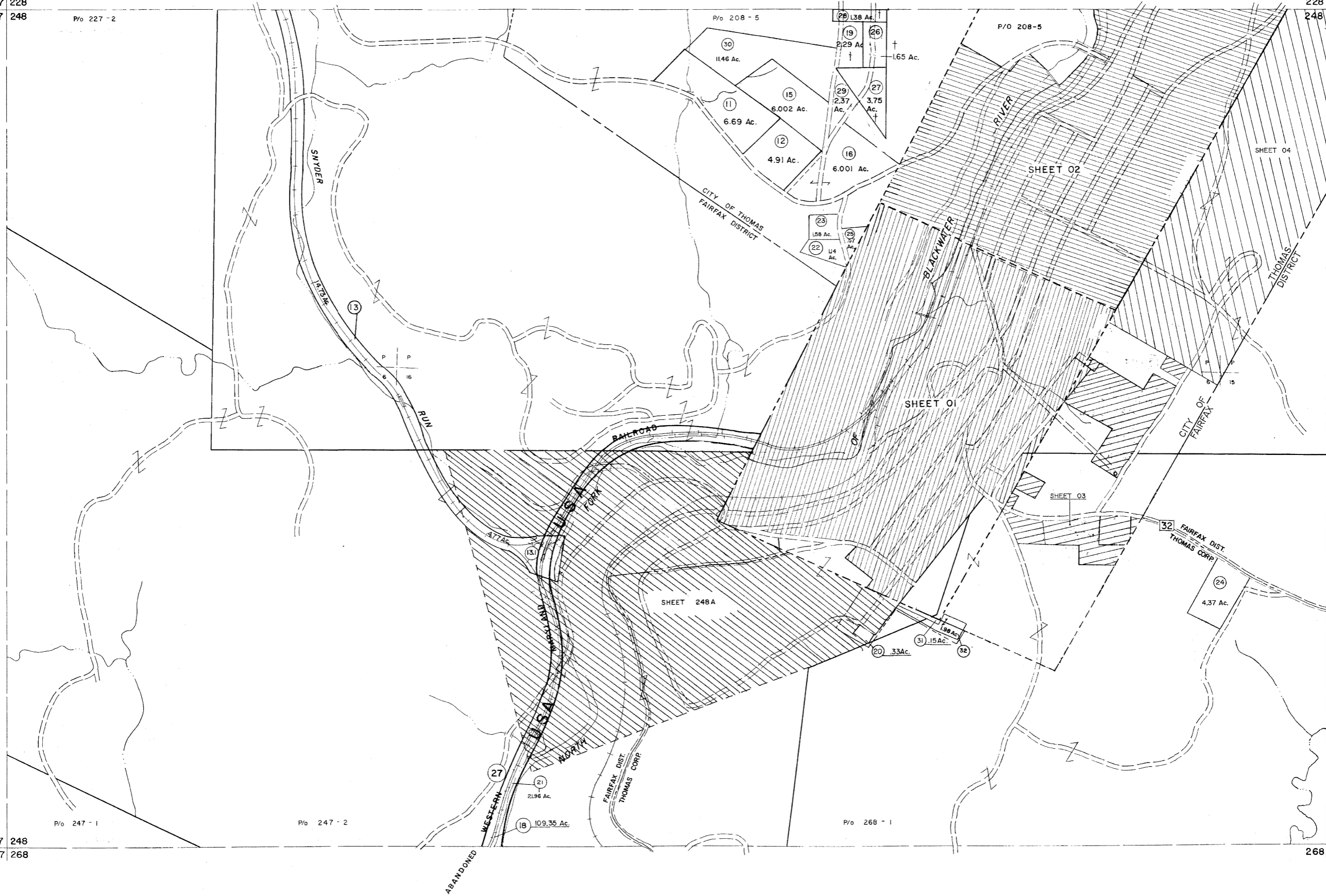
247 248  
267 268

P/O 247 - 1

P/O 247 - 2

P/O 268 - 1

249  
268 269



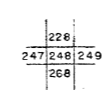
Legend

|                             |       |                        |         |
|-----------------------------|-------|------------------------|---------|
| Property line               | ————— | Original lot line      | -----   |
| Edge of pavement or roadway | ----- | Dead lot number        | (15)    |
| Corporation line            | ----- | Parcel or index number | (27)    |
| District line               | ----- | Improvement            | o       |
| County line                 | ----- | Railroad               | —+—+—+— |

Revisions

|   |                |      |    |                     |        |     |         |       |
|---|----------------|------|----|---------------------|--------|-----|---------|-------|
| 1 | 11-27-78       | T.C. | 9  | O.G.I.S. 4-1-96     | J.E.B. | 17  | 6-27-02 | ++4.5 |
| 2 | REV. TO 7-1-86 | NCS  | 11 | SLS INC. - DDC 5/97 |        | 18  | 6-21-09 | ++4.5 |
| 3 | REV. TO 3-1-89 | REB  | 12 | SLS INC. 2/23/98    | J.W.M. | 20  |         |       |
| 4 | OGIS 1/1/91    | DSH  | 13 | SLS INC. 1/27/99    | DSW    | 21  |         |       |
| 5 | OGIS 3-19-92   | TL   | 14 | SLS INC. 3/1/00     | J.W.M. | 22  |         |       |
| 6 | OGIS 1/25/93   | DSH  | 15 | ESI                 | 2/8/02 | REK | 23      |       |
| 7 | OGIS 2-95      | HD   | 16 | 3/21/05             | S.B.H. | 24  |         |       |

KEY MAP



For Tax Purposes Only  
 Prepared by  
**MICHAEL BAKER, JR., INC.**  
 Consulting Engineers  
 Rochester, Pennsylvania

**TUCKER COUNTY**  
 STATE OF WEST VIRGINIA  
 Office of Assessor

DISTRICT  
**FAIRFAX - DAVIS**

SHEET NO: 248

Date, Aerial Photography: November, 1961  
 Date, Map: Dec. 1962  
 Photo No: \_\_\_\_\_  
 Scale: 1" = 400'