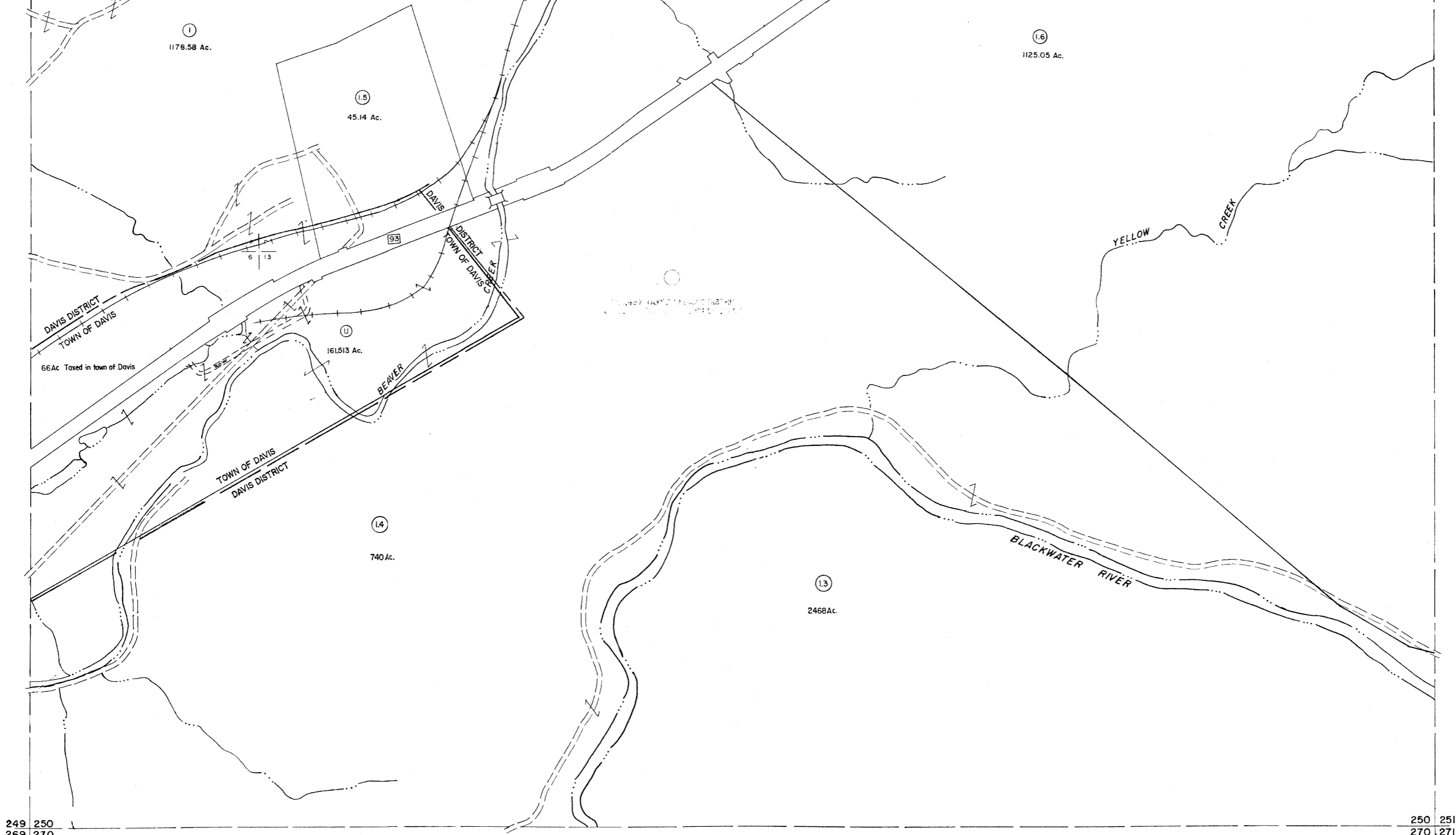


229 230
249 250

230 231
250 251



249 250
269 270

250 251
270 271

For Tax Purposes Only

Prepared by
MICHAEL BAKER, JR., INC.
Consulting Engineers
Rochester, Pennsylvania

Legend

| | | | |
|-----------------------------|-----------|------------------------|------|
| Property line | — | Original lot line | — |
| Edge of pavement or roadway | - - - | Dead lot number | (15) |
| Corporation line | - - - - | Parcel or index number | (99) |
| District line | - - - - - | Improvement | o |
| County line | - - - - - | Railroad | —+— |

Revisions

| | | | | | |
|---|------------------|--------|---------|-----|----|
| 1 | Revised 6-7-88 | 9 | 6-22-02 | HAS | 17 |
| 2 | REV. TO 3-1-89 | R.E.S. | | | 18 |
| 3 | SLS INC. 2/23/98 | JWM | | | 19 |
| 4 | SLS INC. 3/2/00 | JWM | | | 20 |
| 5 | H&S 2/19/04 | | | | 21 |
| 6 | 3/21/05 | S&H | | | 22 |
| 7 | 3/28/06 | S&H | | | 23 |
| 8 | 3/24/07 | S&H | | | 24 |

KEY MAP



TUCKER COUNTY
STATE OF WEST VIRGINIA
Office of Assessor

DISTRICT
DAVIS

SHEET NO: 250

Date, Aerial Photography: Nov. 1961
Photo No: _____
Date, Map: Dec. 1962
Scale: 1" = 400'