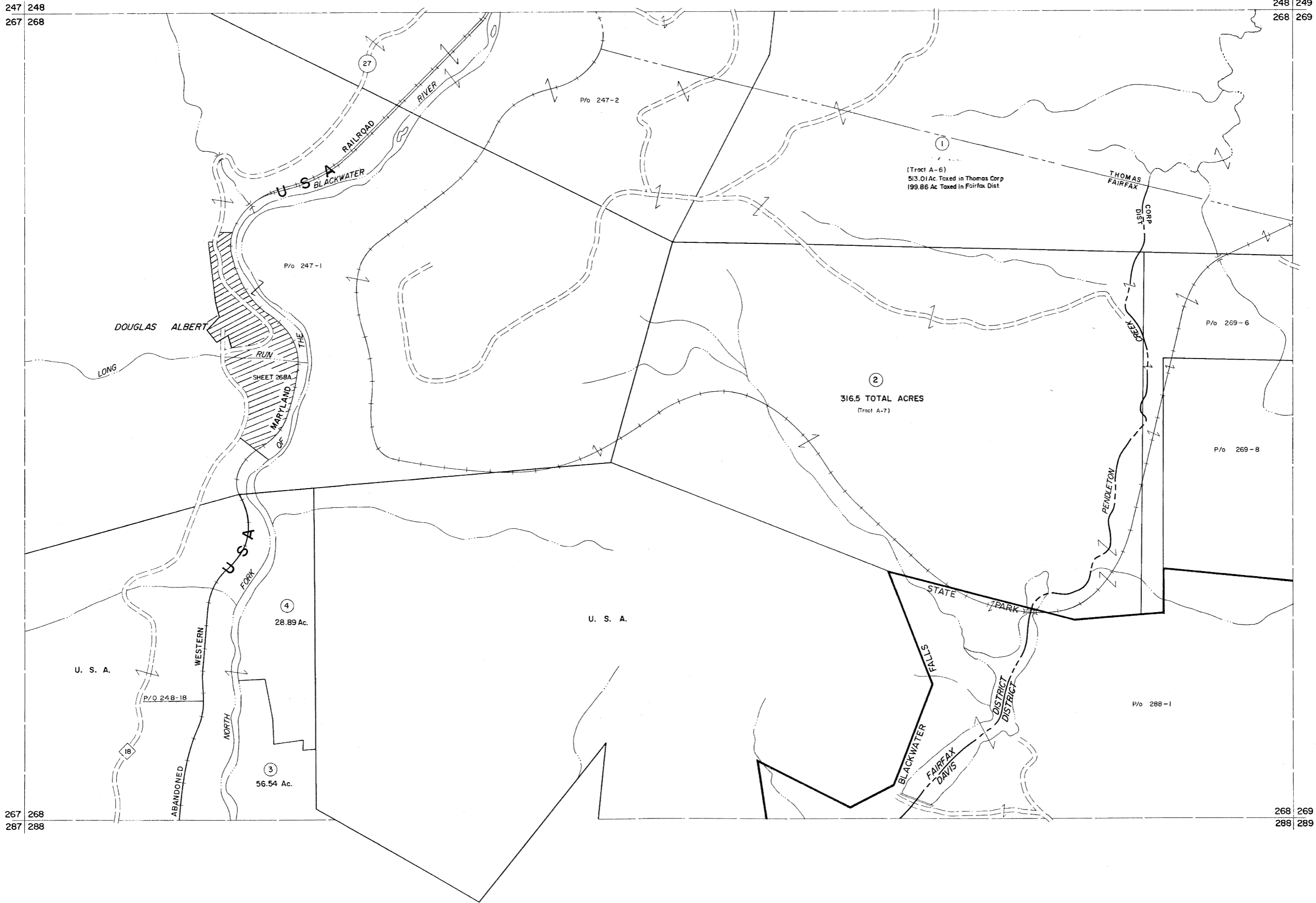


247 248
267 268

248 249
268 269



267 268
287 288

268 269
288 289

For Tax Purposes Only

Prepared by
MICHAEL BAKER, JR., INC.
Consulting Engineers
Rochester, Pennsylvania

Legend	
Property line	Original lot line
Edge of pavement or roadway	Deed lot number
Corporation line	Parcel or Index number
District line	Improvement
County line	Railroad

Revisions			
1	11-27-78	T.G.	9
2	Revised 7-1-83	SLS INC.	10
3	July, 1986	ESL	11
4	Rev. to 3-1-89	R.E.B.	12
5	OGIS 1/26/93	DSH	13
6	OGIS 12/12/93	SAJ	14
7	OGIS 2-95	HD	15
8	OGIS 4-1-96	J.E.B.	16



TUCKER COUNTY
STATE OF WEST VIRGINIA
Office of Assessor

DISTRICT
FAIRFAX DAVIS

SHEET NO: 268

Date, Aerial Photography: November, 1961 Date, Map: Dec., 1962
Photo No: Scale: 1" = 400'