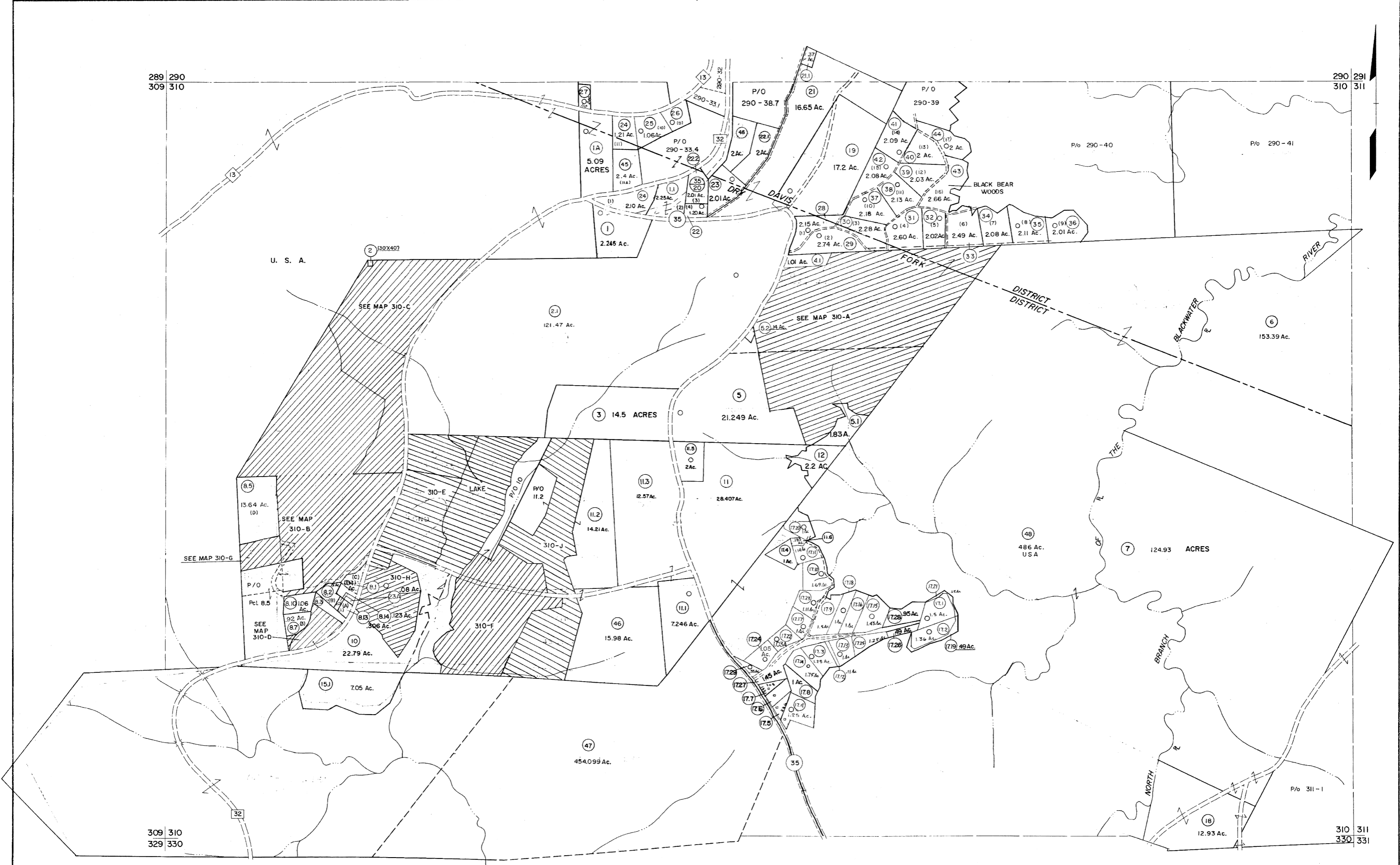


289 290
309 310

290 291
310 311

309 310
329 330

310 311
330 331



For Tax Purposes Only

Prepared by
MICHAEL BAKER, JR., INC.
Consulting Engineers
Rochester, Pennsylvania

Legend

Property line	---	Original lot line	---
Edge of pavement or roadway	---	Dead lot number	(15)
Corporation line	---	Parcel or index number	(2)
District line	---	Improvement	o
County line	---	Railroad	---

Revisions

1	6-5-75	JC	9	OGIS	1/4/91	DSH	17	SLS INC.	1/28/99	DSW
2	11-27-78	OG	10	OGIS	3-19-92	TL	18	SLS INC.	3/2/00	JWM
3	Revised to 7-1-84	DL	11	OGIS	1/30/93	DSH	19	ESI	2/1/01	REK
4	7-1-84	L.E.S.	12	OGIS	12/11/93	SAJ	20	ESI	2/8/02	REK
5	Revised to 7-1-84	DL	13	OGIS	2-95	HD	21	ESI	2/20/03	REK
6	July, 1986	TRL	14	O.G.I.S.	4-1-96	J.E.B.	22	H&S	2/19/04	
7	Revised to 7-1-87	DL	15	SLS INC.	- DDC	5/97	23	3/21/05	S.B.H.	
8	Revised to 3-1-89	R.E.B.	16	SLS INC.	- DDC	7/97	24	3/24/07	S.B.H.	

6-22-08 44.5
6-22-09 44.5
KEY MAP

290
309 310 311
330

TUCKER COUNTY
STATE OF WEST VIRGINIA
Office of Assessor

DISTRICT

DAVIS
DRY FORK

SHEET NO: 310

Date, Aerial Photography: November, 1961 Date, Map: Dec., 1962
Photo No: Scale: 1" = 400'