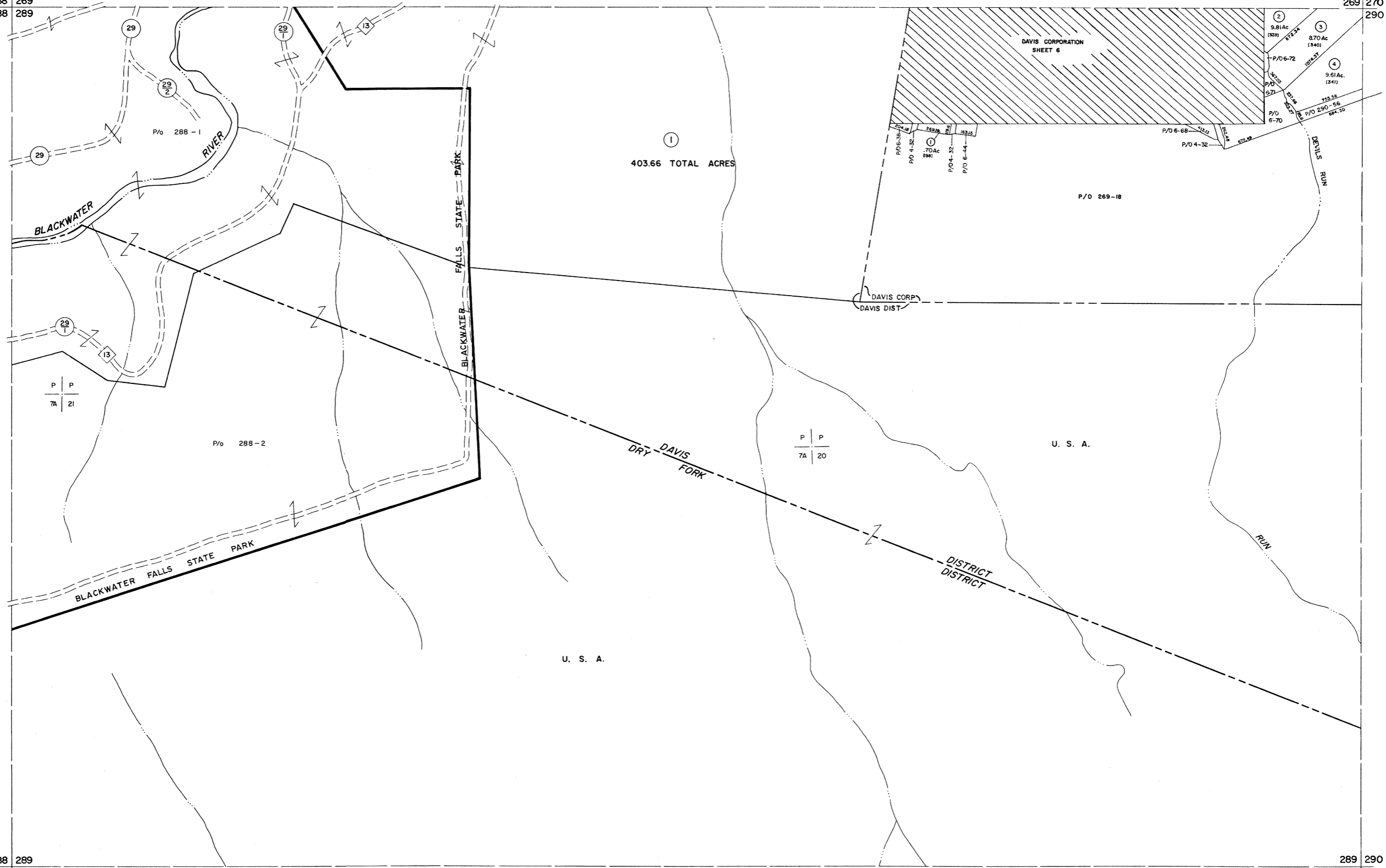


268 269  
288 289

269 270  
290

288 289  
308 309

289 290  
309 310



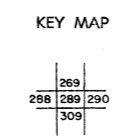
For Tax Purposes Only  
 Prepared by  
**MICHAEL BAKER, JR., INC.**  
 Consulting Engineers  
 Rochester, Pennsylvania

**Legend**

Property line	—————	Original lot line	-----
Edge of pavement or roadway	-----	Deed lot number	-----
Corporation line	-----	Parcel or index number	(15)
District line	-----	Improvement	○
County line	-----	Railroad	—+—+—

**Revisions**

1	Revised to 7-1-88-20	9	17
2	OGIS 1/1/91 DSH	10	18
3	OGIS 1/29/93 DSH	11	19
4	6-22-08 H+S	12	20
5	6-21-09 H+S	13	21
6		14	22
7		15	23
8		16	24



**TUCKER COUNTY**  
 STATE OF WEST VIRGINIA  
 Office of Assessor

DISTRICT **DAVIS DRY FORK**  
**SHEET NO: 289**  
 Date, Aerial Photography: November, 1961 Date, Map: Dec. 1962  
 Photo No: Scale: 1" = 400'