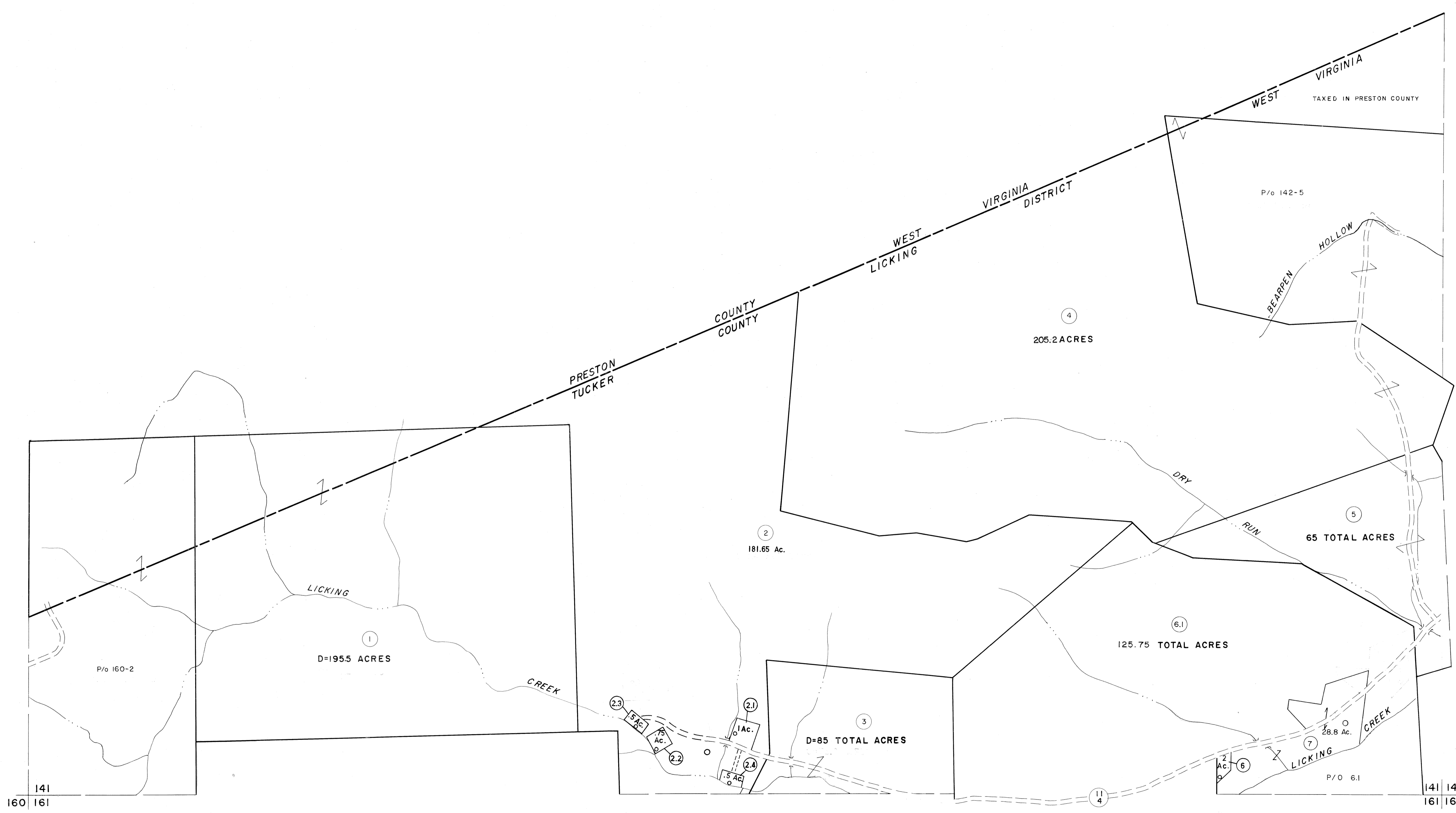


141

122
141 142

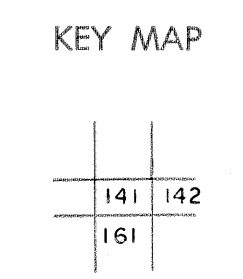


For Tax Purposes Only

Prepared by
MICHAEL BAKER, JR., INC.
Consulting Engineers
Rochester, Pennsylvania

Legend	
Property line	Original lot line
Edge of pavement or roadway	Deed lot number
Corporation line	Parcel or index number
District line	Improvement
County line	Railroad

Revisions	
1 Revised to 7-1-83	9
2 7-1-84 L.E.S.	10
3 REV. TO 7-1-86 NCS	11
4 OGIS 12/29/90 DSH	12
5 OGIS 3-19-92 TL	13
6 OGIS 4-95 HD	14
7	15
8	16



TUCKER COUNTY
STATE OF WEST VIRGINIA
Office of Assessor

DISTRICT
LICKING
SHEET NO: 141
Date, Aerial Photography: November, 1961 Date, Map: Dec, 1962 Photo No: Scale: 1" = 400'