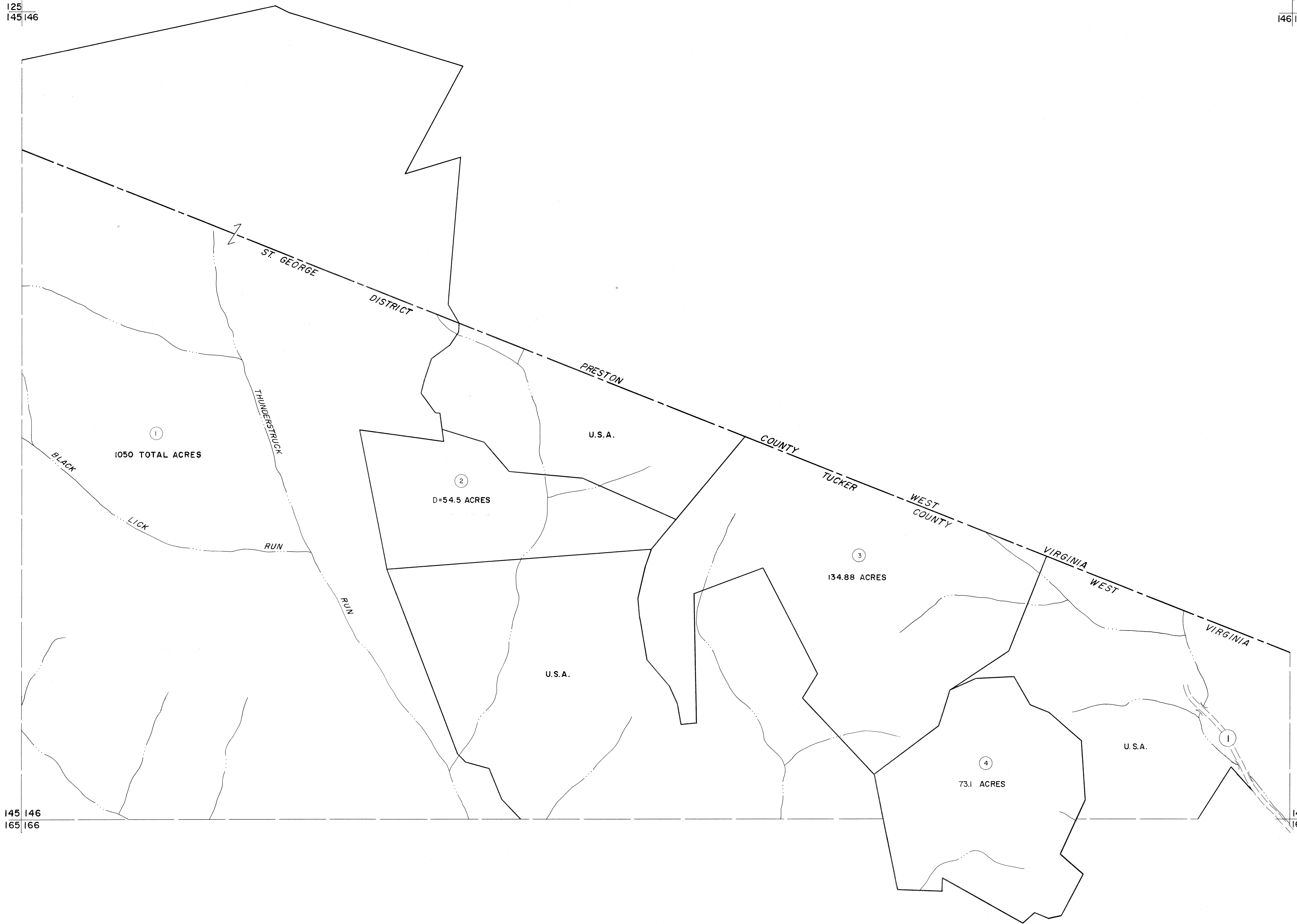


125
145 146

146 147



145 146
165 166

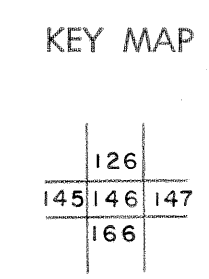
147
167

For Tax Purposes Only

Prepared by
MICHAEL BAKER, JR., INC.
Consulting Engineers
Rochester, Pennsylvania

| Legend | |
|-----------------------------|------------------------|
| Property line | Original lot line |
| Edge of pavement or roadway | Deed lot number |
| Corporation line | Parcel or index number |
| District line | Improvement |
| County line | Railroad |

| Revisions | | | |
|-----------|------|---------|-----|
| 1 | OGIS | 1/6/91 | DSH |
| 2 | OGIS | 3-19-92 | TL |
| 3 | | | |
| 4 | | | |
| 5 | | | |
| 6 | | | |
| 7 | | | |
| 8 | | | |



TUCKER COUNTY
STATE OF WEST VIRGINIA
Office of Assessor

| | |
|---------------------------|----------------|
| DISTRICT | ST. GEORGE |
| SHEET NO: | 146 |
| Date, Aerial Photography: | November, 1961 |
| Map: | Dec. 1962 |
| Photo No: | |
| Scale: | 1" = 400' |