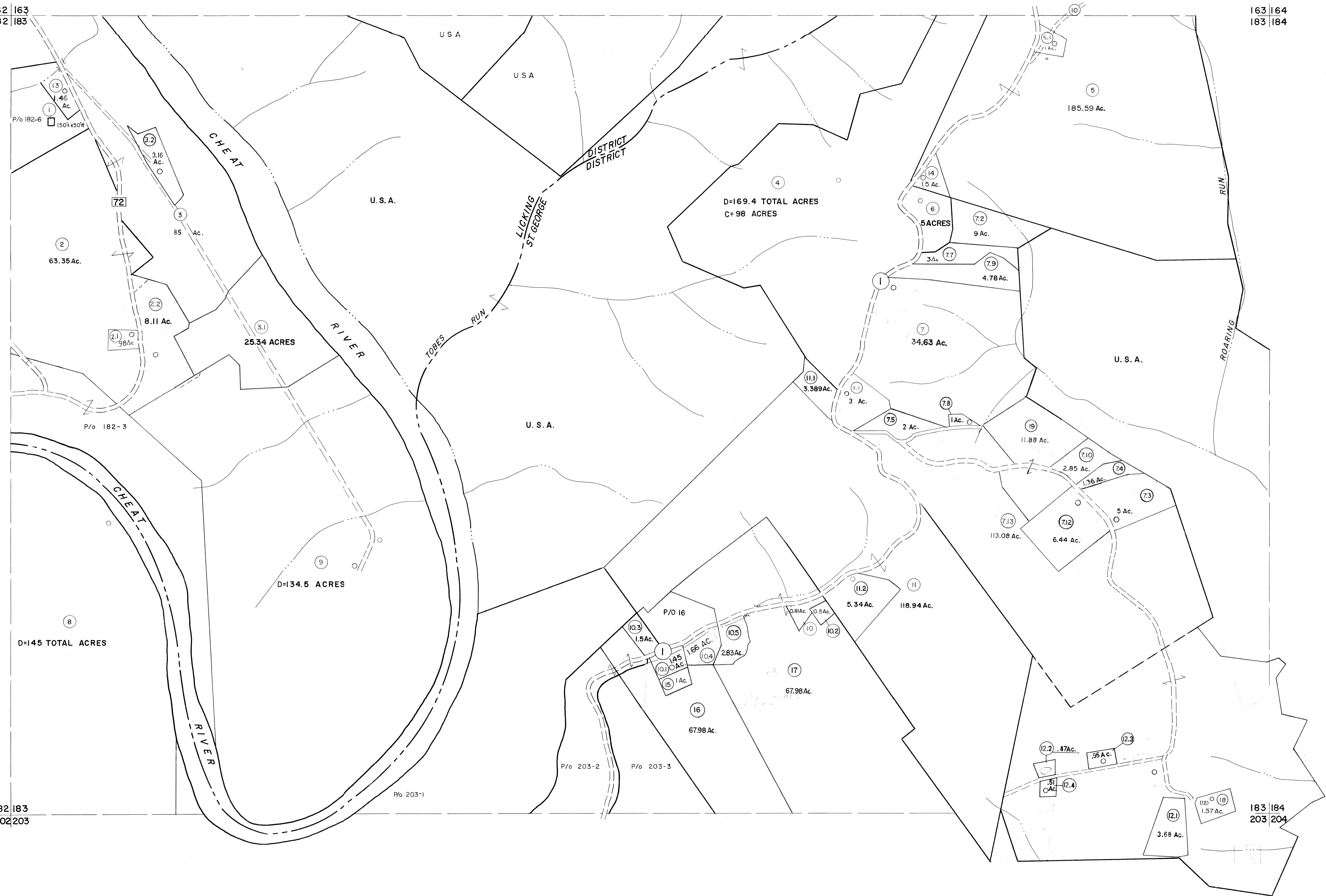


162 | 163
182 | 183

163 | 164
183 | 184



182 | 183
202 | 203

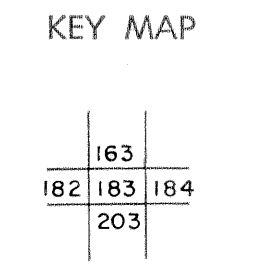
183 | 184
203 | 204

For Tax Purposes Only

Prepared by
MICHAEL BAKER, JR., INC.
Consulting Engineers
Rochester, Pennsylvania

Legend	
Property line	———
Edge of pavement or roadway	———
Corporation line	———
District line	———
County line	———
Original lot line	———
Deed lot number	(15)
Parcel or index number	(22)
Improvement	○
Railroad	———

Revisions	
1	6-6-75 J.C.
2	11/20/78 D.G.
3	7-1-83 C.R.
4	7-1-84 L.E.S.
5	REV TO 7-1-86 NCS
6	REV TO 7-1-87 D.P.
7	REV TO 3-1-89 NCS
8	OGIS 12/30/90 DSH
9	OGIS 3-19-92 TL
10	OGIS 1/24/93 DSH
11	OGIS 12/11/93 SAJ
12	SLS INC. 2/19/98 DSW
13	HAS 2/22/04
14	3/21/05 S&H
15	3/24/07 S&H
16	
17	
18	
19	
20	
21	
22	
23	
24	



TUCKER COUNTY
STATE OF WEST VIRGINIA
Office of Assessor

DISTRICT LICKING ST. GEORGE

SHEET NO: 183

Date, Aerial Photography: Nov., 1961 Date, Map: Dec., 1962
Photo No: Scale: 1" = 400'