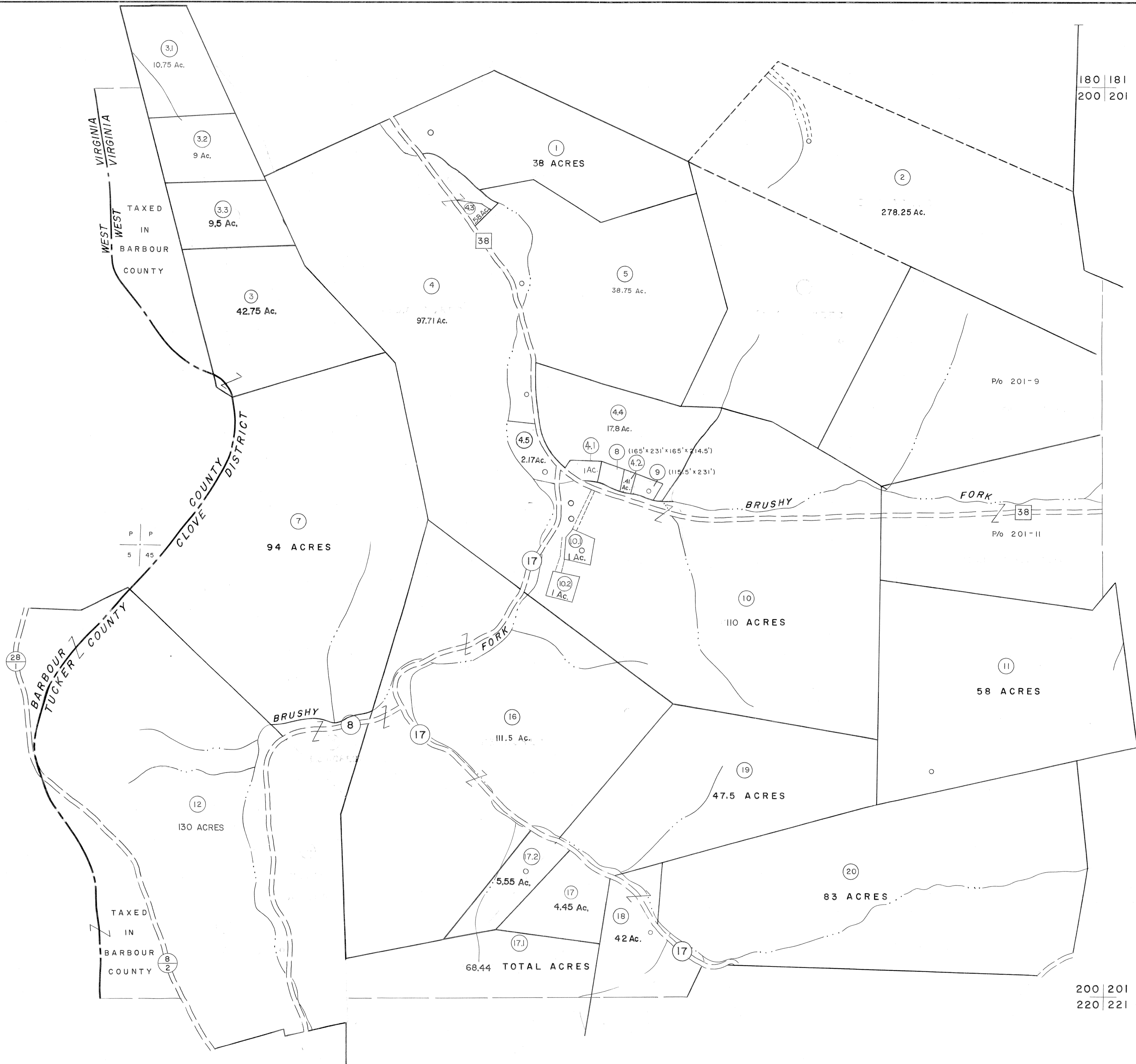


180
200

180 181
200 201



200
220

200 201
220 221

For Tax Purposes Only

Prepared by
MICHAEL BAKER, JR., INC.
Consulting Engineers
Rochester, Pennsylvania

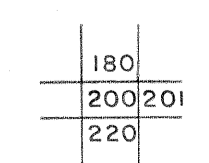
Legend

Property line	—	Original lot line	- - - - -
Edge of pavement or roadway	—	Deed lot number	(15)
Corporation line	—	Parcel or index number	(16)
District line	—	Improvement	(17)
County line	—	Railroad	(18)

Revisions

1	6-3-64	9	SLS INC. - DDC 5/97	17
2	6-3-75	10	SLS INC. 2/19/98 DSW	18
3	12/1/83	11	SLS INC. 1/27/99 DSW	19
4	12/1/85	12	ESI 2/7/02 REK	20
5	OGIS 12/30/90 DSH	13	H&S 2/22/04	21
6	OGIS 3-19-92 TL	14	3/21/05 S&H	22
7	OGIS 2-95 HD	15		23
8	O.G.I.S 4-1-96 J.E.B	16		24

KEY MAP



TUCKER COUNTY
STATE OF WEST VIRGINIA
Office of Assessor

DISTRICT

CLOVER

SHEET NO: 200

Date, Aerial Photography: Nov, 1961 Date, Map: Dec, 1962
Photo No: Scale: 1"=400'