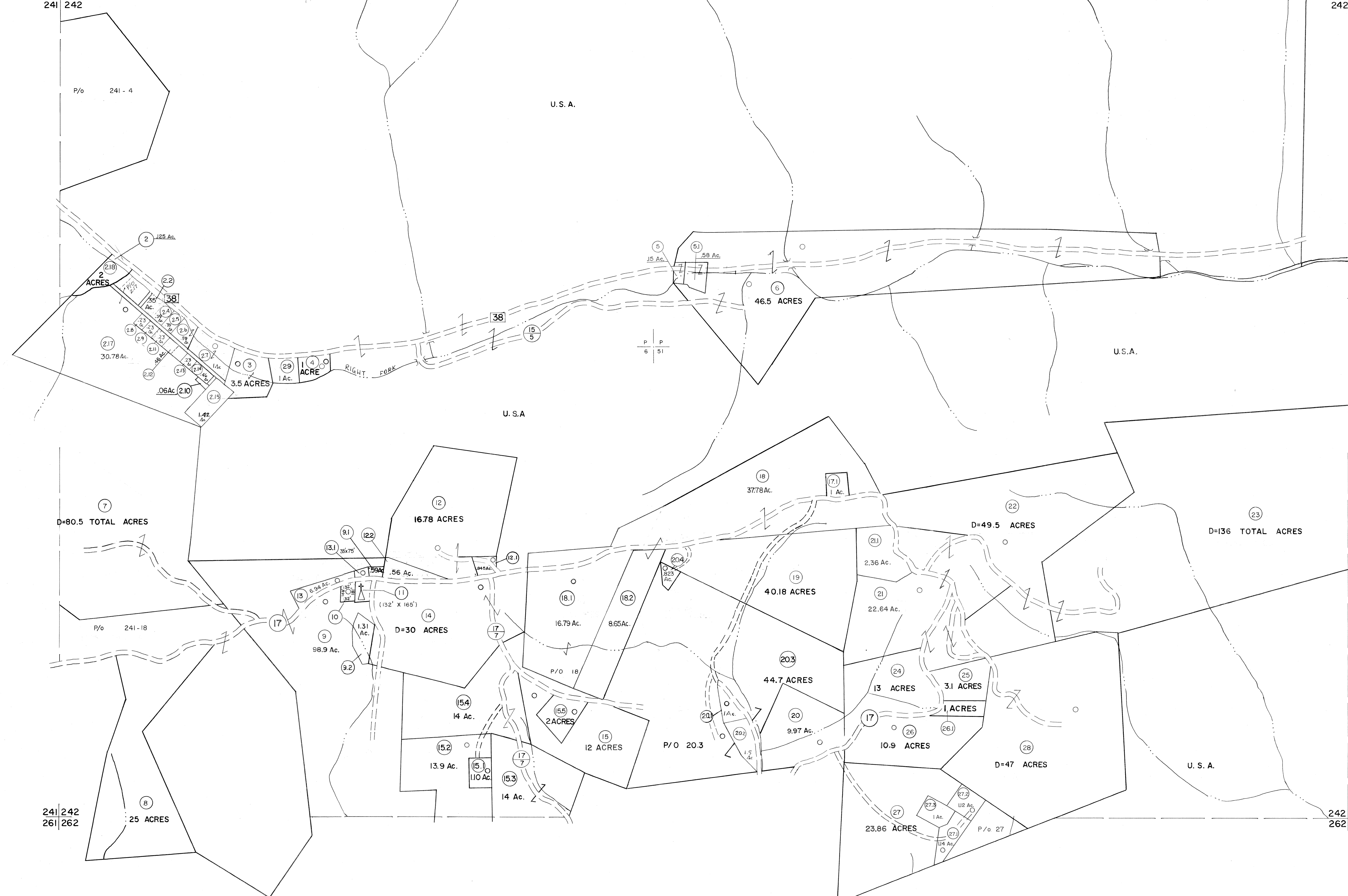


221 222  
241 242

222 223  
242 243



For Tax Purposes Only  
Prepared by  
MICHAEL BAKER, JR., INC.  
Consulting Engineers  
Rochester, Pennsylvania

Legend	
Property line	—————
Edge of pavement or roadway	—————
Corporation line	—————
District line	—————
County line	—————
Original lot line	- - - - -
Deed lot number	(15)
Parcel or index number	(2)
Improvement	○
Railroad	—+—+—+—

Revisions			
1	JUNE 75 PAM	9	OGIS 3-19-92 TL 17
2	11-21-78 DG	10	OGIS 1/25/93 DSH 18
3	Revised to 7-1-88	11	OGIS 12/11/93 SAJ 19
4	7-1-84 L.E.S.	12	O.G.I.S 4-1-96 J.E.B 20
5	Revised to 7-1-85	13	SLS INC. - DDC 5/97 21
6	REV. TO 7-1-86 NCS	14	SLS INC. 2/23/98 JWM 22
7	REV. TO 3-1-89 R.E.B.	15	SLS INC. 1/27/99 DSW 23
8	OGIS 12/31/90 DSH	16	ESI 1/31/01 REK 24

KEY MAP

222	242
241	243
262	263

TUCKER COUNTY  
STATE OF WEST VIRGINIA  
Office of Assessor

DISTRICT CLOVER  
SHEET NO: 242  
Date, Aerial Photography: November, 1961 Date, Map: Dec, 1962  
Photo No: Scale: 1" = 400'