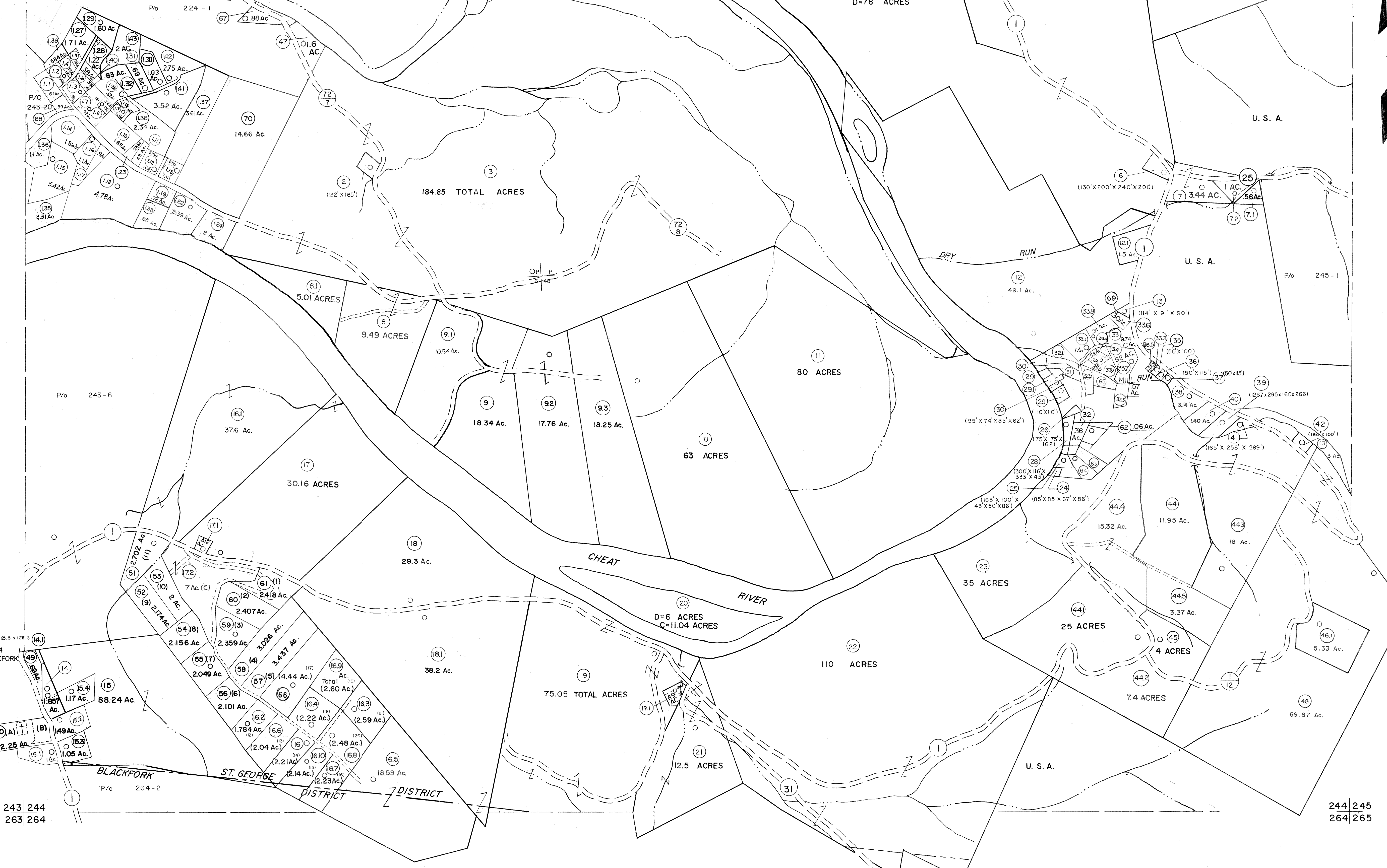


223 224
243 244

224 225
244 245



P14,15,15.1,15.2,15.3,15.4
ARE TAXED IN BLACKFORK
DISTRICT

BLACKFORK
ST. GEORGE
DISTRICT

243 244
263 264

244 245
264 265

For Tax Purposes Only

Prepared by
MICHAEL BAKER, JR., INC.
Consulting Engineers
Rochester, Pennsylvania

Legend	
Property line	Original lot line
Edge of pavement or roadway	Deed lot number
Corporation line	Parcel or index number
District line	Improvement
County line	Railroad

Revisions	
1 10-3-63	9 Revised to 7-1-87
2 6-3-64	10 REV. TO 3-1-89 R.E.B.
3 6-3-75	11 OGIS 12/31/90 DSH
4 11/21/78	12 OGIS 3-19-92 TL
5 Revised to 7-1-88	13 OGIS 1/25/93 DSH
6 7-1-84	14 OGIS 12/11/93 SAJ
7 Revised to 7-1-85	15 OGIS 2-95 HD
8 REV. TO 7-1-86	16 O.G.I.S 4-1-96 J.E.B.
	17 SLS INC. - DDC 5/97
	18 SLS INC. 2/23/98 JWM
	19 SLS INC. 1/27/99 DSW
	20 SLS INC. 3/1/00 JWM
	21 ESI 1/31/01 REK
	22 ESI 2/8/02 REK
	23 ESI 2/20/03 REK
	24 H&S 2/19/04

3/21/05 S&H
3/28/06 S&H
KEY MAP
3/24/07 S&H

224
243 244 245
264

TUCKER COUNTY
STATE OF WEST VIRGINIA
Office of Assessor

DISTRICT
**ST. GEORGE
BLACKFORK**

SHEET NO: 244

Date, Aerial Photography: November, 1961 Date, Map: Dec., 1962
Photo No: Scale: 1" = 400'