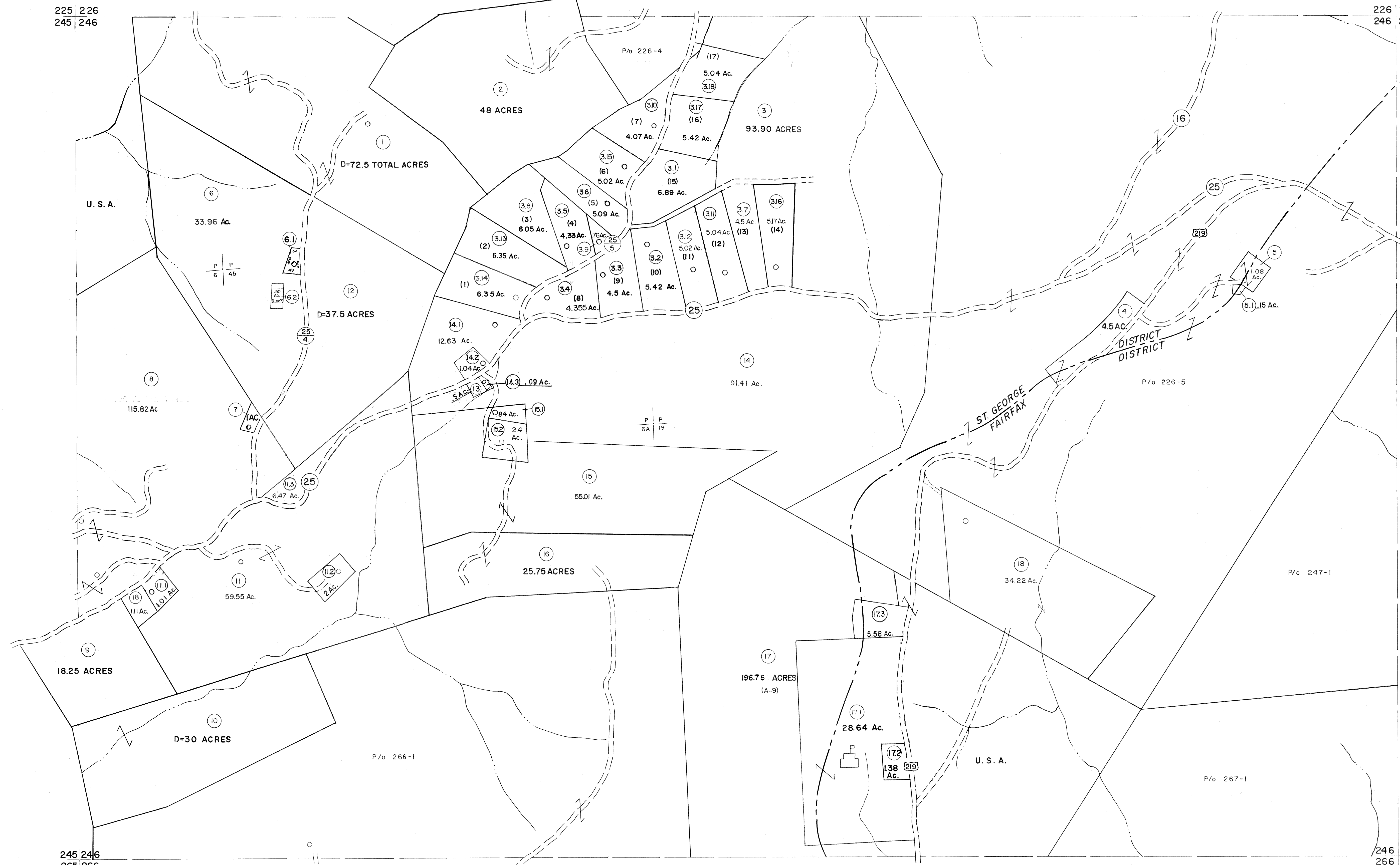


225 226
245 246

226 227
246 247



245 246
265 266

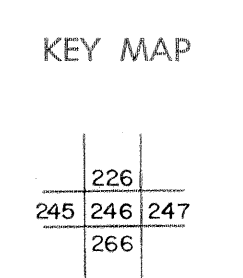
246 247
266 267

For Tax Purposes Only

Prepared by
MICHAEL BAKER, JR., INC.
Consulting Engineers
Rochester, Pennsylvania

| Legend | |
|-----------------------------|------|
| Property line | — |
| Edge of pavement or roadway | — |
| Corporation line | — |
| District line | — |
| County line | — |
| Original lot line | — |
| Dead lot number | (15) |
| Parcel or index number | (25) |
| Improvement | o |
| Railroad | — |

| Revisions | |
|-----------|-----------------------|
| 1 | 11-21-78 T.G. |
| 2 | Revised to 7-1-83 |
| 3 | 7-1-84 L.E.S. |
| 4 | REV. TO 7-1-86 NCS |
| 5 | Revised to 7-1-87 |
| 6 | REV. TO 3-1-89 R.E.B. |
| 7 | OGIS 3-19-92 TL |
| 8 | OGIS 12/11/93 SAJ |
| 9 | OGIS 2-95 HD |
| 10 | O.G.I.S 4-1-96 J.E.B |
| 11 | SLS INC. - DDC 5/97 |
| 12 | SLS INC. 2/23/98 JWM |
| 13 | ESI 2/8/02 REK |
| 14 | OGIS 12/31/90 DSH |
| 15 | ESI 2/20/03 REK |
| 16 | HAS 2/19/03 |
| 17 | 3/21/05 S&H |
| 18 | 3/24/07 S&H |
| 19 | |
| 20 | |
| 21 | |
| 22 | |
| 23 | |
| 24 | |



TUCKER COUNTY
STATE OF WEST VIRGINIA
Office of Assessor

DISTRICT ST. GEORGE FAIRFAX

SHEET NO: 246

Date, Aerial Photography: Nov., 1961 Date, Map: Dec., 1962
Photo No: Scale: 1" = 400'