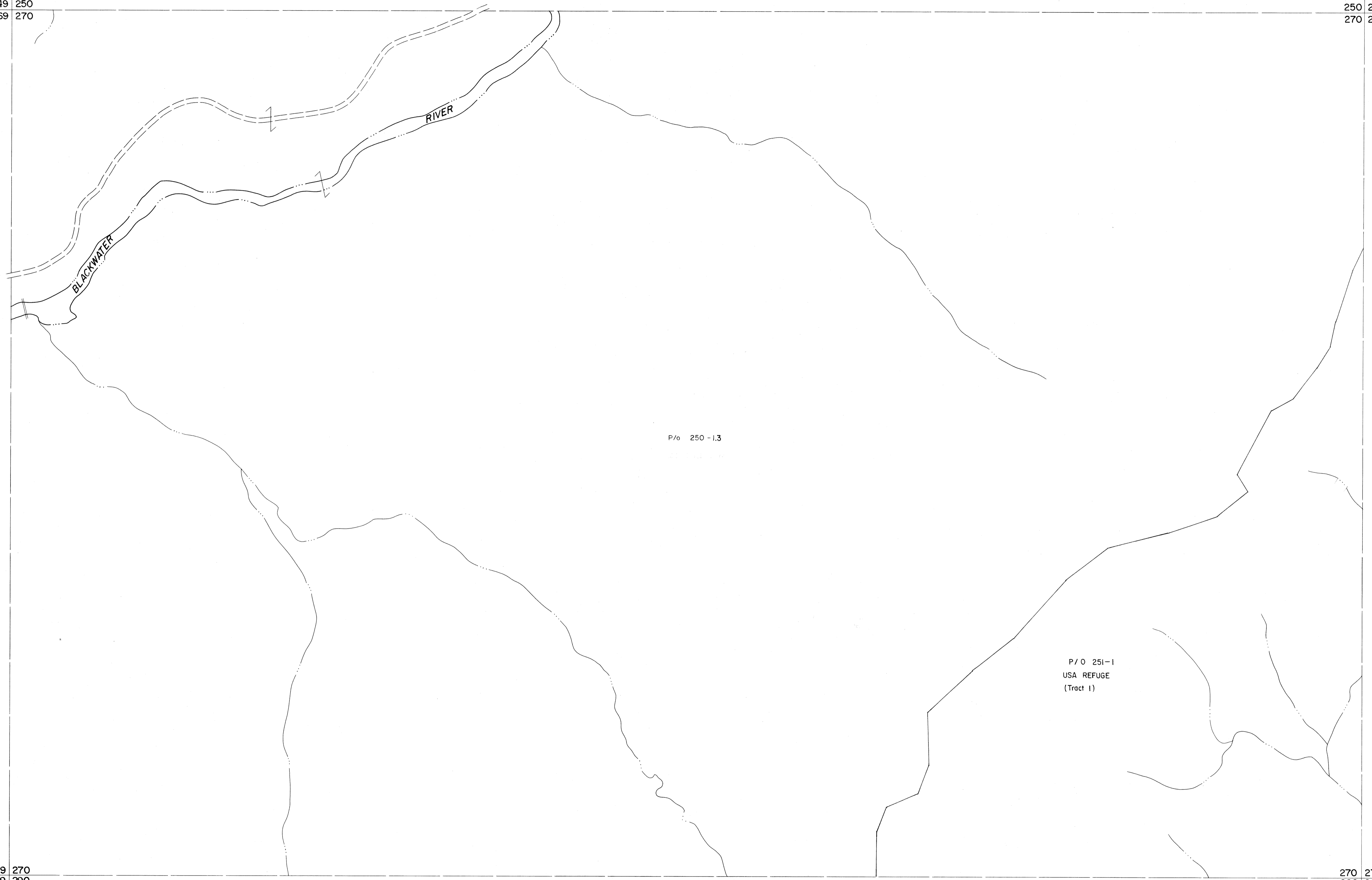


249 250
269 270

250 251
270 271

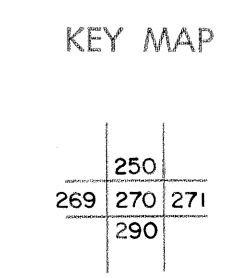


For Tax Purposes Only

Prepared by
MICHAEL BAKER, JR., INC.
Consulting Engineers
Rochester, Pennsylvania

Legend	
Property line	—————
Edge of pavement or roadway	——— ———
Corporation line	-----
District line	- - - - -
County line	-----
Original lot line	-----
Deed lot number	(15)
Parcel or index number	(27)
Improvement	○
Railroad	—+—+—+—

Revisions			
1	Revised to 7-1-89	J.F.	9
2	REV. TO 3-1-89	R.E.B.	10
3	H&S 2/19/04		11
4			12
5			13
6			14
7			15
8			16
			17
			18
			19
			20
			21
			22
			23
			24



TUCKER COUNTY
STATE OF WEST VIRGINIA
Office of Assessor

DISTRICT	DAVIS
SHEET NO: 270	
Date, Aerial Photography: November, 1961	Date, Map: Dec., 1962
Photo No:	Scale: 1" = 400'