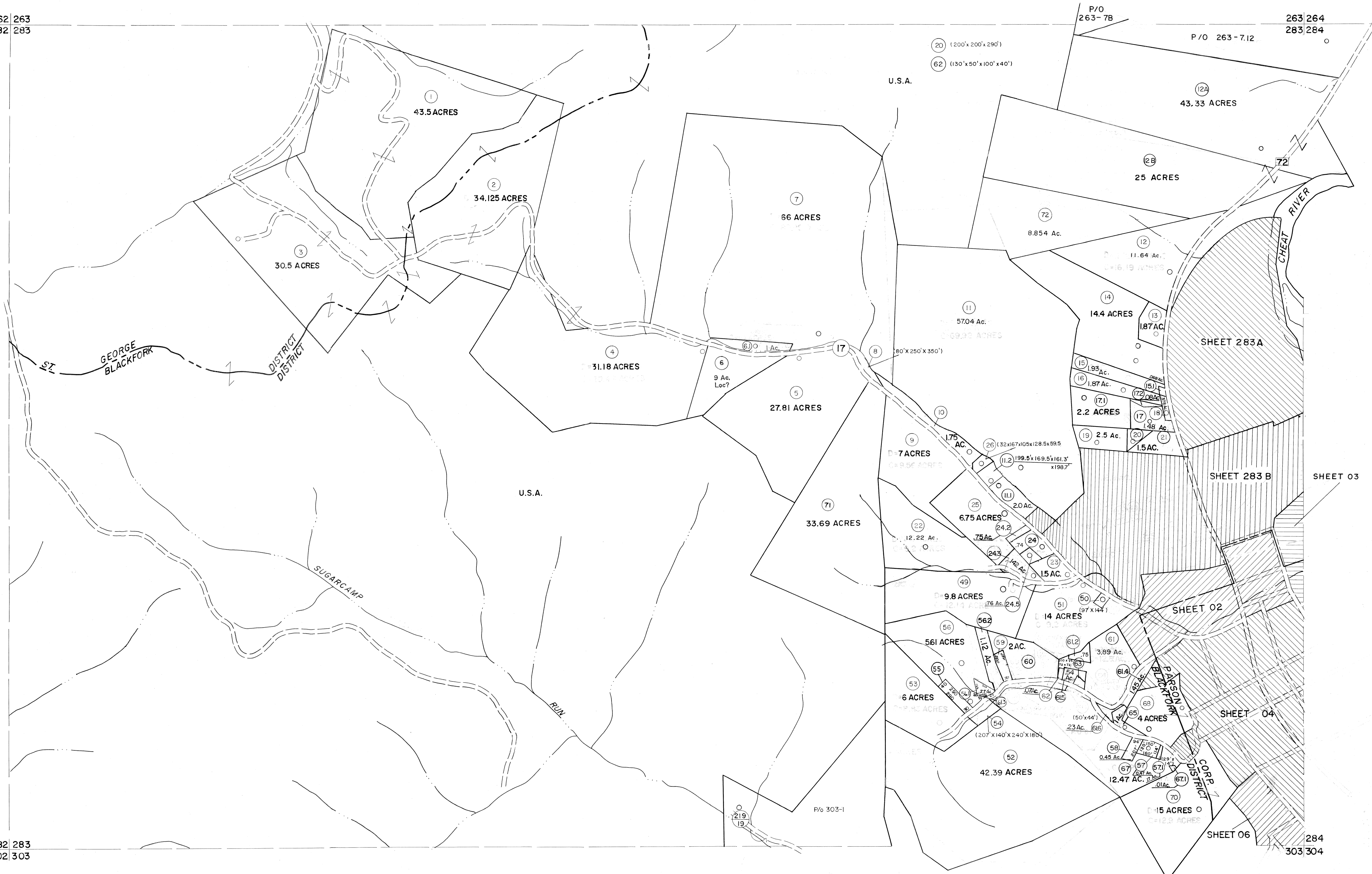


262 263
282 283

263 264
283 284

282 283
302 303

284
303 304



For Tax Purposes Only

Prepared by
MICHAEL BAKER, JR., INC.
Consulting Engineers
Rochester, Pennsylvania

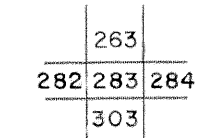
Legend

Property line	—	Original lot line	---
Edge of pavement or roadway	- - -	Dead lot number	(15)
Corporation line	---	Parcel or index number	(59)
District line	---	Improvement	o
County line	---	Railroad	—+—

Revisions

1	10-3-43	9	OGIS	3-19-92	TL	17	ESI	2/8/02	REK
2	6-4-75	10	OGIS	1/27/93	DSH	18	H&S	2/19/04	
3	Revised to 7-1-85	11	OGIS	2-95	HD	19		3/28/06	S&H
4	July 1995	12	O.G.I.S.	4-1-96	J.E.B	20			
5	July 1995	13	SLS INC.	2/23/98	J.W.M	22			
6	Revised to 7-1-87	14	SLS INC.	2/23/98	J.W.M	22			
7	REV. TO 3-1-89	15	E.S.I.	1/31/01	REK	23			
8	OGIS	1/1/91	DSH			24			

KEY MAP



TUCKER COUNTY
STATE OF WEST VIRGINIA
Office of Assessor

DISTRICT

**BLACKFORK
ST. GEORGE**

SHEET NO: 283

Date, Aerial Photography: November, 1962 Date, Map: Dec, 1962
Photo No: Scale: 1" = 400'