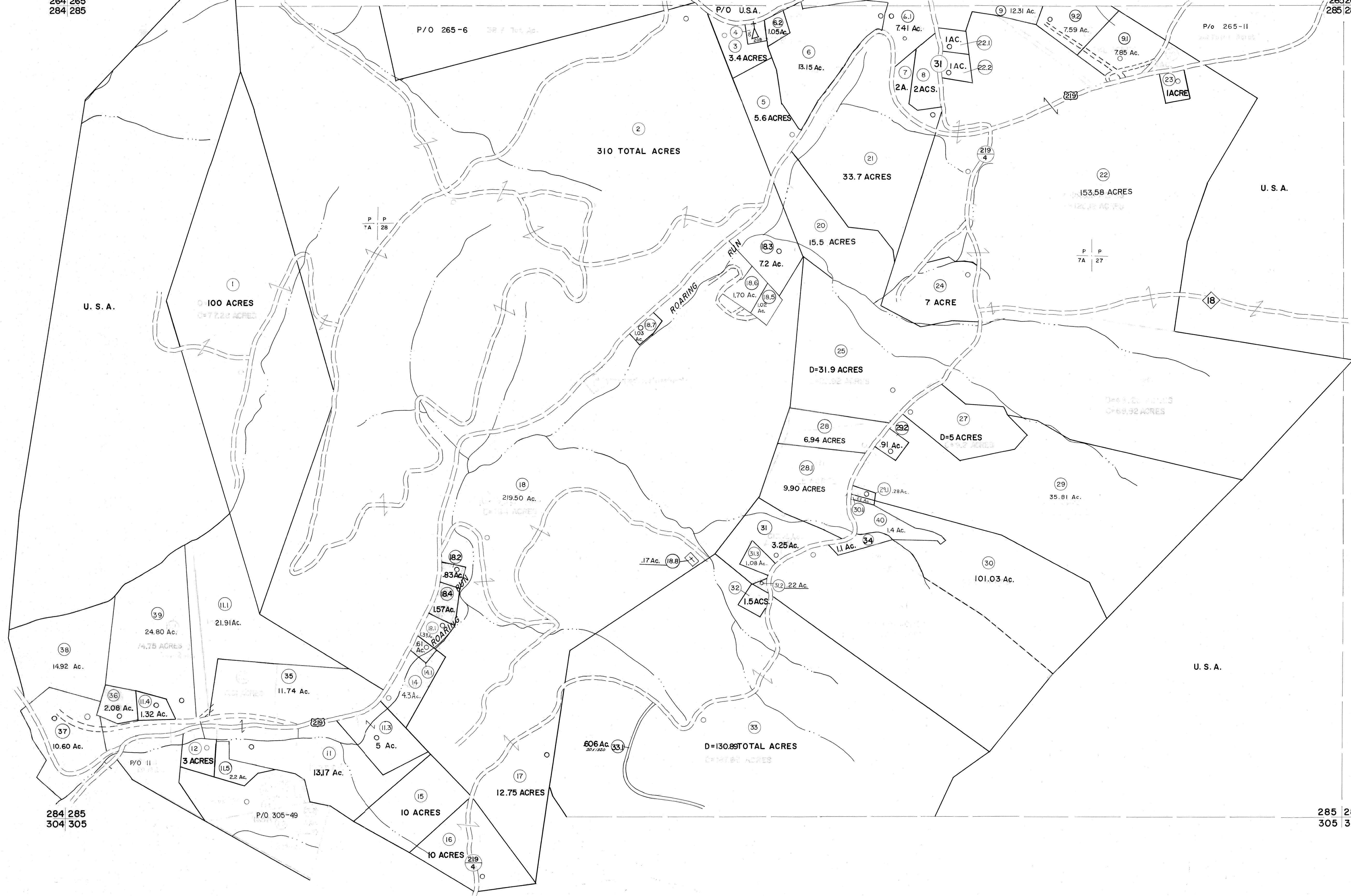


264 265  
284 285

265 266  
285 286



For Tax Purposes Only

Prepared by  
MICHAEL BAKER, JR., INC.  
Consulting Engineers  
Rochester, Pennsylvania

Legend	
Property line	—
Edge of pavement or roadway	—
Corporation line	—
District line	—
County line	—
Original lot line	--- (15)
Dead lot number	(15)
Parcel or index number	(15)
Improvement	○
Railroad	—

Revisions			
1	10-3-63		
2	6-4-75	T.G.	
3	11-29-78	T.G.	
4	Revised to 7-1-85		
5	7-1-84	L.E.S.	
6			
7	Revised to 3-1-89	R.S.	
8	OGIS 1/1/91	DSH	
9	OGIS 3-19-92	TL	17
10	OGIS 12/12/93	SAJ	18
11	O.G.I.S. 4-1-96	J.E.B.	19
12	SLS INC. - DDC 5/97		20
13	SLS INC. 2/27/98	JWM	21
14	SLS INC. 1/27/99	DSW	22
15	SLS INC. 3/2/00	JWM	23
16	ESI 2/1/01	REK	24

KEY MAP

TUCKER COUNTY  
STATE OF WEST VIRGINIA  
Office of Assessor

DISTRICT **BLACKFORK**

SHEET NO: 285

Date, Aerial Photography: November, 1961 Date, Map: Dec, 1962  
Photo No: Scale: 1" = 400'