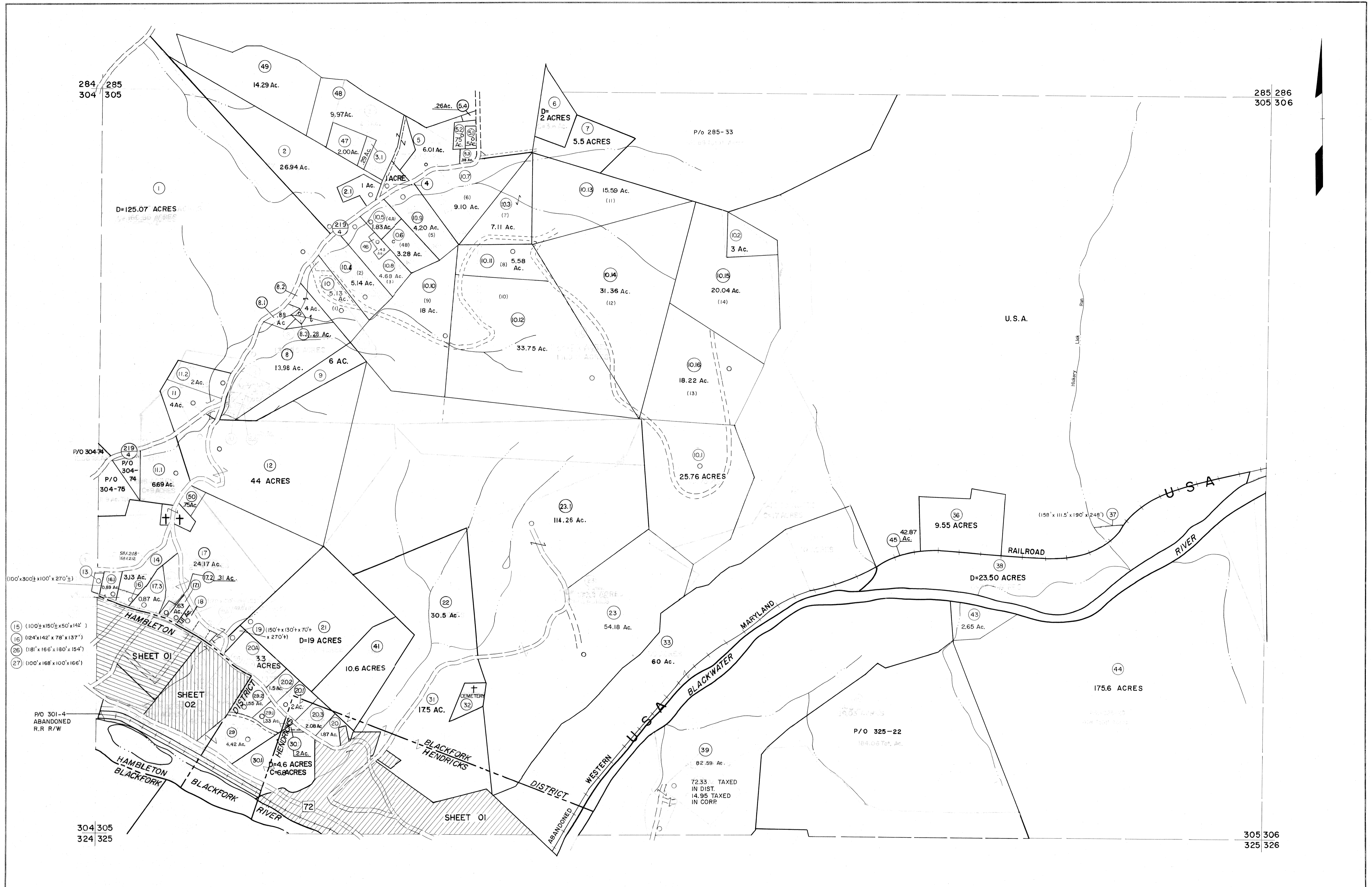


284 285  
304 305

285 286  
305 306

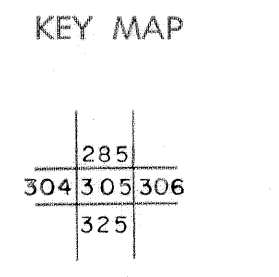


- (15) (100' x 150' x 50' x 142')
- (16) (124' x 142' x 78' x 137')
- (26) (181' x 165' x 180' x 154')
- (27) (100' x 168' x 100' x 166')

For Tax Purposes Only  
 Prepared by  
**MICHAEL BAKER, JR., INC.**  
 Consulting Engineers  
 Rochester, Pennsylvania

Legend	
Property line	Original lot line
Edge of pavement or roadway	Deed lot number
Corporation line	Parcel or index number
District line	Improvement
County line	Railroad

Revisions			
1	10-3-63		
2	6-3-75		
3	11-26-78	BAH	
4	Revised to 7-1-83		
5	Revised to 7-1-85		
6	July, 1986	TRL	
7	Revised to 7-1-87		
8	Revised to 3-1-89	R.L.B.	
9	OGIS 1/4/91	DSH	
10	OGIS 3-19-92	TL	
11	OGIS 1/30/93	DSH	
12	OGIS 12/11/93	SAJ	
13	OGIS 2-95	HD	
14	O.G.I.S. 4-1-96	J.E.B.	
15	SLS INC. - DDC 5/97		
16	SLS INC. 3/3/98	JWM	
17	SLS INC. 1/28/99	DSW	
18	SLS INC. 3/2/00	JWM	
19	ESI 2/1/01	REK	
20	ESI 2/20/02	REK	
21	H&S 2/19/04		
22	3/21/05	S&H	
23	3/24/07	S&H	
24			



**TUCKER COUNTY**  
 STATE OF WEST VIRGINIA  
 Office of Assessor

DISTRICT **BLACKFORK**  
**SHEET NO: 305**  
 Date, Aerial Photography: November, 1961 Date, Map: Dec, 1962  
 Photo No: Scale: 1" = 400'