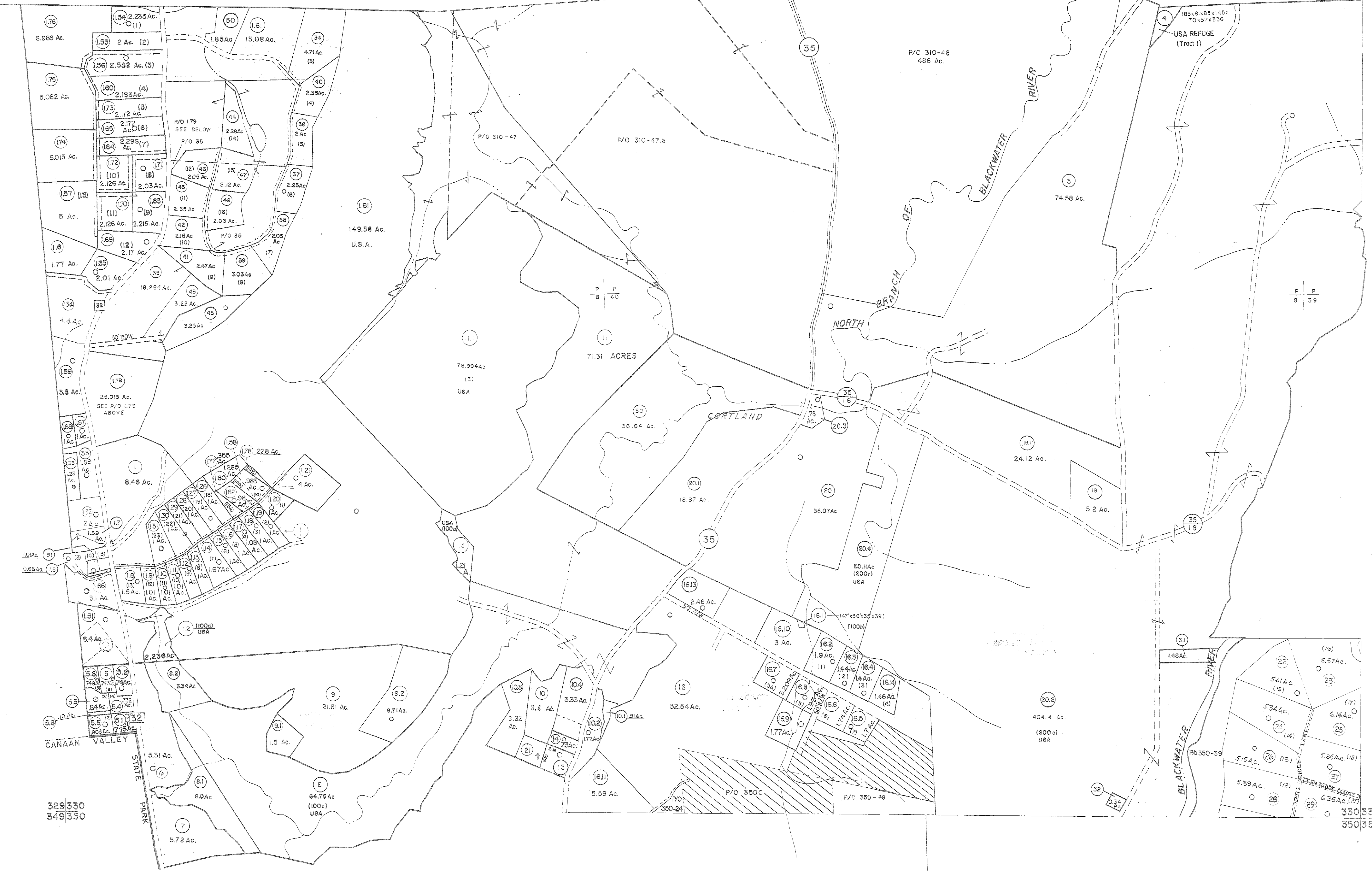


309310
329330

310311
330331



For Tax Purposes Only
 Prepared by
MICHAEL BAKER, JR., INC.
 Consulting Engineers
 Rochester, Pennsylvania

Legend

Property line	—	Original lot line	—
Edge of pavement or roadway	—	Deed lot number	(15)
Corporation line	—	Parcel or index number	(59)
District line	—	Improvement	○
County line	—	Railroad	—

Revisions

1	6-3-66	2	REV. TO 3-1-99	R.E.B.	17	SLS INC.	1/28/99	DSW
2	6-5-75	3	OGIS	1/5/91	DSH	18	SLS INC.	3/2/00 JWM
3	10-7-78	4	OGIS	3-19-92	TL	19	ESI	1/31/01 REK
4	Revised to 7-1-88	5	OGIS	1/30/93	DSH	20	ESI	2/12/02 REK
5	7-1-90	6	OGIS	12/12/93	SAJ	21	ESI	2/20/03 REK
6	Revised to 7-1-85	7	OGIS	2-95	HD	22	HBS	2/19/04
7	July, 1988	8	O.G.I.S.	4-1-98	J.E.B.	23	3/21/05	S.B.H.
8	Revised to 2-1-87	9	SLS INC.	3/3/99	J.W.V.	24	3/28/06	S.B.H.

TUCKER COUNTY
 STATE OF WEST VIRGINIA
 Office of Assessor

DISTRICT
DRY FORK
 SHEET NO: 330
 Date, Aerial Photography: November, 1961 Date, Map: Dec., 1962
 Photo No. Scale: 1" = 400'