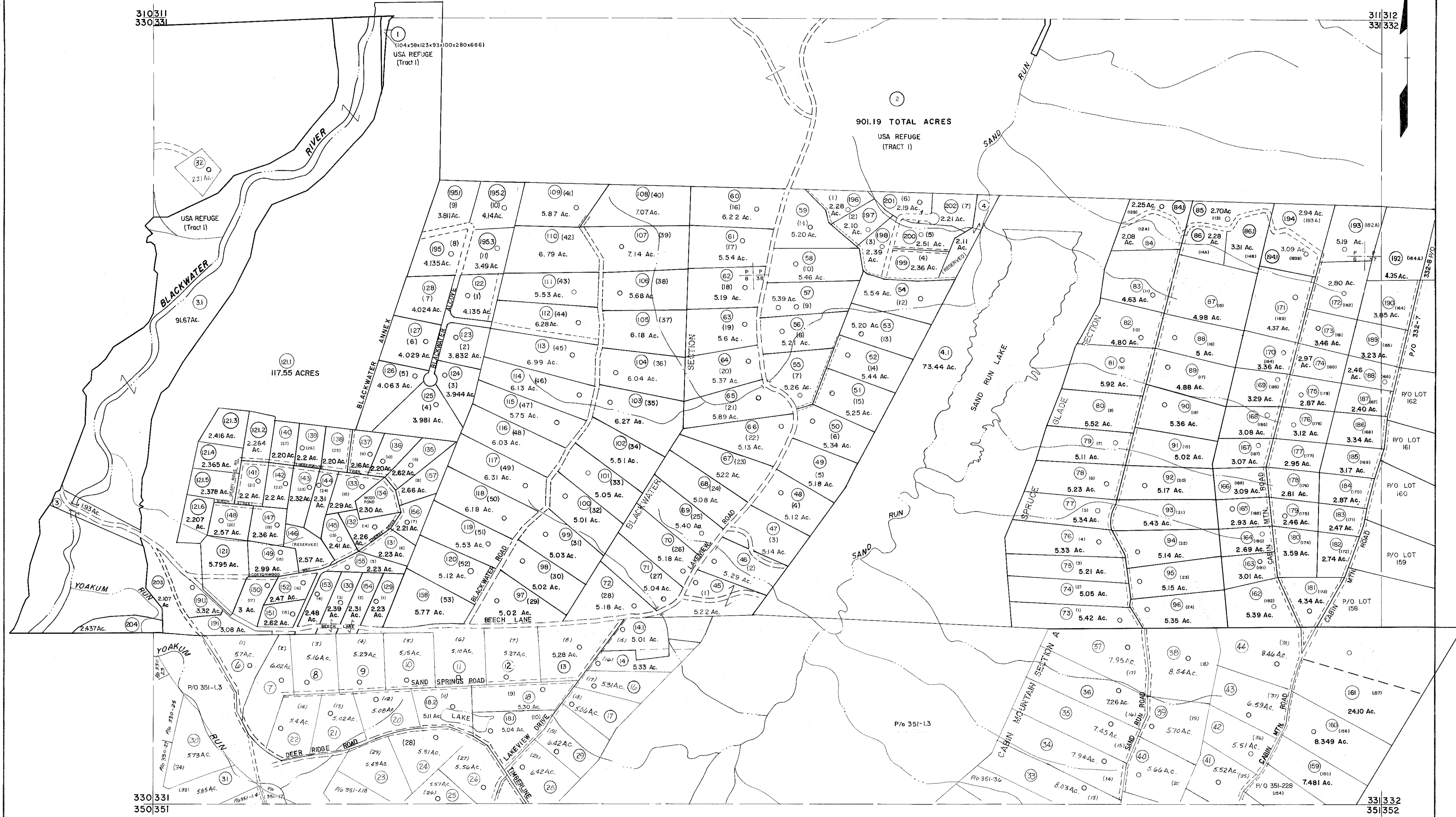


310311
330331

311312
331332



330331
350351

331332
351352

For Tax Purposes Only

Prepared by
MICHAEL BAKER, JR., INC.
Consulting Engineers
Rochester, Pennsylvania

Legend	
Property line	Original lot line
Edge of pavement or roadway	Dead lot number
Corporation line	Parcel or index number
District line	Improvement
County line	Railroad

Revisions	
1 11-20-78	9 OGIS 2-95 HD 17 ESI 2/12/02 REK
2 Revised to 7-1-85	10 O.G.I.S 4-1-96 J.E.B 18 ESI 2/20/03 REK
3 7-1-84 L.E.S. 11 SLS INC. - DDC 5/97	19 HBS 2/19/04
4 REV. TO 3-1-89 R.E.B 12 SLS INC. 3/3/98 J.W.M 20 3/21/05 S.B.H	
5 OGIS 1/5/91 DSH 13 SLS INC. 1/28/99 DSW 21 3/24/07 S.B.H	
6 OGIS 3-19-92 TL 14 SLS INC. 3/2/00 J.W.M 22 6-22-08 H & S	
7 OGIS 1/30/93 DSH 15 ESI 2/1/01 REK 23 5-4-13 H & S	
8 OGIS 12/12/93 SAU 16	24

KEY MAP

TUCKER COUNTY
STATE OF WEST VIRGINIA
Office of Assessor

DISTRICT
DRY FORK

SHEET NO: 331

Date, Aerial Photography: November, 1961 Date, Map: Dec. 1962
Photo No: Scale: 1" = 400'