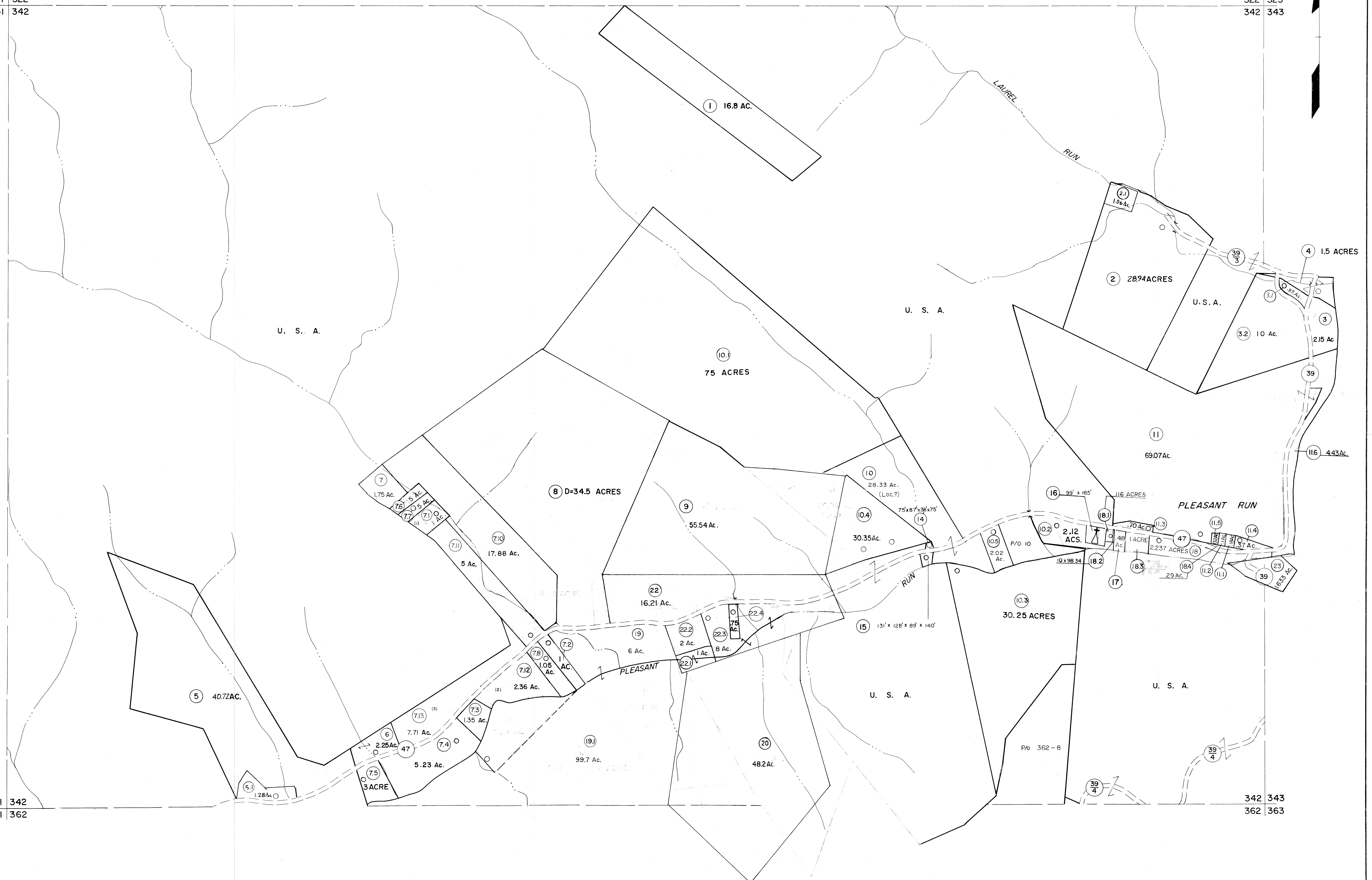


321 322
341 342

322 323
342 343

341 342
361 362

342 343
362 363



For Tax Purposes Only

Prepared by
MICHAEL BAKER, JR., INC.
Consulting Engineers
Rochester, Pennsylvania

Legend

Property line	—	Original lot line	- - - - -
Edge of pavement or roadway	—	Deed lot number	(15)
Corporation line	—	Parcel or index number	(16)
District line	—	Improvement	o
County line	—	Railroad	—+—

Revisions

1	6-4-75	T.B.	9	OGIS	1/31/93	DSH	17	ESI	2/1/01	REK
2	11-27-78	D.G.	10	OGIS	12/12/93	SAJ	18	ESI	2/12/02	REK
3	Revised to 7-1-88		11	OGIS	2-95	HD	19	ESI	2/20/03	REK
4	Revised to 7-1-87		12	O.G.I.S.	4-1-96	J.E.B.	20	H&S	2/19/04	
5	Revised to 7-1-87		13	SLS INC.	DDC	5/97	21			
6	Rev. to 3-1-89	REB	14	SLS INC.	3/3/98	JWM	22			
7	OGIS	3-19-92	15	SLS INC.	1/28/99	DSW	23			
8			16	SLS INC.	3/2/00	JWM	24			

KEY MAP



TUCKER COUNTY
STATE OF WEST VIRGINIA
Office of Assessor

DISTRICT

BLACKFORK

SHEET NO: 342

Date, Aerial Photography: November, 1961 Date, Map: Dec., 1962
Photo No: Scale: 1" = 400'