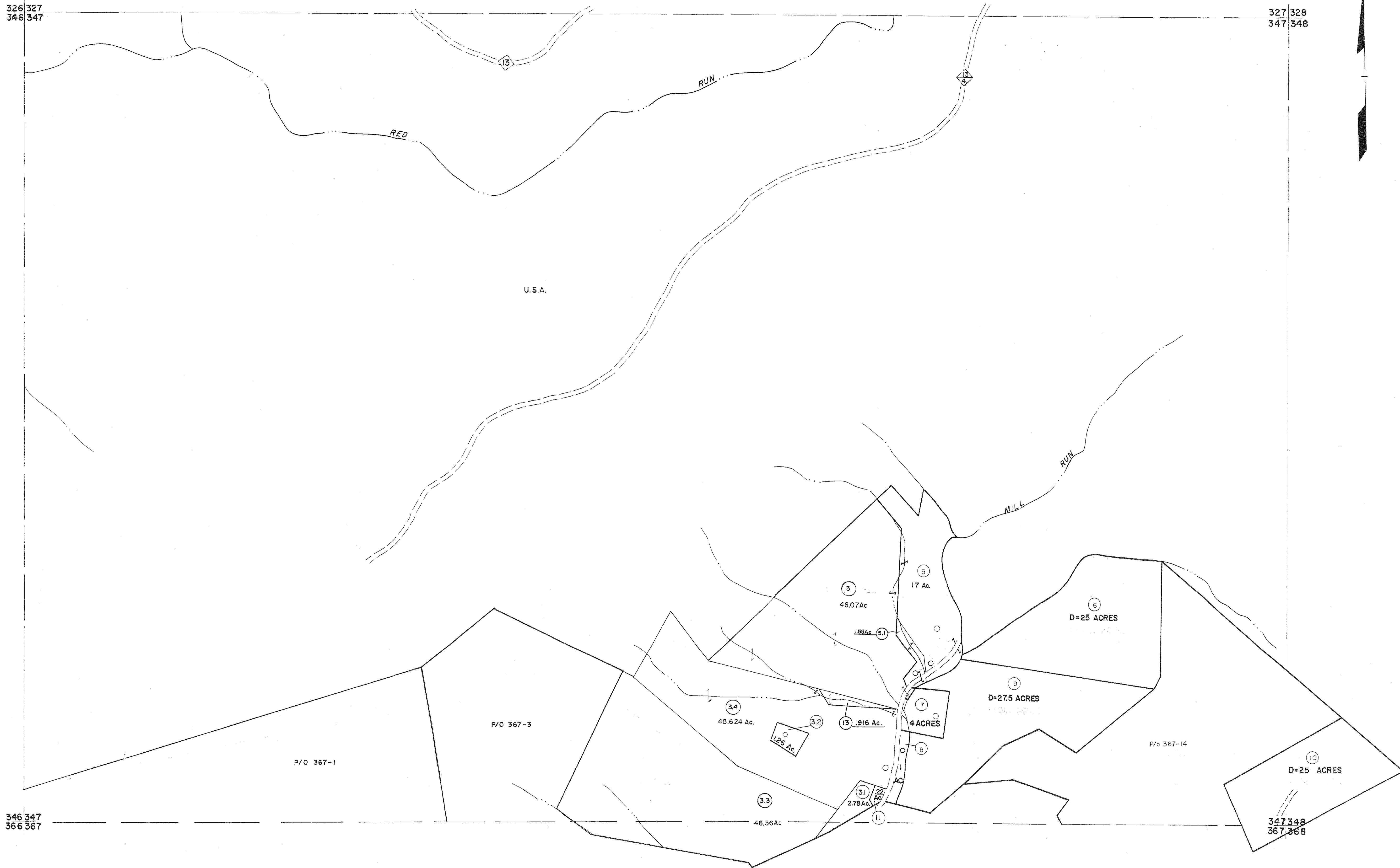


326 327
346 347

327 328
347 348



346 347
366 367

347 348
367 368

For Tax Purposes Only

Prepared by
MICHAEL BAKER, JR., INC.
Consulting Engineers
Rochester, Pennsylvania

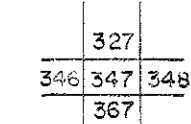
Legend

Property line	—	Original lot line	---
Edge of pavement or roadway	- - -	Deed lot number	(15)
Corporation line	- - - -	Parcel or index number	(3)
District line	- - - - -	Improvement	(O)
County line	- - - - -	Railroad	(R)

Revisions

No.	Description	Date	By
1	Revised to 7-1-88	6-21-09	H+S
2	7-1-84 L.E.S.	5-2-10	H+S
3	OGIS 1/5/91 DSH	6/24/11	S&H
4	OGIS 12/12/93 SAJ	5/25/15	S&H
5	SLS INC. 1/28/99 DSW		
6	ESI 2/1/01 REK		
7	ESI 2/20/03 REK		
8	2-22-08 H+S		

KEY MAP



TUCKER COUNTY
STATE OF WEST VIRGINIA
Office of Assessor

DISTRICT

DRY FORK

SHEET NO: 347

Date, Aerial Photography: November, 1961 Date, Map: Dec., 1962
Photo No. Scale: 1" = 400'