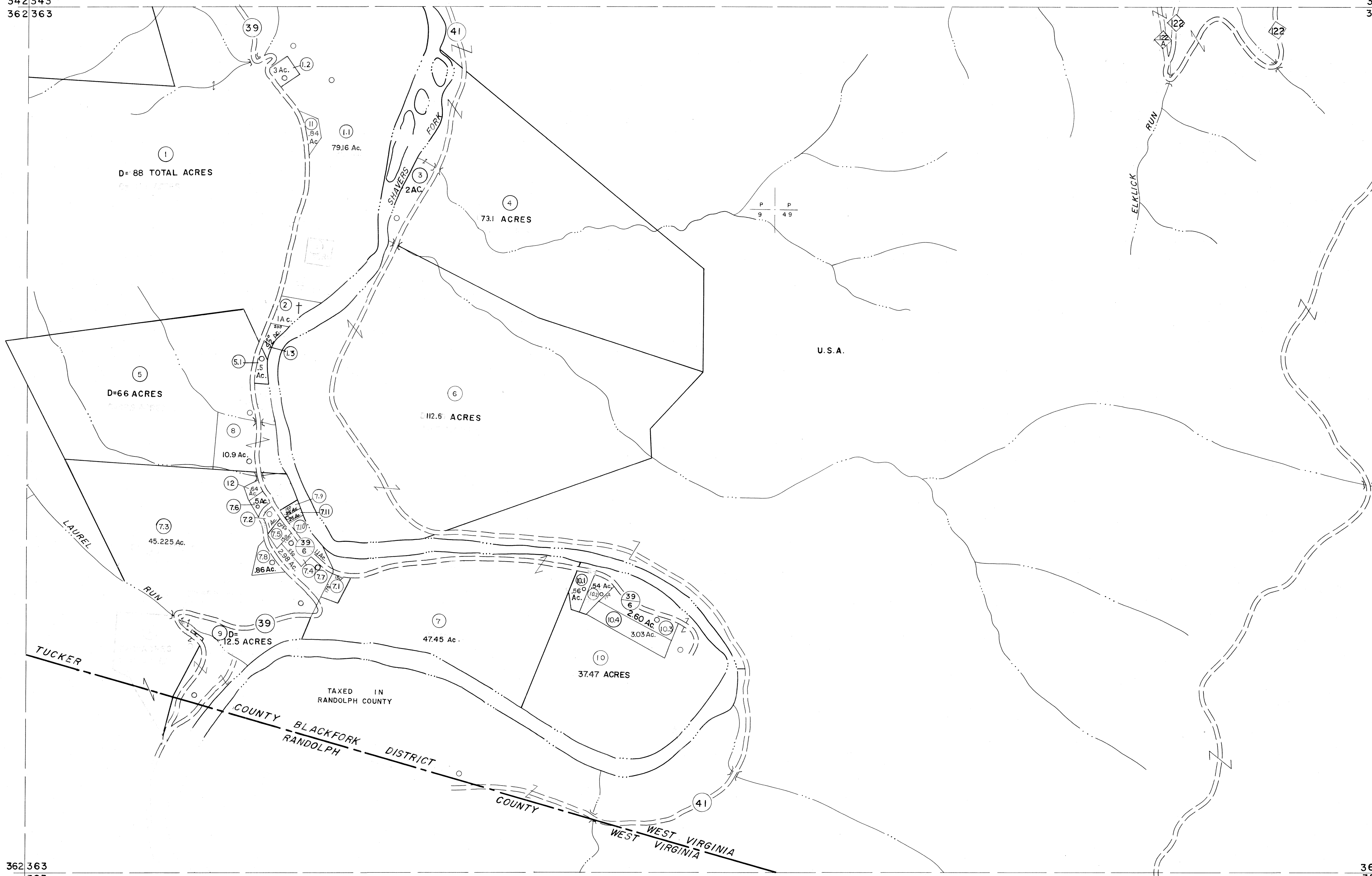


342343  
362363

343344  
363364



For Tax Purposes Only

Prepared by  
MICHAEL BAKER, JR., INC.  
Consulting Engineers  
Rochester, Pennsylvania

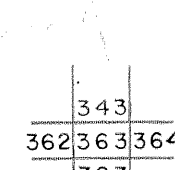
Legend

Property line	—	Original lot line	- - - - -
Edge of pavement or roadway	—	Deed lot number	(15)
Corporation line	—	Parcel or index number	(99)
District line	—	Improvement	○
County line	—	Railroad	—

Revisions

1	6-3-75	J.C.	9	OGIS	12/12/93	SAJ	17
2	11/22/78	D.G.	10	SLS INC.	- DDC 5/97	REK	18
3	Revised to 7-1-88		11	ESL	2/2/01	REK	19
4	7-1-84	L.E.S.	12	3/28/06		S&H	20
5	Revised to 7-1-87		13				21
6	Rev. to 3-1-89	R.E.B.	14				22
7	OGIS	1/6/91	DSH	15			23
8	OGIS	3-19-92	TL	16			24

KEY MAP



TUCKER COUNTY  
STATE OF WEST VIRGINIA  
Office of Assessor

DISTRICT

BLACKFORK

SHEET NO: 363

Date, Aerial Photography: November, 1961 Date, Map: Dec. 1962  
Photo No: Scale: 1" = 400'