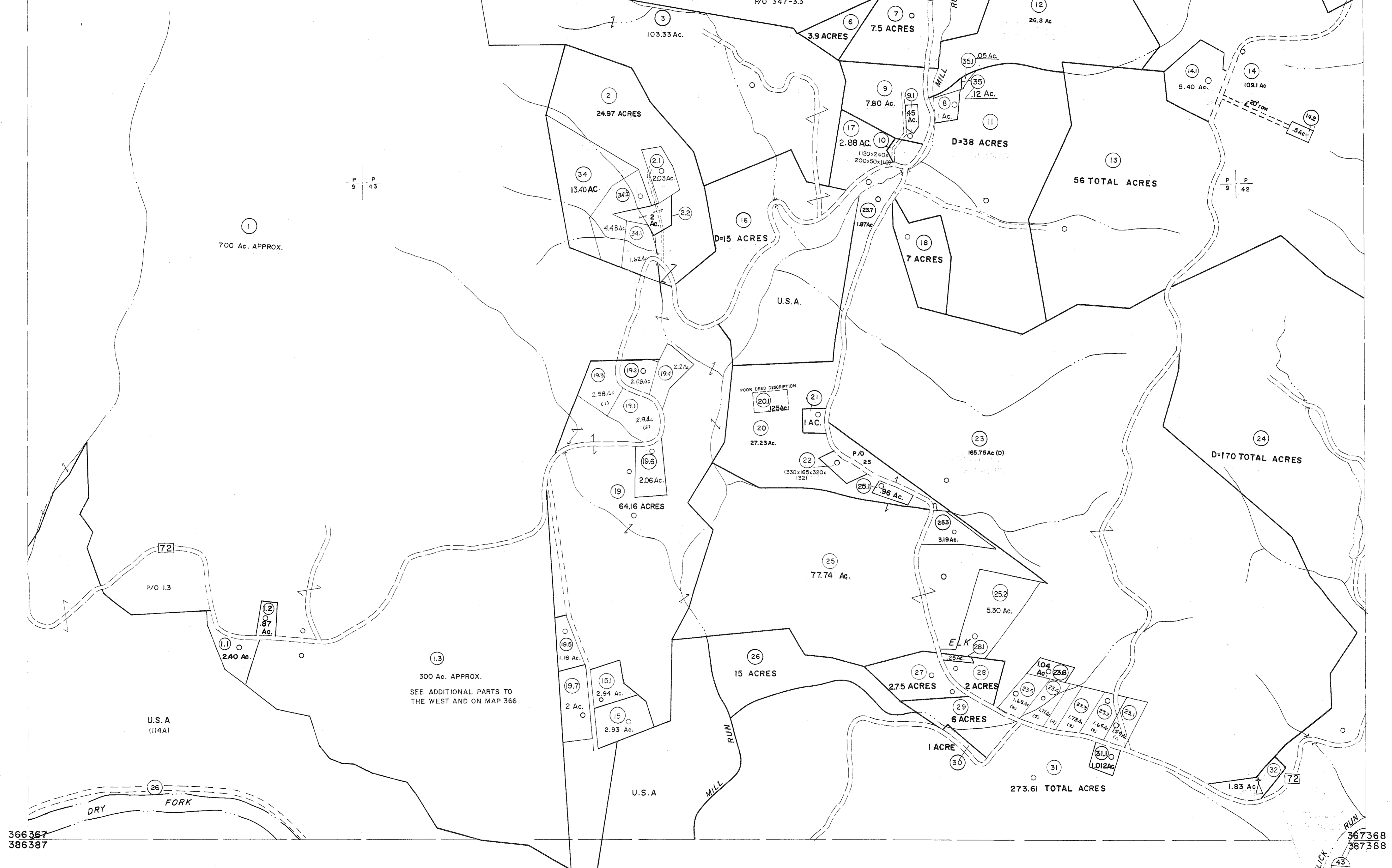


346347
366367

347348
367368



366367
386387

367368
387388

For Tax Purposes Only

Prepared by
MICHAEL BAKER, JR., INC.
Consulting Engineers
Rochester, Pennsylvania

Legend

| | | | |
|-----------------------------|---|------------------------|------|
| Property line | — | Original lot line | — |
| Edge of pavement or roadway | — | Deed lot number | (15) |
| Corporation line | — | Parcel or index number | (16) |
| District line | — | Improvement | — |
| County line | — | Railroad | — |

Revisions

| | | | | | | | | | |
|---|----------------|----|----------|---------------------|--------|----|-----|---------|--------|
| 1 | 6-8-69 | 9 | OGIS | 1/31/93 | DSH | 17 | ESI | 2/20/03 | REK |
| 2 | 11-22-78 | 10 | OGIS | 2-95 | HD | 18 | HBS | 2/19/04 | |
| 3 | Revised 7-1-89 | 11 | O.G.I.S. | 4-1-96 | J.E.B. | 19 | | 3/21/05 | S.B.H. |
| 4 | 7-1-84 | 12 | L.E.S. | | | 20 | | 6-22-08 | 4.5 |
| 5 | July, 1986 | 13 | TRL | SLS INC. - DDC 5/97 | | 21 | | 7/4/11 | S.B.H. |
| 6 | Rev. to 3-1-89 | 14 | RE.B. | SLS INC. 3/2/00 | J.W.M. | 22 | | 5/25/15 | S & H |
| 7 | OGIS | 15 | DSH | | | 23 | | | |
| 8 | | 16 | | | | 24 | | | |

KEY MAP

347
366367368
387

TUCKER COUNTY
STATE OF WEST VIRGINIA
Office of Assessor

DISTRICT
DRY FORK

SHEET NO: 367

Date, Aerial Photography: November, 1961 Date, Map: Dec. 1962
Photo No. Scale: 1"=400'